

Characterization of the *yehUT* Two-Component Regulatory System of *Salmonella enterica* Serovar Typhi and Typhimurium

Vanessa K. Wong^{1,2}, Derek J. Pickard¹, Lars Barquist^{1,3}, Karthikeyan Sivaraman^{3,4}, Andrew J. Page¹, Peter J. Hart⁵, Mark J. Arends^{2,6}, Kathryn E. Holt⁷, Leanne Kane¹, Lynda F. Mottram^{1,8}, Louise Ellison¹, Ruben Bautista¹, Chris J. McGee¹, Sally J. Kay¹, Thomas M. Wileman¹, Linda J. Kenney^{9,10}, Calman A. MacLennan^{5,8}, Robert A. Kingsley^{1*}, Gordon Dougan¹

1 Wellcome Trust Sanger Institute, Wellcome Trust Genome Campus, Hinxton, Cambridge, United Kingdom, **2** University of Cambridge Department of Pathology, Addenbrooke's Hospital, Cambridge, United Kingdom, **3** European Molecular Biology Laboratory, European Bioinformatics Institute (EMBL-EBI), Wellcome Trust Genome Campus, Hinxton, Cambridge, United Kingdom, **4** Positive Bioscience Ltd, Mumbai, India, **5** Medical Research Council Centre for Immune Regulation and Clinical Immunology Service, Institute of Biomedical Research, School of Immunity and Infection, College of Medicine and Dental Sciences, University of Birmingham, Birmingham, United Kingdom, **6** University of Edinburgh Division of Pathology, Edinburgh Cancer Research Centre, Institute of Genetics & Molecular Medicine, Western General Hospital, Edinburgh, United Kingdom, **7** The Department of Biochemistry and Molecular Biology and Bio21 Molecular Science and Biotechnology Institute, The University of Melbourne, Parkville, Australia, **8** Novartis Vaccines Institute for Global Health, Siena, Italy, **9** Mechanobiology Institute, National University of Singapore, T-Lab, Singapore, Singapore, **10** Department of Microbiology and Immunology (M/C 790), University of Illinois at Chicago, Chicago, Illinois, United States of America

Abstract

Proteins exhibiting hyper-variable sequences within a bacterial pathogen may be associated with host adaptation. Several lineages of the monophyletic pathogen *Salmonella enterica* serovar Typhi (*S. Typhi*) have accumulated non-synonymous mutations in the putative two-component regulatory system *yehUT*. Consequently we evaluated the function of *yehUT* in *S. Typhi* BRD948 and *S. Typhimurium* ST4/74. Transcriptome analysis identified the *cstA* gene, encoding a carbon starvation protein as the predominantly *yehUT* regulated gene in both these serovars. Deletion of *yehUT* had no detectable effect on the ability of these mutant *Salmonella* to invade cultured epithelial cells (*S. Typhi* and *S. Typhimurium*) or induce colitis in a murine model (*S. Typhimurium* only). Growth, metabolic and antimicrobial susceptibility tests identified no obvious influences of *yehUT* on these phenotypes.

Citation: Wong VK, Pickard DJ, Barquist L, Sivaraman K, Page AJ, et al. (2013) Characterization of the *yehUT* Two-Component Regulatory System of *Salmonella enterica* Serovar Typhi and Typhimurium. PLoS ONE 8(12): e84567. doi:10.1371/journal.pone.0084567

Editor: Axel Cloeckeaert, Institut National de la Recherche Agronomique, France

Received: September 12, 2013; **Accepted:** November 24, 2013; **Published:** December 30, 2013

Copyright: © 2013 Wong et al. This is an open-access article distributed under the terms of the Creative Commons Attribution License, which permits unrestricted use, distribution, and reproduction in any medium, provided the original author and source are credited.

Funding: Wellcome Trust (Grant no: 09805; <http://www.wellcome.ac.uk>). The funders had no role in study design, data collection and analysis, decision to publish, or preparation of the manuscript.

Competing interests: The authors declare the affiliations of three of the authors to commercial companies. Dr. Karthikeyan Sivaraman to Positive Bioscience Ltd, Mumbai, India, and Professor Calman A. MacLennan and Dr. Lynda F. Mottram to Novartis Vaccines Institute for Global Health, Siena, Italy. These affiliations do not alter the authors' adherence to all the PLOS ONE policies on sharing data and materials.

* E-mail: rak@sanger.ac.uk

Introduction

Enteric bacteria have evolved a complex lifestyle involving survival in a variety of niches, including the environment and the intestinal lumen of various animal species. Therefore bacteria must regulate global gene expression in response to their environment, gathering information in part through specialized two-component regulatory systems that sense environmental changes. These systems largely operate by exploiting signal-sensing domains on histidine kinase (HK) sensory proteins linked to cognate response regulators (RR) that can modulate gene expression [1]. The regulons

associated with many two-component systems have been defined and in some cases some of their environmental stimuli elucidated [2]. However, others remain poorly characterized.

Orthologues of the candidate two-component regulatory system *yehUT* are found in almost all enteric bacteria, including plant and animal pathogens [3]. Detectable autophosphorylation of YehU and phosphotransfer to YehT has been shown to occur in *Escherichia coli* [4]. In *E. coli*, *yehUT* regulates *yjiY*, a gene that encoded an inner membrane protein belonging to the carbon starvation protein superfamily. *yehUT* may be involved in the stationary phase control network as YjiY is strongly induced at the onset of this growth phase [3].

However, detailed phenotypic analysis of derivatives harboring mutations in the *yehUT* system identified no other obvious differences with otherwise isogenic wild type *E. coli* [3,5]. However, overexpression of *yehT* in *E. coli* conferred resistance to compounds such as crystal violet, deoxycholate [6], and beta-lactam antibiotics [7].

Salmonella enterica serovar Typhi (*S. Typhi*) is a human restricted enteric bacterial pathogen that causes typhoid [8]. *S. Typhi* is a monophyletic pathogen that likely crossed into the human population once thousands of years ago [9]. Thus, all *S. Typhi* have a common ancestor and genetic variation in this pathogen is limited and largely characterized by extensive loss of gene function in the form of pseudogene accumulation [10]. Pseudogenes are defined as genes that are potentially inactivated by mutations including nonsense single nucleotide polymorphisms (SNPs), frame-shifts and truncation by deletion or rearrangement [10-13]. Whole genome sequence of multiple *S. Typhi* isolates has revealed its remarkable clonal nature with very few non-synonymous SNPs [9,10]. However, Holt et al. [10] identified several genes containing more than six substitutions when compared to the *S. Typhi* CT18 genome, deviating from the expected Poisson distribution in terms of the accumulation of non-synonymous SNPs, and these proteins may therefore be under selection. In *S. Typhi*, the *yehUT* operon has accumulated relatively more non-synonymous mutations in a number of lineages of the phylogenetic tree compared to other genes, suggesting this operon is potentially undergoing adaptive evolution [9,10]. These observations stimulated us to conduct a more in depth investigation of the *yehUT* loci in an attempt to identify a phenotype in *Salmonella*.

Materials and Methods

Ethics

Ethical approval for the use of serum samples in this study was granted by the Life and Health Sciences Ethical Review Committee of the University of Birmingham, UK. Informed written consent was obtained from all participants.

For the mouse experiments wild type C57BL/6 mice 8-10 weeks of age were maintained according to UK Home Office Animals (Scientific Procedures) Act 1986 Amendment Regulations 2012 and the Code of Practice for the housing and care of animals used in scientific procedures. The protocols (Home Office Project licence number: 80/2596) were approved by the Animal Welfare and Ethical Review Body at the Wellcome Trust Sanger Institute. Surgery was performed under isoflurane anaesthesia to eliminate suffering.

Bacteria used for mutant construction

For safety reasons an attenuated derivative of *S. Typhi* Ty 2 (BRD948 Δ aroA, Δ aroC, Δ htrA) was used throughout as the parental isolate for the construction of mutant derivatives [14]. *S. Typhimurium* ST4/74, originally isolated from a calf with salmonellosis, was used as the parent strain for mutant derivative construction [15].

Informatics analyses

The domain architecture of YehU/YehT was analyzed using InterPro [16]. Transmembrane alpha helical segments were predicted with the TMHMM webserver [17]. The *yehUT* genes of *S. Typhi* Ty2 (Accession number AE014613) and *S. Typhimurium* SL1344 (Accession number FQ312003) were analyzed using the Genome browser Artemis [18]. The ST4/74 strain is the older designation of SL1344 [19]. The analysis required a completed genome sequence with annotation that is available for SL1344 (Accession number FQ312003), but not strictly for ST4/74. The amino acid sequences of YehU/YehT between *S. Typhi* Ty2 (Accession number AE014613) and *S. Typhimurium* SL1344 (Accession number FQ312003) were compared using ClustalW2 [20,21]. The YehU/YehT protein sequences were also compared with the two-component regulatory system of EnvZ/OmpR using ClustalW2 [20,21]. Non-synonymous SNPs in the *yehUT* genes of *S. Typhimurium* SL1344 (Accession number FQ312003) were identified by comparison to *S. Typhi* CT18 (Accession number: AL513382) using ClustalW2 [20,21].

Growth conditions

Experimental analysis determined that *yehU* was expressed during growth in minimal media, pH 7.0, with glucose or acetate as a carbon source (Accession number GSE2456). Therefore, for the SDS-PAGE and Western blot analysis *S. Typhi*, *S. Typhimurium* and their mutant derivatives were grown (where stated) in Luria-Bertani (LB) broth containing different salt concentrations (low salt, 0.09M NaCl; standard, 0.17M NaCl), in SPI-2 inducible conditions as described in [22], or in SPI-2 inducible conditions including either 0.5% glucose or 0.25% acetate [23]. Cultures were shaken at 37°C overnight and standardized to an OD600 of 1.0.

In all other experiments strains were grown in low salt LB broth. All *S. Typhi* cultures were supplemented with a mixture of aromatic amino acids (aro-mix; 4µg/ml phenylalanine, 4µg/ml tryptophan, 1µg/ml paraaminobenzoic acid and 1µg/ml dihydrobenzoic acid) and 4µg/ml tyrosine. Cultures were routinely shaken at 200rpm and incubated overnight at 37°C in a non-baffled flask. All mutant strains were grown with 30µg/ml kanamycin (Roche), 20µg/ml chloramphenicol (Sigma) or 30µg/ml ampicillin selection where appropriate.

Construction of the Δ yehUT mutant derivatives

The Δ yehUT mutant derivatives of *S. Typhi* BRD948 and *S. Typhimurium* ST4/74 were constructed using the λ red-recombinase system, described previously [24]. Bacteria were transformed with pSIM18 carrying the λ red-recombinase genes [25]. PCR amplification of the *cat* or *aph* genes using pKD3 or pKD4 (5ng/µl) respectively, with appropriate primers (Table S1 in File S1) that contain the priming sites GTGTAGGCTGGAGCTGCTTCG (forward) and CATATGAATATCCTCCTTAG (reverse), homologous to regions on the template plasmids. *S. Typhi* targeting primers were designed using the Ty2 genome sequence [26] and *S. Typhimurium* targeting primers were designed using the SL1344 genome sequence [27] as references (Table S1 in File S1). PCR conditions used were: 94°C for 2 min; 30 cycles of

94°C for 30s; 55°C for 30s; and 72°C for 2.5 min; final elongation 72°C for 7 min [24]. The PCR product (3-5ng) was transformed into *S. Typhi* pSIM18 and *S. Typhimurium* pSIM18, which had been grown in hygromycin broth to an OD₆₀₀ of 0.4 and induced to express λ red recombinase with heating to 42°C for 15 minutes. Mutant clones that were able to grow on the appropriate antibiotic selective media were cultured overnight at 37°C.

Phage P22 lysates for *S. Typhimurium* were made on the transformants and used to transfer the antibiotic resistance gene into a fresh *S. Typhimurium* strain background. Plasmid pSIM18 was cured from *S. Typhi* and single colonies that grew on LB with appropriate antibiotic but failed to grow on hygromycin agar were selected as mutant clones. The FRT (FLP recognition target)-flanked antibiotic resistance cassette was then eliminated with pCP20, as previously described [28]. Unless stated otherwise mutations constructed as part of this work were designed to minimize polar effects unless otherwise stated.

In *S. Typhimurium*, mutations in *yehUT* were complemented by co-transducing wild type *yehUT* gene with a closely linked *aph* gene that conferred kanamycin resistance to transductants, into the chromosome of *S. Typhimurium* Δ*yehUT*::*cat* using phage P22. Bacterial colonies that grew on LB with kanamycin and failed to grow on LB with chloramphenicol were selected. PCR was then carried out to confirm that we had directly replaced the *yehUT* deletion with an intact *yehUT* copy (Table S2 in File S1).

In *S. Typhi*, the wild type *yehUT* coding sequence was PCR-amplified using primers (Table S2 in File S1). This DNA fragment was then digested by restriction enzymes XbaI and KpnI and ligated to the low copy plasmid pWKS30 [29]. The resulting vector was introduced into the mutant *S. Typhi* Δ*yehUT*::*cat* by electroporation to produce the complement strain *S. Typhi* Δ*yehUT*::*cat* pWKS30:: *yehUT*::*aph*.

Construction of *yehT*::FLAG

A FLAG epitope tag peptide was added to the end of the *yehT* response regulator using a modification of the standard chromosomal gene disruption protocol [30]. A C-terminal FLAG translational fusion of *yehT* was constructed by PCR amplification of pSUB11 using primers gtaagccgtcgtctatctgaaaagtttaaagaggcgattggcctgGACTACAAA GACCATGACGG (forward) and ccttcggtcgtttctatgcaaaacgatattctaacagctctttaATATGAATATCC TCCTTAG (reverse) (Table S1 in File S1). This PCR product was transformed into *S. Typhi* BRD948 and *S. Typhimurium* ST4/74 containing pSIM18.

Western blotting

Cultured bacterial cells were centrifuged and resuspended in 300μl of sterile PBS and immediately mixed with 300μl of Laemmli 4X lysis buffer (5% SDS; 10% 2-mercaptoethanol; 40% glycerol; 0.005% bromophenol blue; 250mM 16:24 Tris HCl pH 6.8). Suspensions were heated at 100°C for 5 minutes. Extracted proteins were separated by SDS-PAGE and visualized by Coomassie-blue staining (Sigma) to ensure equal gel loading of proteins. Bacterial proteins resolved by SDS-

PAGE were transferred to a nitrocellulose membrane (Invitrogen) and detected with mouse anti-FLAG M2 monoclonal antibodies conjugated to horseradish peroxidase (HRP) (1:5000 (Sigma)), which were consequently bound to HRP-conjugated rabbit anti-mouse antibodies (1:5000 (Dako)). Detection was performed by chemiluminescence (Amersham ECL system, GE Healthcare)[30]. Proteins of the appropriate parental strain were used as a negative control (*S. Typhi* BRD948 or *S. Typhimurium* ST4/74) and *S. Typhimurium* SL1344 *fliA* FLAG was constructed as described for the *yehT*::FLAG and used as a positive control (27kDa).

DNA microarray analysis (Accession number GSE50825)

The mRNA transcriptional profiles of *S. Typhi* and *S. Typhimurium* and derivatives harboring Δ*yehU*, Δ*yehT* and Δ*yehUT* mutations were analyzed in at least three individual experiments. Overnight bacterial cultures grown in low salt LB shaking at 37°C were diluted to 1 in 100ml of LB broth and grown to an OD₆₀₀ of 0.3 (mid-log phase). Total RNA of ≈ 1X10⁹ cfu was extracted following treatment with 1mg/ml lysozyme for 5 minutes and purification using the RNeasy mini kit (Qiagen), following the manufacturer's instructions.

RNA quantity and quality was analyzed using the 2100 Bioanalyser (Agilent) and 25ng/μl of RNA was used to generate cDNA. This was labeled with a single-colored dye probe (Cy3) and hybridized to the appropriate custom microarrays (Agilent). The arrays were scanned using the DNA high-resolution microarray scanner (Agilent). The raw data was normalized by the RMA method [31] and differentially expressed genes were identified using the "Limma" Package in R (Bioconductor) [32]. Those genes with at least two-fold difference in expression and an adjusted p-value of <0.05 (using the Benjamini-Hochberg method) were considered to be differentially expressed.

qRT-PCR

Genes that were significantly differentially expressed in the DNA microarray experiments were tested using qRT-PCR. Using RNA extracted and purified in the different DNA microarray experiments, cDNA was synthesized using QuantiTect Reverse Transcription kit (Qiagen) with random primers, according to the manufacturer's instructions. PCR was conducted using 20ng/μl cDNA template in a 15μl reaction, with 0.5μM of each primer set (Table S3 and S4 in File S1) and Taq polymerase mix (Qiagen). PCR conditions used were: 95°C for 2 min; 40 cycles of 94°C for 15s; 60°C for 30s; 72°C for 30s; 95°C for 15s, 60°C for 1 min; and 95°C for 15s (Qiagen). The qRT-PCR was performed with a StepOne Plus machine (Applied Biosystems) using SYBR Green Dye (Qiagen). Fold change in gene expression was normalized to expression of the housekeeping gene *recA* using the delta-delta Ct method [33].

Invasion assay

Human laryngeal epithelial (HEp-2) cells were obtained from American Type Culture Collection (ATCC) 10801 University Boulevard Manassas, VA 20110, USA. The cells were maintained in DMEM-F12/L-Glut/FBS as described [34].

Bacteria for this invasion assay were first grown during the day by shaking in low salt LB at 220 rpm for 6 hours (at 37°C) followed by inoculating 0.5mls of this culture into 45mls fresh low salt LB in a 50ml falcon tube and left to grow statically overnight at 37°C [35]. Confluent monolayers of HEp-2 cells were inoculated at a dose of 10^6 cfu of bacteria. Infected monolayers were then incubated for 1 hour in a tissue culture incubator at 37°C, washed twice with Phosphate Buffer Saline (PBS), and then overlaid with tissue culture medium supplemented with 100µg/ml gentamicin. After 90 minutes, the cell culture was washed three times with PBS and lysed with 1% Triton X-100 in PBS to release intracellular bacteria. An aliquot of this suspension was used to determine the number of intracellular bacteria by plating serial dilutions onto LB agar plates. The bacterial counts of the control strains were compared with their respective $\Delta yehUT$ mutant derivatives.

Vi phage assay

S. Typhi BRD948 and its mutant derivative *S. Typhi* $\Delta yehUT$ were tested for sensitivity (plaque morphology) and susceptibility (bacterial counts) to Vi phage types II and VII [36]. The strains were grown in 3ml of LB left shaking overnight at 37°C. Molten 0.35% L-agar was cooled to 42°C, and 3ml aliquots were added to Falcon tubes containing 10µl of dilutions of Vi phage type II or VII (from 10^{-1} to 10^{-7}) and 150µl of the bacterial culture; the mixtures were poured immediately onto L-agar plates. The plates were left overnight at 37°C. The next day plaque morphology and count was compared.

Serum bactericidal assays with human sera

Killing of *S. Typhi*, *S. Typhi* $\Delta yehUT$, and *S. Typhi* $\Delta yehUT::cat$ pWKS30::yehUT::aph and *S. Typhimurium*, *S. Typhimurium* $\Delta yehUT$ and *S. Typhimurium* $\Delta yehUT::cat$ yehUT::aph with fresh, human serum were assessed as previously described [37]. Bacteria in log growth at a concentration of 1×10^7 cfu/ml were added at a 1:10 dilution to 100% human serum to give a final concentration of 1×10^6 cfu/ml and incubated at 37°C for 180 min on a rocker plate at 20rpm. Sera heat-inactivated at 56°C for 30 min were used as a control. Samples were taken at 45, 90 and 180-minute intervals. The concentration of *Salmonella* was determined by serial dilutions and plating on LB agar.

Mouse experiments

Acute infection mouse model. Mixed competitive inhibition experiments was performed using groups of ten isoflurane-anaesthetized wild type C57BL/6 mice, which were orally inoculated, with 10^8 cfu of mixed culture of *S. Typhimurium* $\Delta phoN::aph$ and *S. Typhimurium* $\Delta yehUT::cat$ in 200µl of sterile PBS. The *phoN* gene is dispensable for the intestinal and systemic phases of murine salmonellosis [38]. Therefore it was deemed an appropriate chromosomal insertion site for the *aph* gene required to distinguish the control *S. Typhimurium* from the mutant derivatives [39,40]. All mice were weighed daily and monitored for signs of illness. For bacterial quantification tissue from the mesenteric lymph nodes (MLN), cecum, ileum, spleen and liver from the mice were collected on day 5-post infection and homogenized in 5ml of sterile PBS. Viable bacteria in the

tissues were quantified by serial dilutions and plating onto LB agar containing the appropriate antibiotics to select for the *Salmonella*. Statistical tests were performed by the Wilcoxon signed-ranked test using Prism software (GraphPad Software Inc.) on the mixed competitive inhibition data. Differences between data sets where $p < 0.05$ were considered statistically significant.

Streptomycin-pretreated colitis mouse model. A streptomycin experiment was performed using three groups of five mice. Mice were pre-treated with 50mg of streptomycin in 200µl of sterile water 24 hours prior to infection [41]. One group of five mice were naïve and the other two groups of five mice were anaesthetized using isoflurane and orally inoculated with 10^3 cfu of either *S. Typhimurium* $\Delta phoN::aph$ or *S. Typhimurium* $\Delta yehUT::cat$, in 200µl of sterile PBS. All mice were weighed daily and monitored for signs of illness. All mice were culled on Day 3 of infection or mice exceeding 20% total weight loss were culled prior to Day 3 in accordance with UK Home Office guidelines. The ceca of the mice were collected, weighed and homogenized in 5ml of sterile PBS for bacterial quantification, qRT-PCR of inflammatory cytokines and pathological examination. Statistical analyses were performed on the data. Bacterial quantification in which viable bacteria was quantified by serial dilutions on LB agar containing the appropriate antibiotics to select for the *Salmonella*.

qRT-PCR of inflammatory cytokines: RNA was isolated from 3mm-long cecal sections using RNeasy Mini kit (Qiagen) according to manufacturer's instruction. RNA integrity and quantity were then assessed using Agilent 2100 Bioanalyzer (Agilent Technologies). cDNA was then synthesized using QuantiTect Reverse Transcription kit (Qiagen) with random primers, according to the manufacturer's instructions. All TaqMan qRT-PCR primers and probes were designed by Primer Express 3.0 (Applied Biosystems) to span exon-exon junction to avoid genomic DNA amplification. PCR was conducted using 5ng/µl cDNA template in a 25µl reaction, with 20µM of each cytokine primer set (Table S5 in File S1) and 10µM appropriate probe, according to manufacturer's instructions (Thermo Scientific). The *Gapdh* gene was used as the endogenous control. The qRT-PCR was performed with a StepOne Plus machine (Applied Biosystems) using Absolute Blue qRT-PCR Rox mix (Thermo Scientific). Relative gene expression was determined by normalization to *Gapdh* copy numbers [42].

Histopathology: To evaluate intestinal inflammatory disease histopathology, we fixed cecal segments in 4% paraformaldehyde and stained 5 µm-thick paraffin sections in hematoxylin and eosin according to standard protocols. Scoring of intestinal inflammation was performed in a blinded manner by a clinical consultant histopathologist with comparative pathology expertise, as follows: submucosal edema: mild-1, moderate-2, severe-3; submucosal cellular inflammation: mild-1, moderate-2, severe-3; mucosal cellular inflammation: mild-1, moderate-2, severe-3; crypt abscesses: absent-0, present (occasional/mild)-1, present (moderate/severe)-2; mucosal ulceration: absent-0, present (focal/mild)-1, present (moderate/severe)-2.

Statistical Analyses: Statistical tests were performed using the Mann-Whitney U test using U test (<http://elegans.som.vcu.edu/~leon/stats/utest.cgi>) on the data. Differences between data sets where $p < 0.05$ were considered statistically significant.

Phenotyping microarrays (BIOLOG)

Phenotype microarrays (PM) of metabolism of carbon sources (PM 1 to 2), nitrogen sources (PM 3), phosphorus and sulfur sources (PM 4), biosynthetic pathway substrates (PM 5), and peptide nitrogen sources (PM 6 to 8), osmotic/ionic response (PM 9), pH response (PM 10) and bacterial chemical sensitivity (PM 11 to 20) were performed according to manufacturer's instructions. (Biolog Inc. Hayward, California, USA) [43]. *S. Typhi* BRD948 and *S. Typhimurium* ST4/74 were used as reference strains for comparison with their respective $\Delta yehUT$ mutants (*S. Typhi* $\Delta yehUT$ and *S. Typhimurium* $\Delta yehUT$). PM micro titer plates were incubated at 37°C for 24 hours in the Omnilog (Biolog Inc.) and each well monitored for redox indicator change representing kinetic respiration. Tests were performed in triplicate and the kinetic data analyzed using Omnilog PM software (Biolog Inc.). Data was exported from the Biolog File Manager, and further analysis was conducted in R. Data was transformed in to "signal values" [44], and the Bioconductor package Limma [32] was used to test for differences in dye reduction. Benjamini-Hochberg corrected p -values were used to determine statistical significance, controlling for a false discovery rate of 5%.

Minimum inhibitory concentrations (MICs) of the $\Delta yehUT$ mutants of *S. Typhi* and *S. Typhimurium* were determined using Epsilometer test (E test) strips against antibiotics amoxicillin, tetracycline, ciprofloxacin, ceftriaxone, and meropenem (Oxoid, Hampshire, UK), trimethoprim-sulfamethoxazole and azithromycin (BioMérieux, SA, Marcy-L'Etoile, France). Semi-confluent growth was achieved using 0.5 McFarland organism bacterial suspensions [45] on Iso-Sensitest agar (Oxoid, Hampshire, UK) after 24 hours incubation aerobically at 37°C. Since the mutant strains were not clinical isolates parental strains were used as the controls to see if the deletion of *yehUT* had an effect on antibiotic susceptibility.

Results

Informatics analysis of the YehUT system

In *S. Typhi* Ty2 the *yehU* and the *yehT* genes are encoded on a 2,349 bp long fragment with a 4 bp overlap between the *yehU* and *yehT* open reading frames and are likely part of an operon. Neighboring genes include *yehV*, *yehW*, and *yehX* upstream of *yehU*, and *yehS* and *yehR* downstream from *yehT*. The genes *yehX*, *yehW*, *yehU*, *yehT* and *yehS* are located on the forward strand, whilst *t0694*, *yehV*, *t0699* and *yehR* lie on the reverse strand (Figure 1) [26,46]. The function of these genes is not currently known, although our sequence comparison-using Interpro indicated that *yehV* and *yehS* encode a putative transcriptional regulator and a conserved hypothetical protein, respectively [16].

The domain architecture of YehU and YehT was predicted from a consensus definition from Interpro [16]. These results predicted four domains in YehU (sensor, GAF, histidine phosphotransfer (DHp) and kinase domains) and two in YehT, (receiver and cell envelope-related transcriptional attenuator (LytR) domains) (Figure 1). The sensor domain is predicted to contain at least 5 transmembrane helices [17]. GAF domains are so-called because they are found in cGMP-specific phosphodiesterases, adenylyl cyclases and transcriptional activators, including formate hydrogen lyase system activators (FhIA), and although their precise function is not clear they may be involved in ligand binding and protein-protein interaction [47]. The LytTR domain named after the *Bacillus subtilis* LytT and *Staphylococcus aureus* LytR response regulators contains a specific DNA-binding motif and is commonly found in a number of bacterial transcriptional regulators [48]. The YehU/YehT system was compared to EnvZ/OmpR and revealed that YehU does not have a histidine residue at position 243 as in the sensor kinase EnvZ [49].

YehT expression in different media

In order to study the function of the YehUT system we initially determined the optimal conditions in which the YehT protein of *S. Typhi* and *S. Typhimurium* was expressed. To this end a *S. Typhi* and *S. Typhimurium* derivative was constructed that directed the expression of a YehT fusion protein fused at the C-terminal with the epitope-tag FLAG. Whole protein preparations from these derivatives cultured in five alternative media indicated that YehT was expressed in all conditions. In *S. Typhi*, YehT was expressed at relatively higher level in low salt LB (0.09M NaCl) than standard LB (0.17M NaCl). In a further experiment, expression was also slightly higher in a minimal medium designed to induce SPI-2, compared to the same medium additionally containing either glucose or acetate (Figure 2). However, in *S. Typhimurium* the overall level of expression of YehT was relatively low in all five culture media (Figure 3). Therefore, low salt LB was selected as the best growth media for determination of *yehUT* dependent transcription analysis and elucidation of the phenotype of $\Delta yehUT$ for both *S. Typhi* and *S. Typhimurium*.

Identification of *yehUT* regulated genes

In order to elucidate the role of *yehUT* on global gene expression, we performed transcriptome profiling based on microarray analysis of mRNA purified from *S. Typhi* and otherwise isogenic mutant derivatives harboring non-polar deletions of *yehUT* or either one of these two genes. *S. Typhi* and all mutant derivatives, including $\Delta yehUT$ *S. Typhi* grew at comparable rates (data not shown). Analysis of differentially expressed genes relative to the average expression level of each gene across all arrays was performed and genes that showed a statistically significant change in expression in mutant compared to *S. Typhi* control strain were identified (Accession number GSE50825) [32]. The differentially expressed genes were grouped into functional classes based on genome annotation [50]. Transcriptome analysis of the *S. Typhi* transcriptome compared to the $\Delta yehU$, $\Delta yehT$ and $\Delta yehUT$ mutant derivatives provided evidence of relative down

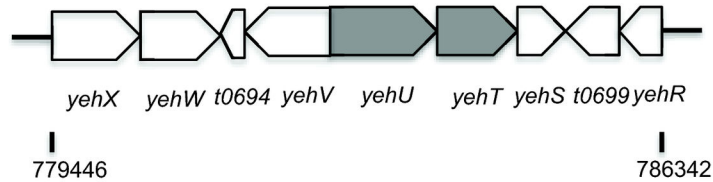
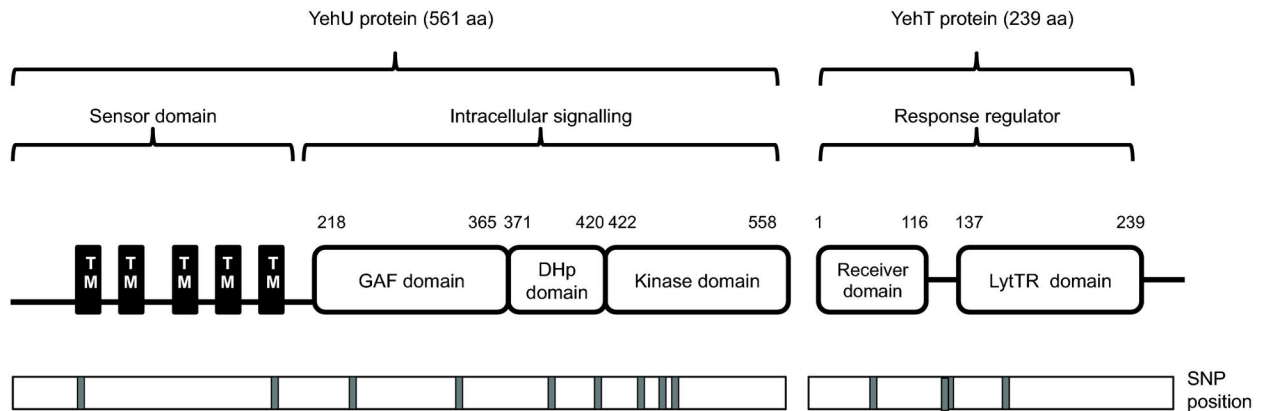
A**B**

Figure 1. A The *yehUT* operon with surrounding genes. The operon is 2349bp in length and located between 782210 to 784611 bp in *S. Typhi* Ty2 (Accession number AE014613) and between c2251460 to c253861 bp in *S. Typhimurium* SL1344 (Accession number FQ312003). The surrounding genes include *yehV*, *t0694*, *yehW*, *yehX* (upstream of *yehU*) and *yehS*, *t0699* and *yehR* (downstream from *yehT*). **B The domain organisation of the YehU and YehT proteins.** YehU protein comprises of five transmembrane (TM) alpha helical segments predicted using TMHMM webserver [17]. The intracellular signalling component consists of a GAF domain, a DHP (dimerization/histidine-containing phosphotransfer) domain that is connected to an ATP (adenosine triphosphate)-dependent Kinase domain. YehT protein consists of a Receiver domain and a LytR-homologous DNA binding domain [16]. The phosphorylation sites are indicated (H, Histidine; D, Aspartate). The SNP positions identified in *yehU* and *yehT* genes are indicated below the proteins by grey boxes [10].

doi: 10.1371/journal.pone.0084567.g001

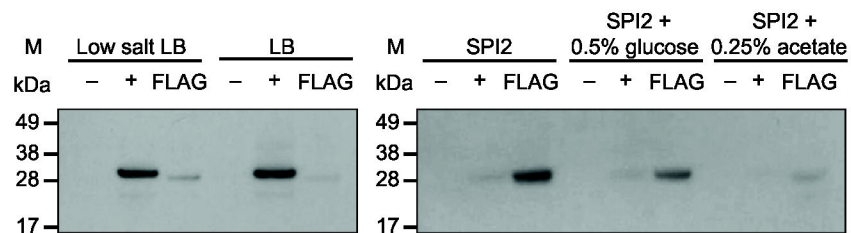


Figure 2. SDS-PAGE and western blot analysis of epitope-tagged YehT protein from *S. Typhi* BRD948.

Proteins from whole cell bacterial lysates were transferred after electrophoretic separation in a 12% SDS-PAGE gel (Invitrogen) onto a nitrocellulose membrane (Invitrogen) and probed with anti-FLAG M2 monoclonal antibodies (Sigma). Lanes: (M) protein molecular weight markers (SeeBlue Plus2 Pre-stained standard; Invitrogen); (-) proteins extracted from *S. Typhi* BRD948 (negative control); (+) proteins extracted from *S. Typhimurium* SL1344 Δ *fliA* (positive control, 27.4kDa); FLAG proteins extracted from *S. Typhi* Δ *yehT*-tagged (27.4kDa). Bacteria was grown in low salt LB; normal salt LB; SPI-2 inducing; SPI-2 + 0.5% glucose; SPI-2 + 0.25% acetate overnight, shaking at 37°C.

doi: 10.1371/journal.pone.0084567.g002

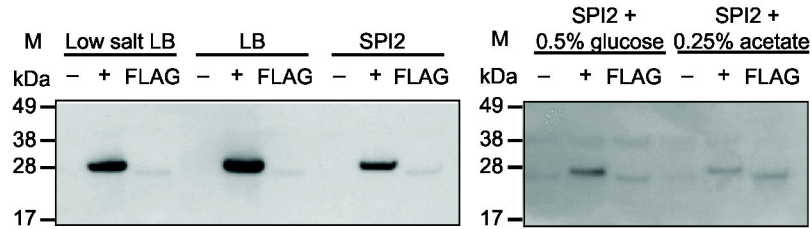


Figure 3. SDS-PAGE and western blot analysis of epitope-tagged YehT protein from *S. Typhimurium* ST4/74.

Proteins from whole cell bacterial lysates were transferred after electrophoretic separation in a 12% SDS-PAGE gel (Invitrogen) onto a nitrocellulose membrane (Invitrogen) and probed with anti-FLAG M2 monoclonal antibodies (Sigma). Lanes: (M) protein molecular weight markers (SeeBlue Plus2 Pre-stained standard; Invitrogen); (-) proteins extracted from *S. Typhimurium* ST4/74 (negative control); (+) proteins extracted from *S. Typhimurium* SL1344 Δ *fliA* (positive control; 27.4kDa); FLAG proteins extracted from *S. Typhimurium* Δ *yehT*-tagged (27.4kDa). Bacteria was grown in low salt LB; normal salt LB; SPI-2 inducing; SPI-2 + 0.5% glucose; SPI-2 + 0.25% acetate overnight, shaking at 37°C.

doi: 10.1371/journal.pone.0084567.g003

regulation in each of the mutants of three genes: *cstA1* (*t4582*), encoding a carbon starvation protein, and *t4581* and *t4580* annotated as conserved hypotheticals (Table 1).

The *cstA1* gene was the most differentially expressed in all mutant derivatives compared to *S. Typhi*. This gene is located in the same chromosomal region as *t4581* and *t4580* on the reverse strand of the *S. Typhi* Ty2 genome: *cstA1* (*t4582*) is situated at c4734842 bp to c4736992 bp, with *t4581* 95 bp and *t4580* 309 bp downstream, respectively [18]. Previous RNA-sequencing data has shown that these genes are transcribed *in vitro* at 37°C during mid-log phase [51]. The *cstA1* gene was identified as a putative carbon starvation protein using the NCBI database [52,53]. Furthermore, the gene is predicted to encode a membrane protein involved in peptide utilization to avoid carbon starvation as the bacterium enters stationary phase [54]. This protein appears to be conserved in the *Enterobacteriaceae*, including *Salmonella* species [54]. *cstA* has been described as a cAMP-CRP (cyclic adenosine monophosphate-catabolite regulation protein) dependent gene in *E. coli* when the concentration of cAMP rises during carbon starvation activating the gene [55].

Both NCBI and Pfam databases identified *t4581* as encoding a hypothetical protein of unknown function, although structural modeling suggested a domain that might bind nucleic acids [52-54]. Gene *t4580* is predicted to encode a putative GTP-binding protein (YjiA), using NCBI [52,53]. In *E. coli* the crystal structure supports a GTP-dependent function, but the biological role of the protein remains unclear [56].

Transcriptome analysis of the *S. Typhi* Δ *yehUT* mutant displayed not only dysregulation of *cstA1*, *t4580* and *t4581*, but also an additional 12 genes: ten genes were down regulated and two up regulated (Table 1). These genes were not differentially expressed in either of the single mutants. There was relative down regulation of a number of *Salmonella* Pathogenicity Island (SPI) associated genes, including *spaM*, *spaN*, and *spaI* located on SPI-1, *pipB* situated in SPI-5, and the SPI-7 encoded gene *sopE* [57]. Other down regulated genes included *t4221*, a member of the AraC family transcriptional regulator family and *t4220*, a GerE family regulatory protein. Metabolic genes relatively down regulated in

the *S. Typhi* Δ *yehUT* mutant included *ppc*, which encodes phosphoenolpyruvate carboxylase, an enzyme involved in the oxidation of carbohydrates via the tricarboxylic acid cycle [58] and *yjiD*, a galactoside O-acetyltransferase, which in *E. coli* may assist cellular detoxification by acetylating non-metabolizable pyranosides and thereby preventing their reentry into the cell [59]. The two genes that were up regulated in the double mutant were the *nth* gene, which encodes endonuclease III involved in the DNA repair system [60,61] and *t1038*, which encodes an unknown hypothetical protein.

The differential expression of several genes, including *cstA1*, *t4581*, *t4580*, *spaM*, *spaN*, *spaI* and *sopE*, were validated using qRT-PCR. The overall pattern of up and down regulation of genes was identical to the microarray results (Table S6 in File S1; Figure 4a). Complementation of the Δ *yehUT* mutant with plasmid-encoded *yehUT* restored expression of the genes, although many of the genes were then relatively over-expressed, which is most likely a result of the high copy number of plasmids containing *yehUT* (Table S6 in File S1; Figure 4b).

Phenotypic analysis of the *yehUT* deletion mutant derivatives of *S. Typhi*

S. Typhi BRD948 and its Δ *yehUT* mutant derivative were phenotypically analyzed using serum bactericidal assays (Graph B in Figure S1), tissue invasion assays with Hep2 cells (Graph A in Figure S2), and a Vi phage sensitivity assay (Figure S3), but no significant differences were observed. There was no metabolic phenotype identified for *S. Typhi* Δ *yehUT* using phenotypic Biolog microarrays, which monitors a range of different growth conditions, including various substrates, ionic concentrations (pHs) and osmolarities. Furthermore, no difference in MIC was observed between *S. Typhi* and the Δ *yehUT* mutant derivative when tested against a range of antibiotics commonly used to treat *Salmonella* infections, including amoxicillin, ceftriaxone, ciprofloxacin, trimethoprim-sulfamethaxole, meropenem and azithromycin.

Table 1. DNA microarray analysis of *S. Typhi* Δ yehUT compared to *S. Typhi* BRD948, grown in low salt LB at mid-log phase.

Genes	Gene ID	Putative identification Dof NCBI database	Functional category	Log ₂ fold change (FC)	Adjusted p-value
<i>yehU</i> mutant					
<i>cstA1</i>	t4582	carbon starvation protein	I	-6.517056711	4.24E-07
-	t4581	hypothetical protein t4581	III	-3.984595019	3.42E-04
-	t4580	GTP-binding protein YjiA	III	-2.282197911	4.17E-02
<i>yehT</i> mutant					
<i>cstA1</i>	t4582	carbon starvation protein	I	-6.36E+00	5.44E-07
-	t4581	hypothetical protein t4581	III	-3.91E+00	4.12E-04
-	t4580	GTP-binding protein YjiA	III	-2.41E+00	3.50E-02
<i>yehUT</i> mutant					
<i>cstA1</i>	t4582	carbon starvation protein	I	-6.47E+00	4.56E-07
-	t4581	hypothetical protein t4581	III	-3.68E+00	4.95E-04
-	t4221	AraC family transcriptional regulator	V	-1.94E+00	1.45E-02
-	t4220	GerE family regulatory protein	V	-1.55E+00	1.62E-02
<i>spaM</i>	t2795	virulence-associated secretory protein	I	-1.52E+00	1.62E-02
-	t4580	GTP-binding protein YjiA	III	-2.32E+00	2.04E-02
<i>spaN</i>	t2794	antigen presentation protein SpaN	I	-1.57E+00	2.23E-02
<i>spaI</i>	t2796	ATP synthase SpaI	I	-1.46E+00	2.23E-02
<i>pipB</i>	t1830	hypothetical protein t1830	I	-1.54E+00	2.61E-02
-	t1038	hypothetical protein t1038	II	1.03E+00	4.21E-02
<i>yjiD</i>	t3592	Acetyltransferase	IV	-8.89E-01	4.21E-02
<i>ppc</i>	t3505	phosphoenolpyruvate carboxylase	VII	-1.25E+00	4.21E-02
<i>Nth</i>	t1321	endonuclease III	VI	1.26E+00	4.21E-02
-	t3408	hypothetical protein t3408	VIII	-9.93E-01	4.60E-02
<i>sopE</i>	t4303	invasion-associated secreted protein	VIII	-1.92E+00	4.96E-02

Properties of a *yehUT* deletion mutant derivative of *S. Typhimurium*

The two-component regulatory system *yehUT* is also present in *S. Typhimurium* which allowed us to use this serovar for a comparison against *S. Typhi* and as a surrogate *in vivo* model of typhoid fever. Informatics analysis of the *S. Typhimurium* SL1344 genome identified one non-synonymous SNP in *yehT*

Table 1 (continued).

Differential expression profiles were represented by a log₂ fold change (FC) value – a positive value indicates the gene is up regulated in the mutant strain compared to *S. Typhi*; a negative value indicates the gene is down regulated in the mutant strain compared to . Key genes identified based on an adjusted p-value of <0.05 using the Benjamini-Hochberg method [32]. Gene annotation was performed using the *S. Typhi* Ty2 database at NCBI (<http://www.ncbi.nlm.nih.gov/>; Accession number AE014613). Functional categories as annotated in the *S. Typhi* CT18 genome (Accession number AL513382) Code: I – pathogenicity/adaptation; II – hypothetical (unknown function); III – conserved hypothetical; IV – central/intermediary metabolism; V – regulators; cyan VI – degradation of macromolecules; VII energy metabolism; VIII – phage-related functions/IS elements.

doi: 10.1371/journal.pone.0084567.t001

and four non-synonymous SNPs in *yehU* compared to *S. Typhi* CT18 (Table S7 in File S1) [18]. The consensus encoded polypeptides are almost identical in both serovars with only four amino acid differences in YehU and two amino acid difference in YehT identified between *S. Typhi* Ty2 and *S. Typhimurium* SL1344, with no difference observed between predicted protein structures [20,21,54].

Transcriptome analysis of mRNA prepared from *S. Typhimurium* and the *yehUT* mutant derivatives, provided evidence for the comparative down regulation of the same four genes identified in similar experiments with *S. Typhi*: *cstA1* (SL1344_4463), *cstA2* (SL1344_0588) and hypothetical proteins SL1344_4462 and SL1344_SPAB_05703 (Accession number GSE50825) (Table 2). Three out of the four genes (*cstA1*, SL1344_4462 and SL1344_SPAB_05703) were confirmed by qRT-PCR to be relatively down regulated in the Δ yehUT mutant (Table S6 in File S1; Figure 5a). Expression of these genes was restored by complementation of the Δ yehUT mutant (Table S6 in File S1; Figure 5b). On further analysis these genes are found in the same region in the genome with the *cstA1* gene located at c4808148bp to c4810298 bp on the reverse strand, SL1344_4462 situated 95bp downstream of *cstA1* on the same strand and SL1344_SPAB_05703 overlapping upstream of *cstA1* on the forward strand (4810246 bp to 4810350 bp) [18]. Gene SL1344_4462, like t4581 of *S. Typhi*, is predicted to bind nucleic acids. However, the function of SL1344_SPAB-05703 is unknown [54]. The second *cstA* gene (*cstA2*) was not differentially expressed on qRT-PCR.

For *S. Typhimurium* and its Δ yehUT mutant derivative a range of virulence experiments were performed including serum bactericidal assays (Graph A in Figure S1), tissue invasion assays (Graph B in Figure S2), acute infection mouse model (Figure S4) and streptomycin-treated colitis mouse model (Figure S5-S7). No difference was observed between these isolates. There was also no metabolic phenotype identified for *S. Typhimurium* Δ yehUT using phenotypic Biolog microarrays or E-tests against antibiotics amoxicillin, ceftriaxone, ciprofloxacin, trimethoprim-sulfamethaxole, meropenem, azithromycin and tetracycline.

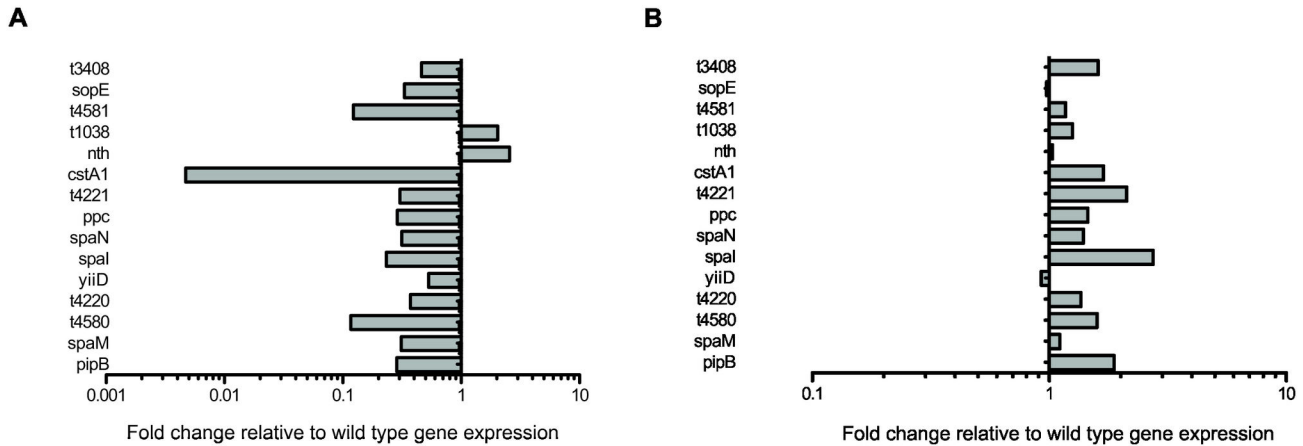


Figure 4. qRT-PCR analyses of differentially expressed genes of the *S. Typhi* $\Delta yehUT$ mutant.

A The relative expression levels of the 15 genes found to be differentially expressed on microarray analysis of the *S. Typhi* $\Delta yehUT$ mutant when compared to *S. Typhi* in low salt LB, at mid-log phase, at 37°C (Table S6 in File S1). The 15 genes examined are listed on the y-axis. Grey boxes < 1.0 indicates down regulated genes and grey boxes > 1.0 indicates up regulated genes relative to *S. Typhi*. **B** qRT-PCR analysis showing relative expression levels of genes after complementation of the $\Delta yehUT$ mutant compared to *S. Typhi* (Table S6 in File S1).

doi: 10.1371/journal.pone.0084567.g004

Table 2. DNA microarray analysis of *S. Typhimurium* $\Delta yehUT$ mutants compared to *S. Typhimurium*, grown in low salt LB at mid-log phase.

Genes	Gene ID	Putative identification of NCBI database	Functional category	Log ₂ FC	Adjusted p value
<i>yehU</i> mutant					
<i>cstA1</i>	SL1344_4463	carbon starvation protein	I	-7.36E+00	1.06E-09
-	-	hypothetical protein SPAB_05703	-	-3.82E+00	1.24E-06
-	SL1344_4462	hypothetical protein STY4889	III	-3.06E+00	3.45E-06
<i>cstA2</i>	SL1344_0588	hypothetical protein SPAB_02963 (carbon starvation protein)	II	-2.89E+00	9.25E-03
<i>yehT</i> mutant					
<i>cstA1</i>	SL1344_4463	carbon starvation protein	I	-7.33E+00	5.49E-10
-	-	hypothetical protein SPAB_05703	-	-3.79E+00	1.32E-06
-	SL1344_4462	hypothetical protein STY4889	III	-2.94E+00	5.16E-06
<i>cstA2</i>	SL1344_0588	hypothetical protein SPAB_02963 (carbon starvation protein)	II	-3.58E+00	1.25E-03
<i>yehUT</i> mutant					
<i>cstA1</i>	SL1344_4463	carbon starvation protein	I	-7.66E+00	4.23E-10
-	-	hypothetical protein SPAB_05703	-	-3.94E+00	8.86E-07
-	SL1344_4462	hypothetical protein STY4889	III	-2.68E+00	1.33E-05
<i>cstA2</i>	SL1344_0588	hypothetical protein SPAB_02963 (carbon starvation protein)	II	-3.47E+00	1.70E-03

Differential expression profiles were represented by a log₂ fold change (FC) value – a positive value indicates the gene is up regulated in the mutant strain compared to *S. Typhimurium*; a negative value indicates the gene is down regulated in the mutant strain compared to *S. Typhimurium*. Key genes identified based on an adjusted p-value of < 0.05 using the Benjamini-Hochberg method [32]. Gene annotation was performed using the *S. Typhimurium* SL1344 genome (Accession number FQ312003) [46]. Functional categories: I – pathogenicity/adaptation; II – hypothetical (unknown function); III – conserved hypothetical; IV – central/intermediary metabolism; V – regulators; cyan VI – degradation of macromolecules; VII energy metabolism; VIII – phage-related functions/IS elements.

doi: 10.1371/journal.pone.0084567.t002

Discussion

S. Typhi is a Gram-negative organism that causes the disease typhoid fever and is spread fecal-orally by ingestion of contaminated food or water [8]. Unlike most *S. enterica*

serovars, *S. Typhi* is a human restricted pathogen that entered the human population once relatively recently. Thus, all *S. Typhi* can be mapped phylogenetically back to a common ancestor and the genomes of collections of *S. Typhi* exhibit limited genetic variation [10]. That the *yehUT* operon of *S.*

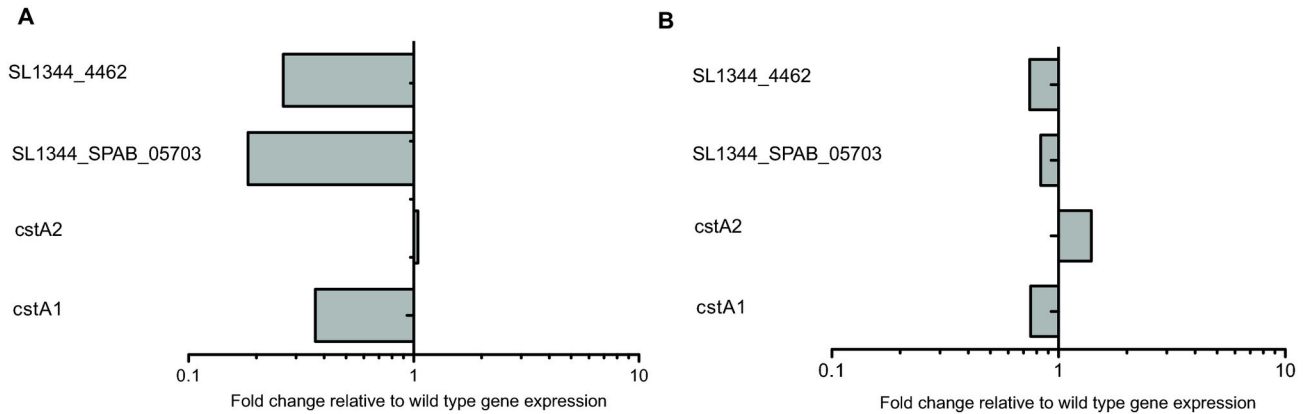


Figure 5. qRT-PCR analyses of differentially expressed genes of the *S. Typhimurium* $\Delta yehUT$ mutant.

A The relative expression levels of the 4 genes found to be differentially expressed on microarray analysis of the *S. Typhimurium* $\Delta yehUT$ mutant when compared to *S. Typhimurium* in low salt LB, at mid-log phase, at 37°C (Table S6 in File S1). The 4 genes examined are listed on the y-axis. Grey boxes < 1.0 indicates down regulated genes and grey boxes > 1.0 indicates up regulated genes relative to *S. Typhimurium*. **B** qRT-PCR analysis showing relative expression levels of genes after complementation of the $\Delta yehUT$ mutant compared to *S. Typhimurium*. (Table S6 in File S1).

doi: 10.1371/journal.pone.0084567.g005

Typhi was found to contain an unusually high number of SNPs compared to the rest of the genome was therefore of potential significance in the evolution of this pathogen [10]. In addition, large scale transposon mutagenesis (TraDIS) data obtained by investigation of *S. Typhimurium* mutant survival during infection of mice, chickens, pigs and cattle showed that a single insertion in the *yehT* gene had a significant attenuation in calves (www-tradis.vet.cam.ac.uk). Consequently we combined transcriptome analysis and phenotypic assays to gain a better understanding of this system in *Salmonella*.

The transcriptome analysis for both *S. Typhi* and *S. Typhimurium* containing $\Delta yehU$, $\Delta yehT$ or $\Delta yehUT$ revealed relative down regulation of *cstA1* associated with the response to carbon starvation along with two neighboring hypothetical genes: *t4580* and *t4581* of *S. Typhi*; *SL1344_4462*, and *SL1344_SPAB_05703* of *S. Typhimurium*. These three genes are situated within the same region of the genome of both serovars. The *cstA* gene was previously shown in *E. coli* to be positively regulated by the cyclic AMP (cAMP) and cAMP receptor protein (CRP) complex and to be involved in peptide utilization during carbon starvation [55,62,63]. In *E. coli*, expression was increased upon exhaustion of succinate, glycerol, or glucose from the medium, or upon entering stationary phase in LB [62]. CstA has been implicated as a peptide transporter [63], supported by sequence analysis that revealed the CstA protein consists of 701 amino acids and a hydrophobicity profile suggestive of an integral membrane protein [64]. A CstA homologue YjiY (>96% identity) was also up regulated when *yehT* was over expressed in *E. coli* [3]. Furthermore, YjiY, like CstA, may take part in amino acid/peptide utilization [3]. The remaining 31 genes differentially expressed in the *E. coli* study did not match the genes differentially expressed in *Salmonella*. However, Kraxenberger et al. [3] utilized over expression of the *yehT* gene compared to

our mutant derivatives, which may account for at least some of the difference in gene expression profiles.

S. Typhi $\Delta yehUT$ exhibited differential expression of a further 12 genes compared to the $\Delta yehU$ and $\Delta yehT$ mutant derivatives, including genes involved in metabolism (*yiiD*, *ppc*) pathogenicity (*spaM*, *spaN*, *spaI*, *pipB*) and regulation (*AraC*, *GerE*). This suggested that *yehUT* might modulate metabolism or virulence functions of *S. Typhi*; hence we went on to test the mutant in various biochemical and virulence assays. The difference in gene expression observed between the derivatives harboring individual and double gene deletions in *S. Typhi* might be indicative of cross-regulation between *yehUT* and another two-component regulatory system compensating for the lone loss of the sensor kinase or response regulator in the *yehUT* system [65,66].

An independent study reported relative dysregulation of 26 genes in an *S. Typhi* GIFU10007 $\Delta yehT$ mutant derivative under hypotonic conditions [67]. This dysregulation is somewhat more extensive than the three genes (*cstA1*, *t4580*, *t4581*) we identified using a $\Delta yehT$ mutant derivative of *S. Typhi* BRD948. The number of genes differentially expressed (26 genes) is more compatible with the analysis obtained from our $\Delta yehUT$ mutant (15 genes), with four genes (*spaN*, *spaM*, *spaI*, *pipB*) apparently dysregulated in both studies. It is noteworthy that the *cstA1* gene was not differentially expressed to a statistically significant level in their study and yet was the top dysregulated gene here in both *S. Typhi* and *S. Typhimurium* *yehUT* mutant derivatives under isotonic conditions. These differences in transcriptome profiling of *yehUT* may be due to differences in the experimental conditions or to the use of different parental strains.

Genetic regulation of the *yehUT* operon is not well characterized. Differential regulation of *yehU* or *yehT* was not seen in a previous study in which we identified genes by

microarray and RNA-seq of *S. Typhi* BRD948 that exhibited OmpR-dependent transcription, during mid log phase, in LB media [68]. However, another study showed that OmpR positively regulated expression of *yehUT* in *S. Typhi* GIFU10007 at low osmolarity [67]. One explanation for this discrepancy is that OmpR only induces *yehUT* expression when the osmolarity is lowered.

It has been proposed that YehU activates YehT by phosphorylation of a conserved histidine residue at position 382 [3]. In *E. coli* mutations in the putative histidine residue of YehU involved in phosphotransfer (position 382) and YehT (position 54) impacted expression of *yjiY*, a component of the *yehUT* regulon, suggesting an important role for phosphorylation at these sites [3]. A previous study has shown that autophosphorylation of YehU and phosphotransfer to YehT were barely detectable under all conditions tested [4]. However, YehU was shown to have no identifiable F box, which is a component of the histidine protein kinase domain involved in ATP binding, and probably also catalysis and phosphotransfer. This property may explain this reduction in phosphorylation [69]. In silico analysis predicted a histidine phosphotransfer (DHP) domain component of YehU, but the conserved histidine residue at 382 was not seen in second sensor kinase EnvZ on alignment comparison suggesting that these regulators have distinct mechanisms of signal transduction.

There are two copies of *cstA* gene homologues with a comparable identity of 61.9% in the genomes of both *S. Typhi* and *S. Typhimurium* serovars: *cstA1* (*S. Typhi* *t4582*; *S. Typhimurium* *SL1344_4463*), which was differentially expressed in our microarray analysis and *cstA2* (*S. Typhi* *t2268*; *S. Typhimurium* *SL1344_0588*), which was confirmed not to be dysregulated [20,21]. In a previous study we demonstrated that OmpR negatively regulates *cstA2* in both *S. Typhi* and *S. Typhimurium*, using DNA microarray analysis, but exerts no effect on *cstA1* [68]. A clearer understanding of the regulatory networks of both *cstA1* and *cstA2* may provide clues to how *Salmonella* is continually fine tuning its adaption to its host and environment.

Other than within the transcriptome profile, we were unable to identify a phenotype for *S. Typhi* or *S. Typhimurium* harboring mutations in *yehUT*. Despite the transcriptome analysis of *S. Typhi* $\Delta yehUT$ revealing dysregulation of a number of SPI genes *yehUT* mutant derivatives were able to invade cultured epithelial cells at rates comparable to control and showed no difference the mouse infection models compared to the parental strain. This is supported by studies in *E. coli* in which a phenotype for $\Delta yehUT$ mutant was also not detected [3,5].

The *yehUT* operon of *S. Typhi* may be undergoing either adaptive evolution due to host or environmental stresses or possibly a form of relaxed evolution as evidenced by the accumulation of a high number of non-synonymous SNPs. Further investigation into the biological complexity of these individual SNPs within *S. Typhi* needs to be undertaken to answer these questions more fully.

Supporting Information

Figure S1. Resistance to killing by human serum of (A) *Salmonella Typhimurium* ST4/74, *S. Typhimurium* ST4/74 $\Delta yehUT$ and *S. Typhimurium* $\Delta yehUT::cat :: yehUT::aph$, and (B) *S. Typhi* BRD 948, *S. Typhi* $\Delta yehUT$ and *S. Typhi* $\Delta yehUT :: cat pWKS30::yehUT::aph$.

Deletion of *yehUT* had no detectable impact on the resistance to antibody-mediated, complement dependent killing of either *S. Typhimurium* (A) or *S. Typhi* (B) ($p > 0.05$ for all time points). Complementation of the *yehUT* locus for both *S. Typhimurium* and *S. Typhi* mutant derivatives also had no detectable effect on resistance to serum killing. Data for each line represent the mean of the results from 10 healthy adult donors done in triplicate. The initial concentration of bacteria in the assay is approximately 1×10^6 cfu/ml. Negative values show a decrease in the number of viable bacteria over time. Error bars represent SEM.

(EPS)

Figure S2. Comparison of the ability of (A) *S. Typhi* BRD 948 and *S. Typhi* $\Delta yehUT$, and (B) *S. Typhimurium* ST4/74 and *S. Typhimurium* ST4/74 $\Delta yehUT$ to invade HEP-2 cells.

For each isolate three experiments were conducted with bacteria grown by shaking in low salt LB for 6 hours at 37°C followed by inoculating 0.5mls of this culture into 45mls fresh low salt LB in a 50ml falcon tube. These samples were left to grow statically overnight at 37°C. Each column represents the mean and SEM of numbers of viable bacteria recovered from three separate wells. In (A) the data was normalized to *S. Typhi* BRD948 and the invasiveness of *S. Typhi* $\Delta yehUT$ was not obviously affected ($p = 0.38$). In (B) the data was normalized to *S. Typhimurium* ST4/74 and the invasiveness of *S. Typhimurium* $\Delta yehUT$ was also not obviously affected ($p = 0.33$).

(EPS)

Figure S3. Vi phage assays of *S. Typhi* BRD948 and *S. Typhi* $\Delta yehUT$.

Plaque morphology and plaque counts (pfu/ml) were assessed after overnight Vi phage types II and VII infections of both *S. Typhi* BRD948 and *S. Typhi* BRD948 *yehUT*. There was no significant difference between *S. Typhi* and *S. Typhi* *yehUT* in terms of plaque morphology or counts for either Type II ($p = 0.41$) or Type VII ($p = 0.66$) phage infections.

(EPS)

Figure S4. Mixed competitive inhibition mouse experiment of *S. Typhimurium* ST4/74 and *S. Typhimurium* $\Delta yehUT$.

The competitive index (CI) ratio of output ($\Delta yehUT$ mutant/*S. Typhimurium* ST4/74) / input ($\Delta yehUT$ / *S. Typhimurium* ST4/74) was calculated for bacterial colony-forming units (CFU) in tissue from mesenteric lymph nodes (MLN), cecum, ileum, spleen and liver of five C57BL/6 mice orally inoculated with 10^8 CFU of *S. Typhimurium* ST4/74 and the $\Delta yehUT$ derivative of this parental isolate. This experiment was performed twice. Mean (central bars) and 95% confidence intervals (error bars) are shown. Results showed that there were no significant differences in bacterial counts between *S.*

Typhimurium ST4/74 and *S. Typhimurium* $\Delta yehUT$ in the MLN ($p=0.5$), cecum ($p=0.91$), ileum ($p=0.50$), spleen ($p=0.04$) and liver ($p=0.004$).
(EPS)

Figure S5. Cecal bacterial counts of *S. Typhimurium* ST4/74, *S. Typhimurium* $\Delta yehUT$ and *S. Typhimurium* $\Delta yehUT::cat::yehUT::aph$, in the streptomycin-pretreated colitis mouse experiment.

CFUs in tissue from cecum of five C57BL/6 mice pretreated with 50mg of streptomycin and then 24 hours later orally inoculated with 10^3 CFU of either (a) *S. Typhimurium* ST4/74, (b) *S. Typhimurium* $\Delta yehUT$ or (c) *S. Typhimurium* $\Delta yehUT::cat::yehUT::aph$. This experiment was performed three times. Mean (central bars) and SEM (error bars) are shown. The results showed that there were no significant differences between *S. Typhimurium* ST4/74 and the $\Delta yehUT$ derivative ($p=0.16$) and between $\Delta yehUT$ and $\Delta yehUT::cat::yehUT::aph$ ($p=0.62$).
(EPS)

Figure S6. Histopathological scoring of cecal segments of *S. Typhimurium* ST4/74, *S. Typhimurium* $\Delta yehUT$ and *S. Typhimurium* $\Delta yehUT::cat::yehUT::aph$ in the streptomycin-pretreated colitis mouse experiment.

Histopathological scoring of hematoxylin and eosin stained mouse cecal segments after five C57BL/6 mice were pretreated with 50mg of streptomycin and then 24 hours later orally inoculated with 10^3 CFU of either *S. Typhimurium* ST4/74, *S. Typhimurium* $\Delta yehUT$ or *S. Typhimurium* $\Delta yehUT::cat::yehUT::aph$. This experiment was performed three times. Scoring of intestinal inflammation was conducted by a Consultant Histopathologist and was as follows: submucosal edema: mild-1, moderate-2, severe-3; submucosal inflammation: mild-1, moderate-2, severe-3; mucosal inflammation: mild-1, moderate-2, severe-3; crypt abscesses: absent-0, present (occasional/mild)-1, present (moderate/severe)-2; mucosal ulceration: absent-0, present (focal/mild)-1, present (moderate/severe)-2. There were no significant differences in total pathological scores between the three groups.
(EPS)

Figure S7. qRT-PCR of inflammatory cytokines from cecal segments of *S. Typhimurium* ST4/74, *S. Typhimurium* $\Delta yehUT$ and *S. Typhimurium* $\Delta yehUT::cat::yehUT::aph$ in the streptomycin-pretreated colitis mouse experiment.

qRT-PCR of inflammatory cytokines from mouse cecal segments after four groups of five C57BL/6 mice were pretreated with 50mg of streptomycin and then 24 hours later either not infected with bacteria (a=naive) or orally inoculated with 10^3 CFU of (b) *S. Typhimurium* ST4/74, (c) *S.*

Typhimurium $\Delta yehUT$ or (d) *S. Typhimurium* $\Delta yehUT::cat::yehUT::aph$. This experiment was performed twice. Cytokine levels of IL-1, IL-6, KC, Mip-2, TNF- α , IFN- γ , iNOS, and Lys6-G were measured using qRT-PCR and the relative gene expression determined by normalization to Gapdh. The mean (central bars) and SEM (error bars) are shown. The results showed that there were no significant differences between (b) *S. Typhimurium* ST4/74 and (c) $\Delta yehUT$ for IL-1 ($p=0.74$), IL-6 ($p=0.5$), KC ($p=0.67$), Mip-2 ($p=0.35$), TNF- α ($p=0.58$), IFN- γ ($p=0.58$), iNOS ($p=0.31$) and Lys6-G ($p=0.89$).
(EPS)

File S1. Supporting Information Tables: Supplementary data for Characterization of the *yehUT* two-component regulatory system of *Salmonella enterica* serovar Typhi and *Typhimurium*.

Table S1. Primers used to construct the *yehUT* mutants of *S. Typhi* BRD948 and *S. Typhimurium* ST4/74. Primers used in this study. The nucleotides denoted in small letters are homologous to regions adjacent to the target gene and the nucleotides in capital letters are homologous to the template plasmids, pKD3 or pKD4, carrying antibiotic resistance genes that are flanked by FRT (FLP recognition target) sites; Table S2. Primer used to construct the complement mutants of *S. Typhi* BRD948 $\Delta yehUT$ and *S. Typhimurium* ST4/74 $\Delta yehUT$. Primers used in this study. The nucleotides denoted in small letters are homologous to regions adjacent to the target gene and the nucleotides in capital letters are homologous to the template plasmids carrying antibiotic resistance genes that are flanked by FRT (FLP recognition target) sites; Table S3. Primers used in the qRT-PCR gene expression experiment of *S. Typhi* BRD948 $\Delta yehUT$ mutant; Table S4. Primers used in the qRT-PCR gene expression experiment of *S. Typhimurium* $\Delta yehUT$ mutant; Table S5. Primers used in the mouse cecal qRT-PCR cytokine experiment; Table S6. qRT-PCR analyses of differentially expressed genes of the *S. Typhi* $\Delta yehUT$ mutant and *S. Typhimurium* $\Delta yehUT$ mutant; Table S7. SNPs identified by informatics analysis of the *yehUT* genes of the *S. Typhimurium* SL1344 genome (Accession number: FQ312003). Coordinates correspond to *S. Typhi* CT18 finished genome sequence (Accession number: AL513382).
(DOCX)

Author Contributions

Conceived and designed the experiments: GD RAK DJP CAM KS LJK KEH. Performed the experiments: VKW TMW PJH SJK LK LFM LE DJP. Analyzed the data: VKW RB CJM LB AJP MJA. Contributed reagents/materials/analysis tools: GD KS CJM RB CAM PJH LB. Wrote the manuscript: VKW DJP RAK GD. Designed the software used in analysis: LB.

References

- Gao R, Mack TR, Stock AM (2007) Bacterial response regulators: versatile regulatory strategies from common domains. *Trends Biochem Sci* 32: 225-234. doi:10.1016/j.tibs.2007.03.002. PubMed: 17433693.
- Pickard D, Li J, Roberts M, Maskell D, Hone D et al. (1994) Characterization of defined ompR mutants of *Salmonella typhi*: ompR is involved in the regulation of Vi polysaccharide expression. *Infect Immun* 62: 3984-3993. PubMed: 8063417.
- Kraxenberger T, Fried L, Behr S, Jung K (2012) First insights into the unexplored two-component system YehU/YehT in *Escherichia coli*. *J Bacteriol* 194: 4272-4284. doi:10.1128/JB.00409-12. PubMed: 22685278.
- Yamamoto K, Hirao K, Oshima T, Aiba H, Utsumi R et al. (2005) Functional characterization in vitro of all two-component signal transduction systems from *Escherichia coli*. *J Biol Chem* 280: 1448-1456. PubMed: 15522865.
- Zhou L, Lei XH, Bochner BR, Wanner BL (2003) Phenotype microarray analysis of *Escherichia coli* K-12 mutants with deletions of all two-component systems. *J Bacteriol* 185: 4956-4972. doi:10.1128/JB.185.16.4956-4972.2003. PubMed: 12897016.
- Hirakawa H, Nishino K, Hirata T, Yamaguchi A (2003) Comprehensive studies of drug resistance mediated by overexpression of response regulators of two-component signal transduction systems in *Escherichia coli*. *J Bacteriol* 185: 1851-1856. doi:10.1128/JB.185.6.1851-1856.2003. PubMed: 12618449.
- Hirakawa H, Nishino K, Yamada J, Hirata T, Yamaguchi A (2003) Beta-lactam resistance modulated by the overexpression of response regulators of two-component signal transduction systems in *Escherichia coli*. *J Antimicrob Chemother* 52: 576-582. doi:10.1093/jac/dkg406. PubMed: 12951338.
- House D, Bishop A, Parry C, Dougan G, Wain J (2001) Typhoid fever: pathogenesis and disease. *Curr Opin Infect Dis* 14: 573-578. doi:10.1097/00001432-200110000-00011. PubMed: 11964878.
- Roumagnac P, Weill FX, Dolecek C, Baker S, Brisse S et al. (2006) Evolutionary history of *Salmonella typhi*. *Science* 314: 1301-1304. doi:10.1126/science.1134933. PubMed: 17124322.
- Holt KE, Parkhill J, Mazzoni CJ, Roumagnac P, Weill FX et al. (2008) High-throughput sequencing provides insights into genome variation and evolution in *Salmonella Typhi*. *Nat Genet* 40: 987-993. doi:10.1038/ng.195. PubMed: 18660809.
- Parkhill J, Dougan G, James KD, Thomson NR, Pickard D et al. (2001) Complete genome sequence of a multiple drug resistant *Salmonella enterica* serovar Typhi CT18. *Nature* 413: 848-852. doi:10.1038/35101607. PubMed: 11677608.
- Holt KE, Thomson NR, Wain J, Langridge GC, Hasan R et al. (2009) Pseudogene accumulation in the evolutionary histories of *Salmonella enterica* serovars Paratyphi A and Typhi. *BMC Genomics* 10: 36. doi:10.1186/1471-2164-10-S3-S36. PubMed: 19159446.
- Pickard D, Wain J, Baker S, Line A, Chohan S et al. (2003) Composition, acquisition, and distribution of the Vi exopolysaccharide-encoding *Salmonella enterica* pathogenicity island SPI-7. *J Bacteriol* 185: 5055-5065. doi:10.1128/JB.185.17.5055-5065.2003. PubMed: 12923078.
- Tacket CO, Sztein MB, Losonsky GA, Wasserman SS, Nataro JP et al. (1997) Safety of live oral *Salmonella typhi* vaccine strains with deletions in *htrA* and *aroC aroD* and immune response in humans. *Infect Immun* 65: 452-456. PubMed: 9009296.
- Jones PW, Collins P, Aitken MM (1988) Passive protection of calves against experimental infection with *Salmonella typhimurium*. *Vet Rec* 123: 536-541. doi:10.1136/vr.123.21.536. PubMed: 3061151.
- Hunter S, Apweiler R, Attwood TK, Bairoch A, Bateman A et al. (2009) InterPro: the integrative protein signature database. *Nucleic Acids Res* 37: D211-D215. doi:10.1093/nar/gkn785. PubMed: 18940856.
- Krogh A, Larsson B, von Heijne G, Sonnhammer EL (2001) Predicting transmembrane protein topology with a hidden Markov model: application to complete genomes. *J Mol Biol* 305: 567-580. doi:10.1006/jmbi.2000.4315. PubMed: 11152613.
- Rutherford K, Parkhill J, Crook J, Horsnell T, Rice P et al. (2000) Artemis: sequence visualization and annotation. *Bioinformatics* 16: 944-945. doi:10.1093/bioinformatics/16.10.944. PubMed: 11120685.
- Hoise SK, Stocker BA (1981) Aromatic-dependent *Salmonella typhimurium* are non-virulent and effective as live vaccines. *Nature* 291: 238-239. doi:10.1038/291238a0. PubMed: 7015147.
- Larkin MA, Blackshields G, Brown NP, Chenna R, McGettigan PA et al. (2007) Clustal W and Clustal X version 2.0. *Bioinformatics* 23: 2947-2948. doi:10.1093/bioinformatics/btm404. PubMed: 17846036.
- Goujon M, McWilliam H, Li W, Valentin F, Squizzato S et al. (2010) A new bioinformatics analysis tools framework at EMBL-EBI. *Nucleic Acids Res* 38: W695-W699. doi:10.1093/nar/gkq313. PubMed: 20439314.
- Linehan SA, Rytönen A, Yu XJ, Liu M, Holden DW (2005) SlyA regulates function of *Salmonella* pathogenicity island 2 (SPI-2) and expression of SPI-2-associated genes. *Infect Immun* 73: 4354-4362. doi:10.1128/IAI.73.7.4354-4362.2005. PubMed: 15972530.
- Kao KC, Yang YL, Boscolo R, Sabatti C, Roychowdhury V et al. (2004) Transcriptome-based determination of multiple transcription regulator activities in *Escherichia coli* by using network component analysis. *Proc Natl Acad Sci U S A* 101: 641-646. doi:10.1073/pnas.0305287101. PubMed: 14694202.
- Datsenko KA, Wanner BL (2000) One-step inactivation of chromosomal genes in *Escherichia coli* K-12 using PCR products. *Proc Natl Acad Sci U S A* 97: 6640-6645. doi:10.1073/pnas.120163297. PubMed: 10829079.
- Chan W, Costantino N, Li R, Lee SC, Su Q et al. (2007) A recombinering based approach for high-throughput conditional knockout targeting vector construction. *Nucleic Acids Res* 35: e64. doi:10.1093/nar/gkm163. PubMed: 17426124.
- Deng W, Liou SR, Plunkett G 3rd, Mayhew GF, Rose DJ et al. (2003) Comparative genomics of *Salmonella enterica* serovar Typhi strains Ty2 and CT18. *J Bacteriol* 185: 2330-2337. doi:10.1128/JB.185.7.2330-2337.2003. PubMed: 12644504.
- Richardson EJ, Limaye B, Inamdar H, Datta A, Manjari KS et al. (2011) Genome sequences of *Salmonella enterica* serovar typhimurium, *Choleraesuis*, Dublin, and Gallinarum strains of well-defined virulence in food-producing animals. *J Bacteriol* 193: 3162-3163. doi:10.1128/JB.00394-11. PubMed: 21478351.
- Cherepanov PP, Wackernagel W (1995) Gene disruption in *Escherichia coli*: TcR and KmR cassettes with the option of Flp-catalyzed excision of the antibiotic-resistance determinant. *Gene* 158: 9-14. doi:10.1016/0378-1119(95)00193-A. PubMed: 7789817.
- Wang RF, Kushner SR (1991) Construction of versatile low-copy-number vectors for cloning, sequencing and gene expression in *Escherichia coli*. *Gene* 100: 195-199. doi:10.1016/0378-1119(91)90366-J. PubMed: 2055470.
- Uzzau S, Figueroa-Bossi N, Rubino S, Bossi L (2001) Epitope tagging of chromosomal genes in *Salmonella*. *Proc Natl Acad Sci U S A* 98: 15264-15269. doi:10.1073/pnas.261348198. PubMed: 11742086.
- Irizarry RA, Hobbs B, Collin F, Beazer-Barclay YD, Antonellis KJ et al. (2003) Exploration, normalization, and summaries of high density oligonucleotide array probe level data. *Biostatistics* 4: 249-264. doi:10.1093/biostatistics/4.2.249. PubMed: 12925520.
- Smyth GK (2005) Limma: linear model for microarray data. R Gentleman V, Carey S, Dudoit R, Irizarry W, Huber. New York: Springer.
- Schmittgen TD, Livak KJ (2008) Analyzing real-time PCR data by the comparative C(T). *Methods - Nature Protocols* 3: 1101-1108. doi:10.1038/nprot.2008.73.
- Winter SE, Thiennimitr P, Nuccio SP, Haneda T, Winter MG et al. (2009) Contribution of flagellin pattern recognition to intestinal inflammation during *Salmonella enterica* serotype typhimurium infection. *Infect Immun* 77: 1904-1916. doi:10.1128/IAI.01341-08. PubMed: 19237529.
- Rathman M, Sjaastad MD, Falkow S (1996) Acidification of phagosomes containing *Salmonella typhimurium* in murine macrophages. *Infect Immun* 64: 2765-2773. PubMed: 8698506.
- Pickard D, Toribio AL, Petty NK, van Tonder A, Yu L et al. (2010) A conserved acetyl esterase domain targets diverse bacteriophages to the Vi capsular receptor of *Salmonella enterica* serovar Typhi. *J Bacteriol* 192: 5746-5754. doi:10.1128/JB.00659-10. PubMed: 20817773.
- MacLennan CA, Gondwe EN, Msefula CL, Kingsley RA, Thomson NR et al. (2008) The neglected role of antibody in protection against bacteremia caused by nontyphoidal strains of *Salmonella* in African children. *J Clin Invest* 118: 1553-1562. doi:10.1172/JCI33998. PubMed: 18357343.
- Kingsley RA, Humphries AD, Weening EH, De Zoete MR, Winter S et al. (2003) Molecular and phenotypic analysis of the CS54 island of *Salmonella enterica* serotype typhimurium: identification of intestinal colonization and persistence determinants. *Infect Immun* 71: 629-640. doi:10.1128/IAI.71.2.629-640.2003. PubMed: 12540539.
- Perkins TT, Davies MR, Klemm EJ, Rowley G, Wileman T et al. (2013) ChIP-seq and transcriptome analysis of the *OmpR* regulon of *Salmonella enterica* serovars Typhi and Typhimurium reveals accessory genes implicated in host colonization. *Mol Microbiol* 87: 526-538. doi:10.1111/mmi.12111. PubMed: 23190111.

40. Abd El Ghany M, Jansen A, Clare S, Hall L, Pickard D et al. (2007) Candidate live, attenuated *Salmonella enterica* serotype Typhimurium vaccines with reduced fecal shedding are immunogenic and effective oral vaccines. *Infect Immun* 75: 1835-1842. doi:10.1128/IAI.01655-06. PubMed: 17296764.
41. Barthel M, Hapfelmeier S, Quintanilla-Martinez L, Kremer M, Rohde M et al. (2003) Pretreatment of mice with streptomycin provides a *Salmonella enterica* serovar Typhimurium colitis model that allows analysis of both pathogen and host. *Infect Immun* 71: 2839-2858. doi:10.1128/IAI.71.5.2839-2858.2003. PubMed: 12704158.
42. Rad R, Brenner L, Bauer S, Schwendy S, Layland L et al. (2006) CD25⁺/Foxp3⁺ T cells regulate gastric inflammation and *Helicobacter pylori* colonization in vivo. *Gastroenterology* 131: 525-537. doi:10.1053/j.gastro.2006.05.001. PubMed: 16890606.
43. Bochner BR, Gadzinski P, Panomitros E (2001) Phenotype microarrays for high-throughput phenotypic testing and assay of gene function. *Genome Res* 11: 1246-1255. doi:10.1101/gr.186501. PubMed: 11435407.
44. Homann OR, Cai H, Becker JM, Lindquist SL (2005) Harnessing natural diversity to probe metabolic pathways. *PLoS Genet* 1: e80. doi:10.1371/journal.pgen.0010080. PubMed: 16429164.
45. McFarland J (1907) Nephelometer: an instrument for estimating the number of bacteria in suspensions used for calculating the opsonic index and for vaccines. *Journal of American Medical Association* 49: 1176.
46. Kröger C, Dillon SC, Cameron AD, Papenfort K, Sivasankaran SK et al. (2012) The transcriptional landscape and small RNAs of *Salmonella enterica* serovar Typhimurium. *Proc Natl Acad Sci U S A* 109: E1277-E1286. doi:10.1073/pnas.1201061109. PubMed: 22538806.
47. Ho YS, Burden LM, Hurley JH (2000) Structure of the GAF domain, a ubiquitous signaling motif and a new class of cyclic GMP receptor. *EMBO J* 19: 5288-5299. doi:10.1093/emboj/19.20.5288. PubMed: 11032796.
48. Nikolskaya AN, Galperin MY (2002) A novel type of conserved DNA-binding domain in the transcriptional regulators of the AlgR/AgrA/LytR family. *Nucleic Acids Res* 30: 2453-2459. doi:10.1093/nar/30.11.2453. PubMed: 12034833.
49. Hsing W, Silhavy TJ (1997) Function of conserved histidine-243 in phosphatase activity of EnvZ, the sensor for porin osmoregulation in *Escherichia coli*. *J Bacteriol* 179: 3729-3735. PubMed: 9171423.
50. Langridge GC, Phan MD, Turner DJ, Perkins TT, Parts L et al. (2009) Simultaneous assay of every *Salmonella Typhi* gene using one million transposon mutants. *Genome Res* 19: 2308-2316. doi:10.1101/gr.097097.109. PubMed: 19826075.
51. Perkins TT, Kingsley RA, Fookes MC, Gardner PP, James KD et al. (2009) A Strand-Specific RNA-Seq Analysis of the Transcriptome of the Typhoid Bacillus *Salmonella Typhi*. *PLOS Genet* 5: 1-13.
52. Edgar R, Domrachev M, Lash AE (2002) Gene Expression Omnibus: NCBI gene expression and hybridization array data repository. *Nucleic Acids Res* 30: 207-210. doi:10.1093/nar/30.1.207. PubMed: 11752295.
53. Barrett T, Troup DB, Wilhite SE, Ledoux P, Evangelista C et al. (2011) NCBI GEO: archive for functional genomics data sets—10 years on. *Nucleic Acids Res* 39: D1005-D1010. doi:10.1093/nar/gkq1184. PubMed: 21097893.
54. Finn RD, Mistry J, Tate J, Coggill P, Heger A et al. (2010) The Pfam protein families database. *Nucleic Acids Res* 38: D211-D222. doi:10.1093/nar/gkp985. PubMed: 19920124.
55. Blum PH, Jovanovich SB, McCann MP, Schultz JE, Lesley SA et al. (1990) Cloning and in vivo and in vitro regulation of cyclic AMP-dependent carbon starvation genes from *Escherichia coli*. *J Bacteriol* 172: 3813-3820. PubMed: 2163388.
56. Khil PP, Obmolova G, Teplyakov A, Howard AJ, Gilliland GL et al. (2004) Crystal structure of the *Escherichia coli* YjiA protein suggests a GTP-dependent regulatory function. *Proteins* 54: 371-374. PubMed: 14696199.
57. Mirold S, Ehrbar K, Weissmüller A, Prager R, Tschäpe H et al. (2001) *Salmonella* host cell invasion emerged by acquisition of a mosaic of separate genetic elements, including *Salmonella* pathogenicity island 1 (SPI1), SPI5, and sopE2. *J Bacteriol* 183: 2348-2358. doi:10.1128/JB.183.7.2348-2358.2001. PubMed: 11244077.
58. Maeba P, Sanwal BD (1969) Phosphoenolpyruvate carboxylase of *Salmonella*. Some chemical and allosteric properties. *J Biol Chem* 244: 2549-2557. PubMed: 4890227.
59. Kashket ER, Wilson TH (1969) Isolation and properties of mutants of *Escherichia coli* with increased phosphorylations of thiomethyl-beta-galactoside. *Biochim Biophys Acta* 193: 294-307. doi:10.1016/0005-2736(69)90190-4. PubMed: 4900754.
60. Richardson AR, Soliven KC, Castor ME, Barnes PD, Libby SJ et al. (2009) The Base Excision Repair system of *Salmonella enterica* serovar typhimurium counteracts DNA damage by host nitric oxide. *PLoS Pathog* 5: e1000451. PubMed: 19478870.
61. Dizdaroglu M, Laval J, Boiteux S (1993) Substrate specificity of the *Escherichia coli* endonuclease III: excision of thymine- and cytosine-derived lesions in DNA produced by radiation-generated free radicals. *Biochemistry* 32: 12105-12111. doi:10.1021/bi00096a022. PubMed: 8218289.
62. Schultz JE, Latter GI, Matin A (1988) Differential regulation by cyclic AMP of starvation protein synthesis in *Escherichia coli*. *J Bacteriol* 170: 3903-3909. PubMed: 2842291.
63. Schultz JE, Matin A (1991) Molecular and functional characterization of a carbon starvation gene of *Escherichia coli*. *J Mol Biol* 218: 129-140. doi:10.1016/0022-2836(91)90879-B. PubMed: 1848300.
64. Dubey AK, Baker CS, Suzuki K, Jones AD, Pandit P et al. (2003) CsrA regulates translation of the *Escherichia coli* carbon starvation gene, *cstA*, by blocking ribosome access to the *cstA* transcript. *J Bacteriol* 185: 4450-4460. doi:10.1128/JB.185.15.4450-4460.2003. PubMed: 12867454.
65. Noriega CE, Lin HY, Chen LL, Williams SB, Stewart V (2010) Asymmetric cross-regulation between the nitrate-responsive NarX-NarL and NarQ-NarP two-component regulatory systems from *Escherichia coli* K-12. *Mol Microbiol* 75: 394-412. doi:10.1111/j.1365-2958.2009.06987.x. PubMed: 19968795.
66. Wanner BL (1992) Is cross regulation by phosphorylation of two-component response regulator proteins important in bacteria? *J Bacteriol* 174: 2053-2058. PubMed: 1551826.
67. Zhang H, Du H, Ji X, Ni B, Mao L et al. (2012) OmpR may regulate the putative YehU/YehT two-component system in *Salmonella enterica* serovar Typhi under hypotonic growth condition. *Curr Microbiol* 64: 283-289. doi:10.1007/s00284-011-0066-3. PubMed: 22179129.
68. Perkins TT, Davies MR, Klemm EJ, Rowley G, Wileman T et al. (2013) ChIP-seq and transcriptome analysis of the OmpR regulon of *Salmonella enterica* serovars Typhi and Typhimurium reveals accessory genes implicated in host colonization. *Mol Microbiol* 87: 526-538. doi:10.1111/mmi.12111. PubMed: 23190111.
69. Wolanin PM, Thomason PA, Stock JB (2002) Histidine protein kinases: key signal transducers outside the animal kingdom. *Genome Biol* 3: REVIEWS3013. PubMed: 12372152.