

## The Essential Medicinal Chemistry of Cannabidiol (CBD)

Kathryn M. Nelson, Jonathan Bisson, Gurpreet Singh, James G. Graham, Shao-Nong Chen, J. Brent Friesen, Jayme L. Dahlin, Matthias Niemitz, Michael A. Walters, and Guido F. Pauli\*

Cite This: *J. Med. Chem.* 2020, 63, 12137–12155

Read Online

ACCESS |



Metrics &amp; More



Article Recommendations



Supporting Information

**ABSTRACT:** This Perspective of the published essential medicinal chemistry of cannabidiol (CBD) provides evidence that the popularization of CBD-fortified or CBD-labeled health products and CBD-associated health claims lacks a rigorous scientific foundation. CBD's reputation as a cure-all puts it in the same class as other "natural" panaceas, where valid ethnobotanicals are reduced to single, purportedly active ingredients. Such reductionist approaches oversimplify useful, chemically complex mixtures in an attempt to rationalize the commercial utility of natural compounds and exploit the "natural" label. Literature evidence associates CBD with certain semiubiquitous, broadly screened, primarily plant-based substances of undocumented purity that interfere with bioassays and have a low likelihood of becoming therapeutic agents. Widespread health challenges and pandemic crises such as SARS-CoV-2 create circumstances under which scientists must be particularly vigilant about healing claims that lack solid foundational data. Herein, we offer a critical review of the published medicinal chemistry properties of CBD, as well as precise definitions of CBD-containing substances and products, distilled to reveal the essential factors that impact its development as a therapeutic agent.



## INTRODUCTION

CBD is big business. The industry surrounding the use of cannabidiol (CBD) in products from cosmetics and clothing to food, beverages, and both over-the-counter supplements and prescription pharmaceuticals is staggering. With a global market estimated at \$4.6 billion in 2018<sup>1</sup> and projected CBD sales surpassing \$20 billion in the U.S. alone by 2024,<sup>2</sup> the rate at which the public is consuming or coming into contact with this chemical has increased steadily. Similar to the expansive literature surrounding another widely used natural product we recently reviewed (curcumin and curcumin-containing products),<sup>3</sup> getting a handle on the published knowledge surrounding CBD and CBD-containing products is daunting. The sheer volume and breadth of information on CBD are a challenge for consumers and researchers alike as they seek to understand the true utility and value of both pharmaceutical-grade CBD and many CBD-labeled products from diverse sources. Hasty conclusions on the human-health impact of CBD, stemming from experiments that are often only remotely connected to biological relevance, add to the confusion. The health emergency presented by SARS-CoV-2 (and purported "cures" thereof), which emerged during the writing of this article, is a stark reminder to the scientific community that we have a serious responsibility to bring clear evidence about product composition and quality as well as the safety and efficacy to any claim for the improvement of human health.

**What's in the Name?** As with many natural products, much conflation and confusion exist between plants (here, cannabis

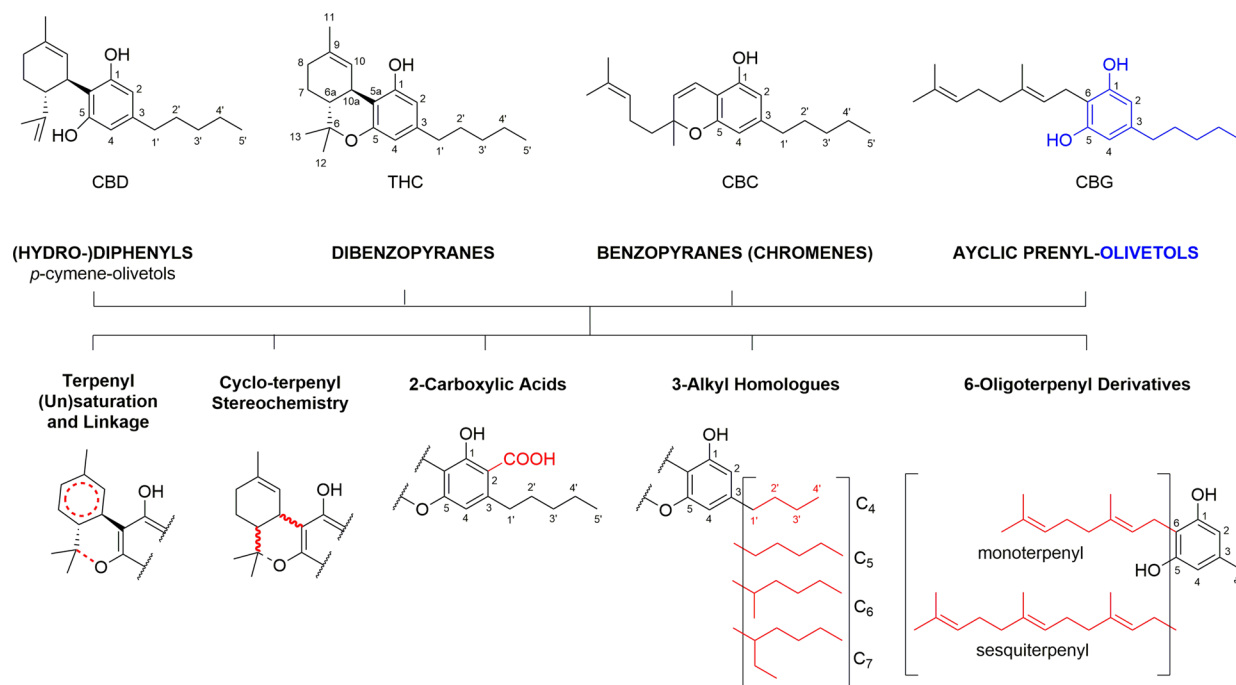
and/or hemp), products derived from them, and a single chemical entity (here, CBD). This semantic reductionism distills one or a few species of plant (here, *Cannabis sativa*, *C. indica*, or *C. ruderalis*) down to two compounds,  $\Delta^9$ -tetrahydrocannabinol (THC) and CBD, creating a damaging assumption that single and/or major ingredients can explain the ethnobotanical use of an entire plant. Such reductionism ignores both the whole-plant aspect of ethno-based biological activity as well as the metabolomic chemistry of the plant, both of which are key tenets of contemporary pharmacognosy. Recent work highlights the importance of considering polypharmacology and/or synergistic mechanisms of dietary and medicinal plant bioactivity.<sup>4–8</sup> Even when only considering cannabinoids (*vide infra*), the chemodiversity of the CBD-producing plants is expansive, leaving no justification for semantic (or scientific) reductionism.

The widespread promotion of CBD as a quasi-synonym for any *Cannabis* or hemp product has an exemplary analogy in the global dietary supplement market, where the term "curcumin" is widely, and mostly erroneously, used to refer to crude preparations from the rhizome of *Curcuma longa*.<sup>7</sup> Confusion

Received: April 30, 2020

Published: August 17, 2020





**Figure 1.** (A) Tetrahydrodiphenyl skeleton of CBD in the context of the base structures of three other main classes of cannabinoids (dibenzopyrans, benzopyrans, and acyclic prenyl-olivetols) and (B) five principal structural variations that occur in all cannabinoid classes. Different combinations of these four classes, with variations such as these presented as well as additional redox-driven metabolic modifications, explain why CBD and THC are just two molecules within the complex metabolome of cannabinoids.

on this level has great potential to interfere with, or even void, the scientific validity of discussions surrounding CBD, as well as other erroneously promoted natural product isolates. Despite this concern, there are stark differences between the case of *Cannabis*/THC/CBD and that of *Curcuma*/curcumin. For example, little evidence exists that the curcumin molecule itself has an *in vivo* effect after it has been consumed by humans. In comparison, THC has a known, pronounced CNS effect, which is part of the rationale behind its special status and regulation in many countries. CBD, while structurally very similar to THC, does not seem to share THC's psychoactive properties.<sup>8</sup>

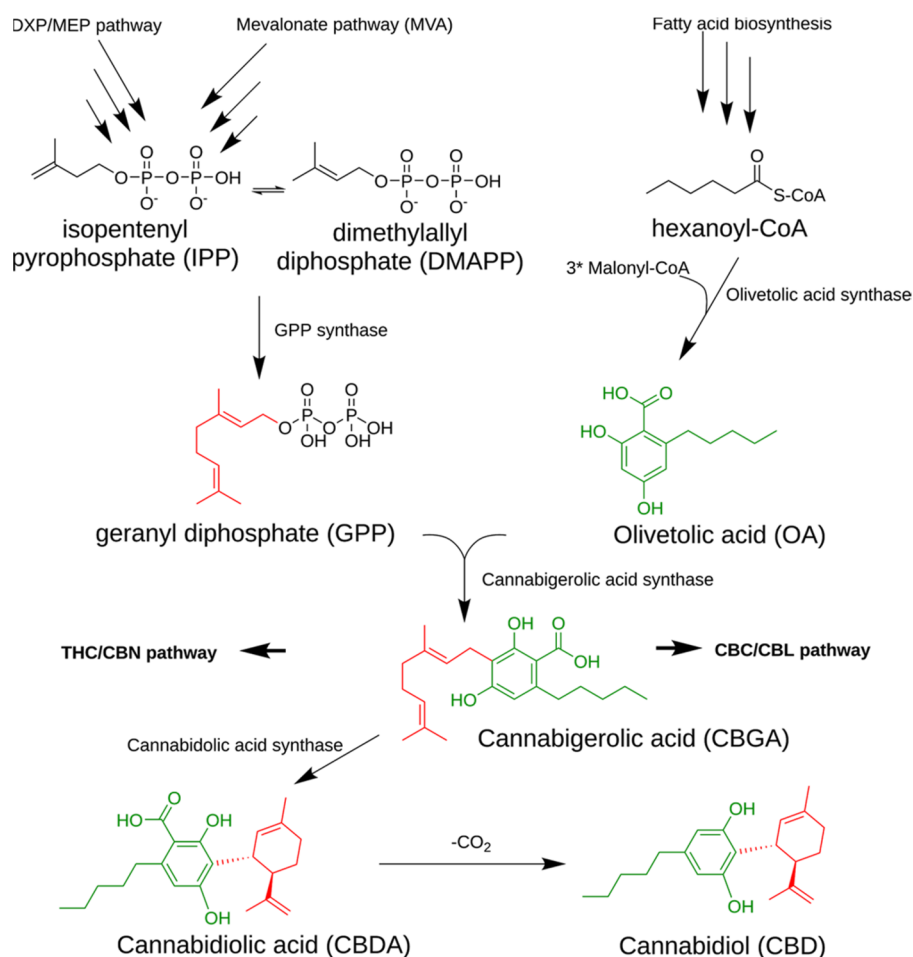
**Aims of This Perspective.** The goal of this work is to summarize the scientific facts known about CBD and provide a useful reference for anyone wishing to understand the hype surrounding CBD. This Perspective covers the legal status of CBD in the U.S., fundamentals of CBD as a natural product and its potential status as an IMP (invalid metabolic panacea), natural sourcing of CBD and the challenges of quality control. The synthetic sourcing of CBD is covered in a companion review (DOI 10.1021/acs.jmedchem.0c00095), the fundamental chemistry, pharmacology, pharmacokinetics, and pharmacodynamics (PK/PD) of CBD, and an indication-guided analysis of human clinical trials. Our work is current up to March 1, 2020, and generally relies on information published within the past 5 years. We have steered away from *in vivo* animal studies because they are too numerous, difficult to interpret, and subject to experimental artifacts,<sup>9</sup> choosing instead to focus on the evidence for therapeutic utility presented by well-designed human clinical trials.

While the verdict on CBD remains to be decided, our perspective is that it is certainly not the universal panacea that it is touted to be. Nor is it an innocuous natural substance that should be unregulated in the marketplace and/or used to fortify products for credulous human consumption. This Perspective

hopes to clear up some of the smoke clouding the discussion of CBD by providing essential facts that help cut through the media chaos.

**Ten Facts about CBD.** The following summarizes ten key facts related to CBD.

- (1) CBD is a promoter of DDI (drug–drug interactions) and potentiates the action of many drugs (5–10  $\mu$ M).<sup>10</sup>
- (2) CBD is a membrane interactor: it promiscuously affects ion channels by membrane pressure and direct binding (0.1–5  $\mu$ M).<sup>11,12</sup>
- (3) CBD has a strong “meaning effect”: individuals expect it to work.<sup>13</sup>
- (4) CBD is 6% orally bioavailable by some reports.<sup>14</sup>
- (5) CBD's typical dose in nonmedicinal products is much lower than that used in clinical trials and in prescriptions (25 mg in a typical nonmedicinal product versus 150–1500 mg/day clinical trials).<sup>15</sup>
- (6) “CBD has the potential to harm you” (similar to other drugs).<sup>16</sup>
- (7) CBD can be converted to THC by chemical means but appears not to convert to THC under physiological conditions (*vide infra*).
- (8) CBD is currently considered an illegal supplement (“It is currently illegal to market CBD by adding it to a food or labeling it as a dietary supplement”).<sup>16</sup>
- (9) “CBD” is a popular product label but often misleading: frequently “CBD” products contain many other chemically complex ingredients in addition to varying, sometimes small, amounts of CBD. Valid CBD label-claims require rigorous analytical characterization of its identity, purity, and stability (elements of residual complexity; *vide infra*) rather than blanket statements such as “pure” or “natural”.



**Figure 2.** The biosynthetic pathway of cannabinoids is the result of the intersection of three metabolic pathways in *Cannabis* sp.

- (10) CBD has not displayed meaningful activity *on its own* in a double-blinded, placebo-controlled clinical trial. Trials that underlie claims of a wide range of health have predominantly used CBD as minor ingredient or part of adjunctive therapy schemes that coadminister other substances/preparations, often seeking to leverage “botanical synergy” (also involving residual complexity; *vide infra*). This is also important considering that CBD displays strong DDIs (*vide infra*).

## ■ NATURAL PRODUCT (BIO-)CHEMISTRY OVERVIEW

**CBD Is Just One Molecule in the Vast Chemical Space of Cannabinoids.** Formally, CBD can be considered to have a tetrahydrobiphenyl skeleton: a bicyclic core that represents an adduct formed by the monoterpene, *p*-cymene, and the alkylresorcinol derivative, olivetol (Figure 1). CBD can be converted into the tricyclic dibenzopyran,  $\Delta^9$ -THC (THC), via an acid-catalyzed reaction.<sup>17,18</sup> While CBD and THC are prominent members of the cannabinoid family of compounds, they are just a part of the numerous representatives of the chemical subspace of the terpenylalkylresorcinol metabolome of plants of the *Cannabis* genus.

Irrespective of their close biogenetic relationships (*vide infra*, Biosynthetic Pathways), the cannabinoids represent a structurally diverse chemical space. While this diversity has been explored relatively extensively due to the strong general interest in *Cannabis* phytochemistry, it offers much untapped structural

potential for reasons that become evident from the following chemical and biogenic rationales.

The expression of naturally occurring cannabinoids (phyto-cannabinoids) undergoes dynamic changes during the course of plant growth<sup>19</sup> and consist of four major classes of molecules with distinct skeletons (Figure 1). All of these major classes contain an olivetol core (i.e., a resorcinol) in which one hydroxyl group is replaced by an alkyl chain ( $C_5$  in olivetol; with linear and branched  $C_4$  to  $C_7$  alkyl chains also known to occur). In addition to the bicyclic tetrahydrobiphenyl and tricyclic dibenzopyran classes, benzopyrans (synonym, chromenes; prototype, cannabichromene [CBC]) and acyclic prenyl-olivetols (prototype, cannabigerol [CBG])<sup>20</sup> are the other key classes of cannabinoids. Within each, a variety of possible metabolomic processes in the plant can effect further structural modifications, expanding the *Cannabis* metabolome in five major dimensions: (1) the variation of terpenyl saturation and linkage; (2) the terpenyl stereochemistry; (3) the presence vs absence of C-2 carboxylation (“acids”); (4) the variation of length and branching of the olivetol alkyl chain (e.g., homologous cannabinoids);<sup>20</sup> (5) the presence and variation of the monoterpene vs sesquiterpene moieties. Collectively, this gives rise to a plethora of natural cannabinoid metabolites. The full breadth of the resulting cannabinoid chemodiversity likely remains to be explored. Moreover, cannabinoids are only one family among several phytoconstituent classes in *Cannabis* plants.



**Biosynthetic Pathways.** In the living plant and fresh plant material, many cannabinoids are present in the form of carboxylic acids. The underlying biogenic pathways are sufficiently well-characterized to allow for heterologous expression of the overall pathway.<sup>21</sup> In plant material, CBD acid and analogous cannabinoids are readily decarboxylated to their neutral forms in the presence of heat and during other mechanical manipulation and/or storage. For example, dried and aged plant material contains both neutral and acidic forms of CBD. The extent of decarboxylation also depends on the extraction method and processing that occurs before the CBD content is measured.

*Cannabis* sp. are prolific producers of terpenes and terpenoids, a phenomenon that can also be observed in other plants such as *Eucalyptus* sp. that are known to produce hundreds of these compounds.<sup>21,22</sup> It is likely that most of the cannabinoids are produced at the intersection of three major biosynthetic pathways: the DXP (deoxyxylulose phosphate, also called methylerythrol phosphate [MEP]) pathway, the MVA (mevalonic acid) pathway, and the fatty acid pathway that feeds a polyketide synthase (PKS), olivetolic acid synthase (Figure 2).<sup>21,23</sup> The diversity of cannabinoids produced by *Cannabis* sp. is mainly achieved through nonenzymatic modifications occurring after the production of a common precursor.<sup>21,23</sup> While predictive studies of the kinds of cannabinoids that could potentially be produced by these plants are unavailable, the diversity of metabolites arising from these pathways is congruent with the already hundreds of identified cannabinoids.

**CBD Residual Complexity, Purity, Identity, and Quality Control.** When choosing a method of chemical separation of the cannabinoid metabolome, the occurrence of homologous alkyl and prenyl side chains, single vs double cyclized monoterpene rings, and presence vs absence of pyran/chromene rings (Figure 1) present a chromatographic challenge. These three structural permutations alone produce a mixture of molecules with closely similar polarities and overall molecular shapes. These challenges for the resolution capabilities of current chromatographic systems apply equally to detection methods that depend on prior separation such as GC- and LC-MS, as well as to preparative methods including adsorbent-based column and countercurrent/centrifugal partition (CCC/CPC) chromatography that are employed for the targeted purification of cannabinoids, such as CBD. Accordingly, when working with *Cannabis* and related materials, it would be naive to assume that individual chromatographic peaks arise from single ("pure") compounds. Even narrow elution time windows probably contain residual amounts of congeneric cannabinoids and, therefore, represent cases of residual complexity (<https://go.uic.edu/residualcomplexity>).

Accordingly, CBD, THC, and any other "purified" individual cannabinoids are subject to the principles of residual complexity and its analytical implications. This caveat applies even when high purity has been demonstrated by a rigorous method, such as a combination of LC-UV/MS and quantitative NMR (qNMR),<sup>24</sup> as the stability of high purity material and/or chemical changes during biological/clinical testing (i.e., dynamic residual complexity) needs to be demonstrated separately. While thermoanalytical (DSC, TGA) purity assays for CBD are unavailable in the literature, they have recently been introduced for cocrystal forms of CBD.<sup>25</sup> Extraction methods or synthetic methodologies used in the preparation of CBD products have a significant impact on what constitutes the final preparation labeled with/as "CBD".

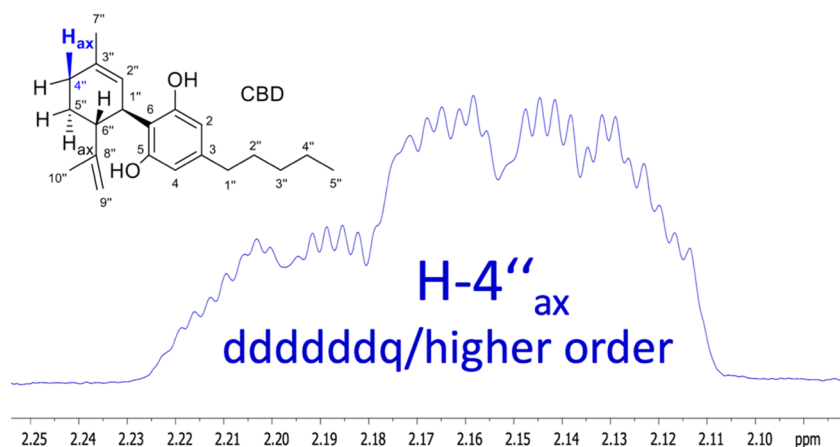
In addition, residual complexity can involve both phytochemicals or synthetic reagents present in the original preparation that can be carried through to the final step, as well as known (e.g., decarboxylation) or unanticipated chemical transformations that may occur under the conditions used for extraction or purification. Some concern exists that CBD may rearrange to THC, but this transformation, while chemically feasible (*vide infra*), is not likely to occur during extraction, separation, or purification.<sup>26</sup>

The unique fingerprints of such residually complex materials can be used to help identify the source and method of production of a CBD product. Chemical fingerprinting methodology, currently used to identify illegal/counterfeit drugs, could be adopted for cannabinoids to aid with the identification of the source (material, origin) of various CBD products.<sup>27</sup>

Considering the permutational variations and resulting close structural resemblance of natural cannabinoids, authentic CBD, including CBD reference materials, must undergo rigorous characterization involving at least HRMS supporting its molecular formula (C<sub>21</sub>H<sub>30</sub>O<sub>2</sub>), 1D/2D <sup>1</sup>H and <sup>13</sup>C NMR assignments, as well as physicochemical determination of its properties including UV, IR, melting point (66–67 °C, although this is dependent on polymorph) and boiling point (189 °C, experimental conditions incl. pressure not reported), and optical rotation (–125°) (from <https://scifinder.cas.org> and ref 28). Ideally, the reference material is crystalline, and its quality is supported by X-ray diffraction analysis. Universal as well as simultaneous qualitative and quantitative capabilities<sup>24,29</sup> make NMR a highly versatile analytical method that is particularly suitable for CBD and cannabinoids in general. This potential was already recognized in 2004 by Hazekamp, Choi, and Verpoorte,<sup>30</sup> who utilized the relatively simple resonances of the uncoupled or meta-coupled aromatic hydrogens as well as that of the olefinic hydrogen in the monoterpene moiety to determine the purity of isolated cannabinoids, as well as their quantity, in extracts. A recently published quantitative NMR (qNMR) method permits the absolute quantitation of CBD using combined external (crystalline CBD) and internal (residual CHCl<sub>3</sub> signal) calibration.<sup>31</sup>

One important feature of the 1D <sup>1</sup>H NMR spectra of CBD that has been underutilized to date pertains to the information richness of the underlying <sup>1</sup>H,<sup>1</sup>H spin coupling systems. Considering the cyclic, unsaturated partial structure of CBD, it can be anticipated that not only geminal and vicinal (<sup>2</sup>/<sub>3</sub>J) but also a wealth of long-range couplings (predominantly <sup>4</sup>/<sub>5</sub>J) are present in the molecule. This gives rise to numerous fine splittings in the apparently simple "singlet" signals that reveal themselves as "multiplet" resonances upon closer inspection. Another complication of interpreting the 1D <sup>1</sup>H NMR spectrum of CBD, which actually represents a highly characteristic feature for the identification of the compound, relates to the higher order coupling effects of closely resonating methylene and methine hydrogens. Recent advancement in the quantum mechanics-based computational analysis of <sup>1</sup>H NMR spectra has enabled a full interpretation of such spectra, using an approach termed HiFSA (<sup>1</sup>H iterative full spin analysis),<sup>32</sup> leading to the extraction of full sets of chemical shifts (δ) and coupling constants (J).

One major advantage of HiFSA profiles is that they enable the calculation and comparison of <sup>1</sup>H NMR spectra at any field strength,<sup>32</sup> thus covering all practically available NMR instruments from 40 to 900+ MHz. Another feature of HiFSA is that it can utilize digitally archived raw NMR data, as long as they are



**Figure 3.** Not only is the axial hydrogen, H-4''<sub>ax</sub>, involved in multiple *J*-couplings within the monoterpene moiety, but its <sup>1</sup>H NMR resonance is also affected by the close resonance behavior of its coupling partners. The resulting pronounced higher order effects of the ddddddq-type multiplet encode the spin parameters of half of the molecule in such a way that the H-4''<sub>ax</sub> resonance alone becomes diagnostic for the entire CBD molecule. See [section S1, Supporting Information](#), for the detailed results of the underlying <sup>1</sup>H iterative full spin analysis (HiFSA).

**Table 1. Key Terms and Definitions**<sup>38</sup>

Material	Definition
<i>Cannabis</i>	Plant of the <i>Cannabaceae</i> family that produces biologically active cannabinoids, some of which are controlled under the Controlled Substances Act (CSA) since 1970 <sup>39</sup>
Marijuana	<i>Cannabis</i> plant that produces THC at 20%+ levels
Hemp	The plant <i>Cannabis sativa</i> L. and any part of the plant and all derivatives thereof with a THC content of <0.3% (dry weight). <sup>39</sup> Hemp can contain as much as 20% or more CBD.
Hemp seeds/oil	Whole seeds or oil, containing fatty acid esters, that is expressed or extracted from seeds. These products contain 0% THC and trace levels of CBD.
Cannabinoids	Family of chemicals that act on the endocannabinoid system. The <i>Cannabis</i> plant synthesizes many cannabinoids, such as THC and CBD.
THC	Δ <sup>9</sup> -Tetrahydrocannabinol, a cannabinoid used for medicinal purposes and nonmedicinally for its (intoxicating) CNS effects. CAS no. 1972-08-3
CBD	Cannabidiol, a cannabinoid with an undefined mechanism of action. Biosynthetically related to THC. Not intoxicating even at high doses. CAS no. 13956-29-1
Cannabis-derived products for medicinal use	Medicinal products containing cannabis or cannabinoids derived from the <i>Cannabis</i> plant (e.g., THC and/or CBD in well-defined proportions)
Synthetic cannabinoids for medicinal use	Medicinal products containing synthetically produced cannabinoids that typically mimic the effects of THC
Nonmedicinal CBD products	Products containing CBD that are widely sold as herbal remedies but are not regulated as medicinal products
Nonmedicinal cannabis	Material from the <i>Cannabis</i> plant that is not regulated as a medicinal product, widely used for its (intoxicating) CNS effects
Nonmedicinal synthetic cannabinoids	Synthetic cannabinoids that are typically not structurally related to naturally occurring cannabinoids and are not currently recognized for medicinal use (e.g., synthetic cannabinoid receptor agonists, found in products such as "spice")

maintained and shared among scientists and practitioners using FAIR principles.<sup>33,34</sup> This enables the comparison of samples and verification of compound identity over a long period of time, across multiple laboratories, and without the need for authentic reference materials. In order to help leverage the capabilities of HiFSA profiles for future applications and demonstrate the power of raw data sharing, we have performed a retrospective HiFSA analysis of a 2004 CBD raw <sup>1</sup>H NMR data (FID; [Supporting Information section S1](#)). [Figure 3](#) shows how the highly characteristic single <sup>1</sup>H NMR resonance of H-4''<sub>ax</sub> (axial) can serve as a fingerprint signal that represents the entire CBD molecule. This enables the use of routine <sup>1</sup>H NMR spectroscopy for unambiguous identity assays via comparison of <sup>1</sup>H NMR spectra at any field strength.<sup>32</sup> Moreover, due to the inherently quantitative nature of NMR, appropriately acquired qualitative data can be utilized for qNMR-based CBD purity analysis that is independent of identical reference standards.

General identity and purity assays for CBD involve liquid- and gas-chromatographic comparison with authentic reference

material. However, product purity can deviate substantially from assumed grades or values, even when quantitatively measured against authentic standards, as the method is only as reliable as the characterization of the reference material. The vastly different abundance of the metabolites in crude cannabinoid mixtures explains why minor components can go undetected unless multiple preparative steps and/or orthogonal separation systems are employed. At the same time, minor components can be the principal or even sole factors for biological outcomes, as shown recently for a 0.24% impurity of an antimycobacterial agent.<sup>35</sup> Likewise, a major "pure" component can exhibit only minor or no real effects. As the biological potency of individual compounds spans many orders of magnitude, correlations between compound abundance and observed potency can be counterintuitive when considered from a chemical perspective alone.<sup>36</sup>

Applied to CBD and the other cannabinoids, the concept of residual complexity has to be considered carefully when using materials for preclinical biological studies and/or for clinical

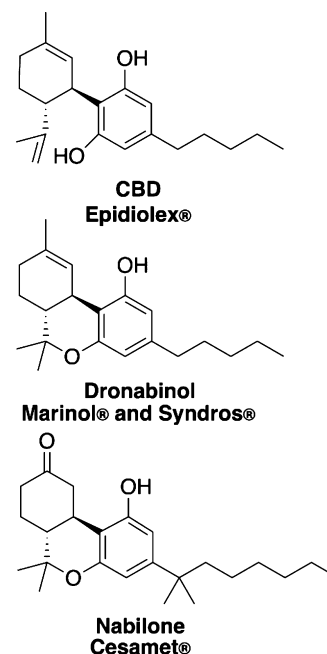
interventions, including as nutritional supplements, and is essential for the reproducibility of any studies with such materials. The recent work by Citti et al. on the production and purity of CBD as well as the identification of the 3-butyl homologue as a common impurity confirms the relevance of the residual complexity for CBD and other cannabinoids.<sup>37</sup> In their article, the authors also highlight the applicability of ICH guidelines (Q3A(R2)), calling for the impurity analysis of APIs to the level of 0.10% and 0.05% for daily doses of below and above 2 g of the API, respectively.<sup>37</sup>

## REGULATORY OVERVIEW

As of March 2020, the U.S. Federal Drug Administration (FDA) had not approved the marketing of cannabis for the treatment of any disease or condition. The FDA has, however, approved one cannabis-derived product for medicinal use (Table 1), Epidiolex, which contains CBD as API and is only available from a licensed healthcare provider with a prescription.<sup>14,40</sup> The FDA has not approved any other CBD products currently on the market in the United States. Epidiolex is an oral solution that contains 100 mg/mL CBD, and the underlying patent refers to CBD from both *Cannabis* plant extracts and synthesis as potential sources. Inactive ingredients in this formulation include dehydrated alcohol [not less than 98% volume EtOH], sesame seed oil, strawberry flavor, and sucralose.<sup>41</sup> Epidiolex was approved for the treatment of seizures associated with Lennox–Gastaut or Dravet syndrome in patients 2 years of age or older.<sup>39</sup> Both syndromes are rare forms of treatment refractory epilepsy that represent <5% of all childhood epilepsies. Regarding the various products that contain (or claim to contain<sup>42</sup>) CBD and are marketed without a prescription, the FDA has published the following guidance, which we quote here for clarity.

*“Under the FD&C Act [note: Food, Drug, and Cosmetic Act, 1938], any product intended to have a therapeutic or medical use, and any product (other than a food) that is intended to affect the structure or function of the body of humans or animals, is a drug. Drugs must generally either receive premarket approval by the FDA through the New Drug Application (NDA) process or conform to a “monograph” for a particular drug category, as established by FDA’s Over-the-Counter (OTC) Drug Review. CBD was not an ingredient considered under the OTC drug review. An unapproved new drug cannot be distributed or sold in interstate commerce. FDA continues to be concerned at the proliferation of products asserting to contain CBD that are marketed for therapeutic or medical uses although they have not been approved by FDA. Often such products are sold online and are therefore available throughout the country. Selling unapproved products with unsubstantiated therapeutic claims is not only a violation of the law, but also can put patients at risk, as these products have not been proven to be safe or effective. This deceptive marketing of unproven treatments also raises significant public health concerns, because patients and other consumers may be influenced not to use approved therapies to treat serious and even fatal diseases. Unlike drugs approved by FDA, products that have not been subject to FDA review as part of the drug approval process have not been evaluated as to whether they work, what the proper dosage may be if they do work, how they could interact with other drugs, or whether they have dangerous side effects or other safety concerns.”<sup>39</sup>*

In addition to one CBD product, the FDA has approved three non-CBD cannabis-related drug products (Figure 4). Marinol



**Figure 4.** Structures of the active ingredients of FDA-approved drugs containing CBD or related compounds.

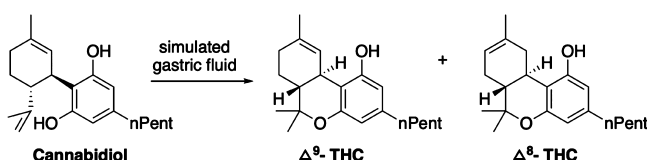
and Syndros have both been approved for therapeutic uses in the United States, including for the treatment of anorexia associated with weight loss in AIDS patients. Both therapies include dronabinol as the active ingredient, a synthetic form of THC, which is considered the psychoactive component of cannabis. Cesamet is an FDA-approved product that contains nabilone as the active ingredient, which is synthetically derived and has a chemical structure similar to THC.

With these four exceptions, no product containing cannabis or cannabis-derived compounds (either plant-based or synthetic) have been approved as safe and effective for use in any patient population, whether pediatric or adult. Going even farther, CBD containing products are explicitly excluded from being sold as “dietary supplements”. Following section 201(ff)(3)(B) of the FD&C Act [21 U.S.C. § 321(ff)(3)(B)], if a substance (here, CBD) is approved as an active ingredient in a drug product, then products containing that substance are excluded from the definition of a dietary supplement.

## CONVERSION OF CBD TO THC

(–)-CBD was the major phytocannabinoid in extracts of *Cannabis sativa* L. plants from which it was first isolated and structurally characterized in 1940.<sup>43,44</sup> Jones subsequently confirmed the chemical structure by X-ray crystallography in 1977.<sup>45</sup> CBD is chemically unstable at room temperature, undergoes air oxidation to form cannabidiol hydroxyquinone,<sup>46,47</sup> and can isomerize to other cannabinoids in acidic environments. Gaoni and Mechoulam reported the isomerization of CBD to THC and other cannabinoids under aqueous acidic conditions; however this conversion results in a mixture of isomeric THCs in low yields. More recently, in a patented method, CBD was converted to  $\Delta^9$ -THC in quantitative yield using boron trifluoride etherate as a Lewis acid in anhydrous  $\text{CH}_2\text{Cl}_2$ .<sup>48</sup> The sensitivity of CBD to acidic conditions has led to

the hypothesis that conversion of CBD to THC under the gastric acidic environment *in vivo* can cause adverse pharmacological effects from CBD-based marketed products.<sup>49</sup> This conversion has been debated in the literature, however, and there is no direct evidence of the conversion of CBD to THC in the human gut.<sup>50</sup> Two *in vitro* studies have used simulated gastric fluid to test the plausibility of this conversion. The first study reported the formation of THC in 2.9% yield along with other cannabinoid products in artificial gastric fluid without pepsin.<sup>51</sup> In 2016, Zynerva Pharmaceuticals reported the formation of psychoactive cannabinoids ( $\Delta^9$ -THC and  $\Delta^8$ -THC) by exposing CBD to simulated gastric fluid (SGF),<sup>49</sup> showing 98% conversion of CBD to these THC products (~49% yield) within 2 h by UPLC–MS analysis (Figure 5).



**Figure 5.** Acid instability of cannabidiol as reported by Zynerva Pharmaceuticals.<sup>49</sup>

However, Grotenhermen<sup>52</sup> and Nahler<sup>50</sup> later refuted the *in vivo* relevance of this report by pointing out that the SGF protocol differs significantly from the physiological conditions present in the stomach. Furthermore, these follow-up studies reviewed data from previously conducted clinical trials of CBD and found no reports of THC or related metabolites. A recent study by the Lachenmeier group further ruled out the feasibility of CBD to THC transformation.<sup>53</sup> They conducted stability studies of pure CBD solutions stored in SGF or subjected to a range of storage conditions, such as heat and light. Mass spectrometric (LC/MS/MS) and ultrahigh-pressure liquid chromatographic/quadrupole time-of-flight mass spectrometric (UHPLC-QTOF) analyses could not confirm the formation of THC under any of these conditions.

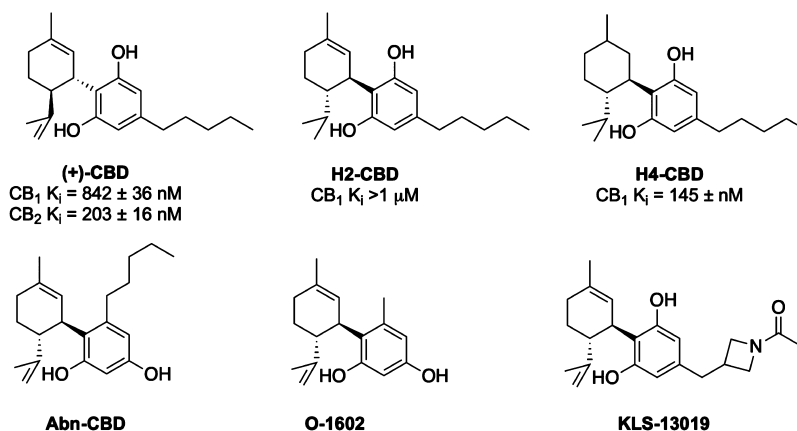
None of the *in vitro* experiments reviewed herein represent a sufficiently robust model to predict the *in vivo* gastric stability of CBD, and the findings in each case may be a product of the various experimental conditions employed. The currently available and always accumulating *in vivo* data should be used to rule out the possibility of THC formation, especially studies where CBD is dosed at high levels. In the simplest *in vivo*

experiment, if CBD to THC conversion takes place in the stomach, one would expect to see THC in feces upon high oral dosing of the CBD. However, this has not yet been reported as both CBD and THC are excreted unchanged in the feces (*vide infra*).

## BIOACTIVITY OF SIMPLE CBD ANALOGS

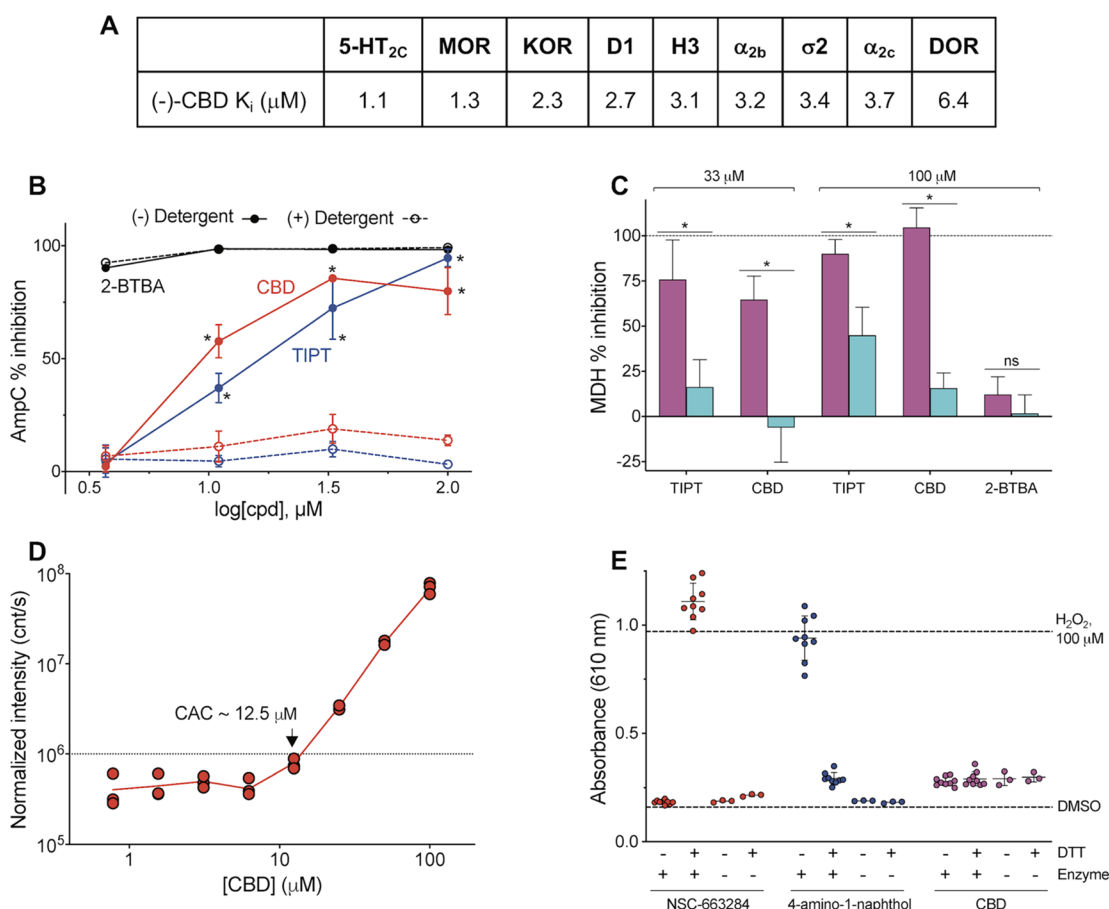
Inspired by the ethnopharmacology of *Cannabis* extracts and potentially driven by reductionist research approaches (*vide supra*), natural (–)-CBD has attracted attention as a drug candidate and as a lead compound for medicinal chemistry campaigns. However, efforts so far have resulted in few new compounds as clinical or preclinical candidates. The large number of such studies make it impossible to review all of the results herein, but an examination of close CBD analogs will put this body of work into context. Extensive first-pass metabolism and the observed polypharmacology of CBD make it challenging to relate its therapeutic effects to a precise molecular target (*vide infra*). This complicates the optimization of compounds because no one target can effectively drive structure–activity relationship studies. Synthetic analogues of CBD have been targeted based on modification of the C3-alkyl chain, the phenol ring, and the limonene moiety. Biological studies of these compounds led to identification of compounds with interesting pharmacological properties (Figure 6).

Hydrogenation of the double bonds in CBD resulted in H2-CBD and H4-CBD, with reported anti-inflammatory properties, anticonvulsant properties,<sup>54</sup> and moderate affinity for the CB<sub>1</sub> receptor.<sup>55</sup> Unlike the naturally occurring (–)-CBD, the enantiomeric (+)-CBD is not found in nature. (+)-CBD and its analogs have been synthesized and evaluated for CB<sub>1</sub>/CB<sub>2</sub> receptor affinity, showing strong activity below 1  $\mu$ M.<sup>56,57</sup> More interestingly, evaluation of these compounds in the tetrad group of assays,<sup>58</sup> commonly used for assessing effects on cannabinoid system, suggests that they do not activate CB<sub>1</sub> receptors in the brain but may have potential to selectively target the peripheral CB<sub>1</sub> receptors for the management of peripheral pain and inflammation.<sup>57</sup> Neuroprotective studies of C-3 alkyl chain analogs of CBD resulted in the identification of KLS-13019 that was 50-fold more potent (40 nM vs 2  $\mu$ M for CBD) and >400-fold less toxic (therapeutic index of 7500 vs 16) than CBD in preventing ammonium acetate and ethanol-induced damage to hippocampal neurons.<sup>59</sup> A recently completed preclinical study concluded that KLS-13019 regulates the mitochondrial sodium–calcium exchanger-1 (mNCX-1), which is an impor-



**Figure 6.** Selected bioactive synthetic analogs of cannabidiol.





**Figure 7.** Interference profiling of CBD. (A) CBD shows moderate activity at several receptors.  $K_i$  values were reported from testing by PDSP. Full data are in [Supporting Information](#). (B) CBD shows concentration-dependent, detergent-sensitive inhibition of AmpC in a colloidal aggregation counterscreen. TIPT, positive aggregation control; 2-BTBA, positive nonaggregator control. Data are the mean  $\pm$  SD of four intrarun technical replicates. (C) CBD shows detergent-sensitive inhibition of MDH in an orthogonal aggregation counterscreen. Compounds were tested at 33 or 100  $\mu$ M final concentrations in either the presence (blue) or absence (magenta) of buffer containing freshly added 0.01% Triton X-100 (v/v). Data are the mean  $\pm$  SD of at least three intrarun technical replicates. (D) CBD forms detectable colloidal aggregates at approximately 12.5  $\mu$ M by DLS. (E) CBD does not produce detectable  $H_2O_2$  in a HRP-PR redox-cycling counterscreen. Compounds were assayed at 250  $\mu$ M final concentrations, 1 mM DTT, enzyme.  $H_2O_2$ , positive control; NSC-663284 and 4-amino-1-naphthol, positive control compounds. Data are mean  $\pm$  SD of at least three intrarun technical replicates.

tant therapeutic target for the treatment of chemotherapy-induced peripheral neuropathy (CIPN).<sup>60</sup> Abn-CBD, a synthetic regioisomer of CBD, and O-1602 have been reported to engage orphan receptors GPR-18 (no  $EC_{50}$  reported) and GPR-55 ( $EC_{50}$  2 nM), respectively, that are involved in diverse physiological processes.<sup>61–64</sup>

## ■ PHARMACOLOGY

**CBD Receptor Activity.** The broad-ranging therapeutic utility claimed of CBD has been attributed to its reported pharmacological activity at a number of receptors. Some of the most frequently highlighted targets of CBD include the following: ligand-gated ion channels (GlyR, NaV, nACh, GABA<sub>A</sub>), TRP channels (TRPV1, TRPV2, TRPA1, TRPM8), GPCRs (5-HT<sub>1A</sub>,  $\alpha_{1A}$ ,  $\mu$ -OPR,  $\delta$ -OPR, CB<sub>1</sub>, CB<sub>2</sub>, GPR18, GPR55), enzymes (FAAH, CYP450), and nuclear receptors (PPAR $\gamma$ ).<sup>65–67</sup> From a careful inspection of the original publications where these bioactivities are reported, the outcomes are almost certainly irrelevant to most nonprescription products given the relatively small dose of CBD that such products contain and the low bioavailability of CBD (*vide infra*, [Absorption](#)).

Even in the case of high-dose pharmaceutical products, some *in vivo* activities of CBD are only supported by brain concentrations that are achieved if CBD is dosed at 120 mg/kg in mice.<sup>68</sup> For example, the allosteric effects reported for  $\mu$ - and  $\delta$ -opioid receptors were stated by the study authors not to be of significance because the  $EC_{50}$  values of those interactions are approximately 100-fold higher than those of the plasma concentration of 36 ng/mL (approximately 100 nM) in humans when given a single dose of an oral preparation containing 100 mg of CBD.<sup>69</sup> Likewise, CBD only displaced the agonist [<sup>3</sup>H]-8-OH-DPAT from the 5-HT<sub>1A</sub> receptor at  $EC_{50}$  = 8–16  $\mu$ M and [<sup>3</sup>H]-ketaserin from 5-HT<sub>2A</sub> at  $EC_{50}$  ~ 32  $\mu$ M.<sup>70</sup> In the case of ion channels, it has been noted that the channel modulating effects of CBD are rather promiscuous and may be explained by a combination of direct interaction of CBD with the channel and the impact of CBD on membrane bilayer flexibility.<sup>11,12</sup> This is similar to the membrane disrupting effects seen with many (overstudied) natural products.<sup>71,72</sup>

Importantly, it is generally accepted that CBD is 50-fold less active at the endocannabinoid receptors ( $K_i$  of 4350 nM at CB<sub>1</sub> and 2860 nM at CB<sub>2</sub>) than THC ( $K_i$  of 40.7 nM at CB<sub>1</sub> and 36.4 nM at CB<sub>2</sub>).<sup>73</sup> This has been used to explain the lack of



psychoactive effects of CBD even at high dosing. Ironically, the observed therapeutic utility of CBD may be due to the “meaning effect” activating this placebo pathway (*vide infra*).<sup>74</sup>

In an attempt to better understand some of the reported receptor activities of CBD, we profiled a broad panel of neurological receptors offered by the Psychoactive Drug Screening Program at UNC (Supporting Information section S2). CBD did not show appreciable activity (<50% inhibition at 10  $\mu$ M) at 37 of the 45 targets assayed. It displayed measurable, but not significant, inhibition (>50% inhibition at 10  $\mu$ M) at the following receptors: 5-HT<sub>2C</sub>, MOR, KOR, D1, H3,  $\alpha_{2b}$ ,  $\sigma_2$ ,  $\alpha_{2C}$ , and DOR (Figure 7A). CBD failed to achieve full inhibition at any of these receptors, as evidenced by dose–response curves that do not reach 0% activity at the highest concentrations tested (see Supporting Information section S2). The reported  $K_i$  values for these nine receptors were all >1  $\mu$ M. Considering that pharmacological activity can only be achieved by free or unbound compound in circulation (the free drug principle<sup>75</sup>), the plasma protein binding of CBD becomes important in relation to these  $K_i$  values. CBD is reported as ~90% plasma protein bound,<sup>76</sup> meaning that in the presence of serum proteins the  $K_i$  may be significantly higher. However, plasma protein binding alone cannot predict the relevant *in vivo* concentration of a compound.<sup>77</sup> Therefore, whether or not these activities are relevant to the *in vivo* activity of CBD in humans remains to be further investigated.

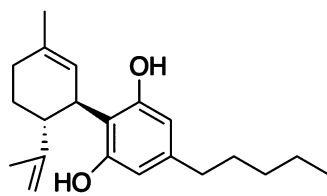
**Interaction of CBD with CYPs.** The most relevant observed bioactivity of CBD as it relates to current therapeutic utility appears to be its ability to interact with CYPs. This binding has been demonstrated in numerous settings and leads to the best-documented activities of CBD, which are drug–drug interactions (DDIs) or, in the case of herbal products, drug–herb interactions (DHIs). These DDIs/DHIs cause an increase of plasma concentration of drugs that are metabolized by the CYPs, in turn generating a measurable increase in the effect of said drugs. For example, a bidirectional drug interaction occurs with the combination epilepsy medication clobazam and CBD. This results in a 1.7- to 2.2-fold increase in the mean plasma clobazam concentration in patients receiving clobazam concomitantly with 40 mg kg<sup>-1</sup> day<sup>-1</sup> of CBD oral solution compared with 10 mg kg<sup>-1</sup> day<sup>-1</sup> and 20 mg kg<sup>-1</sup> day<sup>-1</sup>.<sup>78</sup>

In a phase I, open-label pharmacokinetic trial, dosing CBD concomitantly with clobazam led to an 3.4-fold increase in  $C_{max}$  and AUC of *N*-desmethylclobazam, the major active metabolite of clobazam.<sup>10</sup> CBD treatment of pediatric patients taking clobazam resulted in higher reporting of side effects that could be ameliorated by clobazam dose reduction.<sup>79</sup> Finally, clinical trial simulations of the effect of 20 mg kg<sup>-1</sup> day<sup>-1</sup> CBD on drop-seizure frequency in patients (some of whom were also taking clobazam) with Lennox–Gastaut syndrome showed that the claimed efficacy of CBD may be largely explained by its drug–drug interaction with clobazam.<sup>80</sup> Clobazam is primarily metabolized in the liver by CYP3A4, with minor involvement from CYP2C19 and CYP2B6.<sup>81</sup> CBD is active at these CYPs at or below 1  $\mu$ M (*vide infra*, Toxicology). Therefore, while CBD is an effective part of the therapy, the mechanism of action of CBD may be simply to increase the tissue concentration of another disease-modifying therapeutic. While possessing therapeutically useful properties as an adjuvant, CBD alone has not, to our knowledge, been shown to have disease-modifying effects on epilepsy or any other disease.

## BIOASSAY INTERFERENCES OF CBD

CBD exhibits bioassay promiscuity. This unwanted effect is likely due to CBD's ability to disrupt membranes and its high lipophilicity, especially when paired with high compound test concentrations *in vitro* (i.e., micromolar). Table 2 details several

Table 2. Physicochemical Properties of CBD



**CBD**

Property	Value
MW	314.47 g/mol
log <i>P</i>	5.91
ClogP	6.64
tPSA	40.46 Å <sup>2</sup> s
H-bond donors	2
H-bond acceptors	2
rotatable bonds	6

relevant physicochemical properties calculated for CBD using ChemDraw Professional 16 (PerkinElmer) and Molinspiration Property Calculation Service (version 2018.10).<sup>82</sup> Compounds can interfere with assay technologies to produce false-positive readouts or nonspecifically perturb biological systems by poorly optimizable mechanisms of action such as redox cycling, colloidal aggregation, membrane perturbation, and general cytotoxicity, to name a few.<sup>83</sup> This motivated the profiling of CBD for several common sources of biological assay interference as part of this study.

In our experiments (see experimental details in Supporting Information), CBD showed detergent-sensitive inhibition of two unrelated enzymes, AmpC  $\beta$ -lactamase and malate dehydrogenase (MDH), at low micromolar concentrations, which is consistent with nonspecific inhibition by colloidal aggregation (Figure 7B,C). CBD formed detectable colloidal aggregates by dynamic light scattering (DLS) at approximately 12.5  $\mu$ M [Figure 7D; n.b. the critical aggregation concentration (CAC) can vary several-fold depending on experimental conditions]. By contrast, CBD did not produce detectable levels of H<sub>2</sub>O<sub>2</sub> in a counterscreen for redox activity (Figure 7E). These data suggest that CBD likely forms colloidal aggregates at low micromolar concentrations, which is significant as aggregators can nonspecifically perturb proteins in both cell-free and cellular assays. Along with the noted effects of CBD on *in vitro* cellular health (e.g., cytotoxicity, proapoptotic), this calls into question how to interpret and practically apply studies that attribute specific bioactivities to CBD when testing concentrations were near the approximate CAC (or within ranges that may adversely perturb cellular health).<sup>11,84,85</sup>

In our experience with chemical probe validation, tantalizing readouts and pharmacological models produced under these conditions can be reproduced by a variety of bad-acting compounds, pointing to a nonspecific mechanism of action. In addition, these experiments can lack relevance as the *in vitro* conditions would never be achieved *in vivo*. Cell-based activity should always be accompanied by biomarker evidence of target

Table 3. Average CBD Dose,  $T_{\max}$ , and  $C_{\max}$  for Human Studies of CBD Administration<sup>a</sup>

	avg dose (mg)	avg $T_{\max}$ (h)	avg $C_{\max}$ (ng/mL)	avg $C_{\max}$ (nM)	$F$ (%) (if reported)
low oral dose <sup>b</sup>	14 ± 15	1.9 ± 1.2	2.8 ± 2.2	0.9	
high oral dose <sup>c</sup>	525 ± 340	3.1 ± 0.3	131.9 ± 82.5	41.5	
inhalation dose <sup>d</sup>	3.5 ± 5.5	0.3 ± 0.3	35.3 ± 41.3	11.1	31

<sup>a</sup>Analysis of 50 reported studies of CBD dosing that included reported plasma levels. <sup>b</sup>Dose range: 1.5–20 mg. <sup>c</sup>Dose range: 100–800 mg. <sup>d</sup>Dose range: 1.5–20 mg.

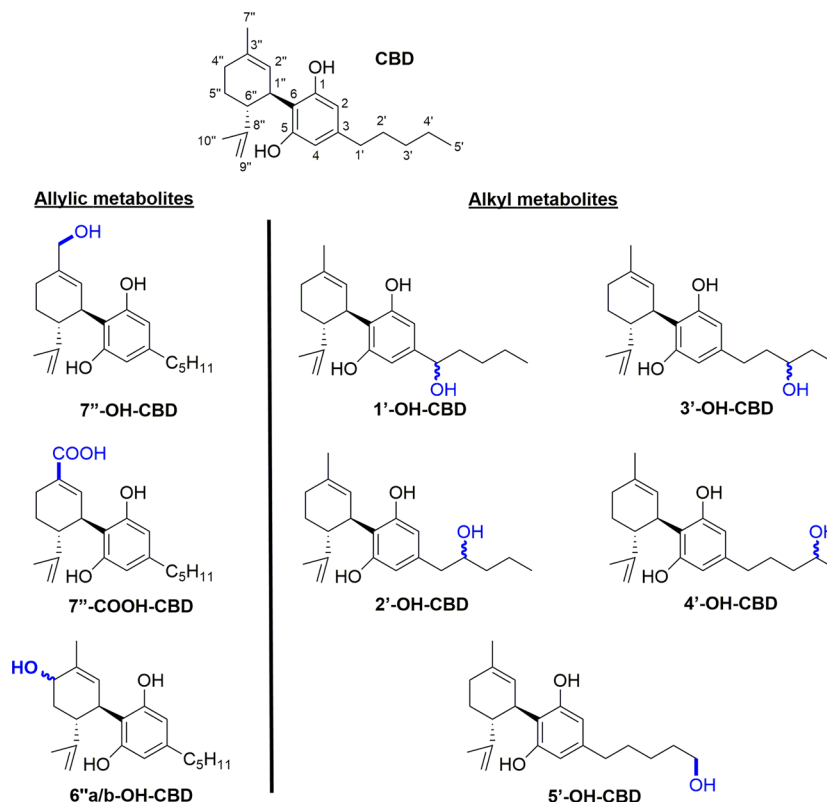


Figure 8. Major metabolites of cannabidiol.

engagement. Given its ability to injure cells, we would recommend that future *in vitro* studies characterize the effects of CBD on cellular health in parallel to activity studies.

### ■ ADMET: ABSORPTION, DISTRIBUTION, METABOLISM, EXCRETION, TOXICOLOGY

Due to the diverse nature of the routes of administration by which CBD has been studied, its pharmacokinetic (PK) analysis is more complex than for other therapeutics. In addition to the traditional oral (i.e., capsule) and parenteral (i.e., intravenous) routes, CBD has also been studied as oral sublingual drops, oromucosal spray, or a component of a food product and as an inhalation agent through an aerosol, nebulizer, vapor, or cigarettes. All of these varied formulations and routes of administration carry different propensities for adsorption and distribution, which then affects the rest of the measured PK characteristics of the compound.

**Absorption.** CBD has been studied in a wide variety of formulations but has generally been administered orally either as a capsule, dissolved in an oil or other organic solvent, or as an oromucosal spray.<sup>15</sup> Study doses are commonly a single dose in the 2–20 mg range, with some studies testing doses upward of 800 mg (Table 3). The plasma  $C_{\max}$  generally increases with increased dose and is slightly increased in the fed vs fasted state;

the  $T_{\max}$  is not significantly impacted by dose. Absorption appears highest upon inhalation, whether by smoking or other forms of vaporization. At the time of this article, the only rigorous bioavailability ( $F$ ) reported was in a smoking study of five male participants that reported an average bioavailability of 31%.<sup>86</sup> When considering the differences seen in plasma concentration from oral dosing, it is expected that oral bioavailability is significantly lower. In an animal study of CBD oral bioavailability, three dogs led to an  $F$  range of 13–19%.<sup>87</sup>

**Distribution.** Complete details of bodily distribution of CBD are not readily available. In the same study as cited above on oral bioavailability, the volume of distribution of CBD upon iv dosing was 2520 L.<sup>86</sup> Several studies of volume of distribution for oromucosal spray formulations report extremely high volumes of distribution between 26 000 and 31 000 L.<sup>88</sup> These data suggest that any CBD that enters systemic circulation is widely distributed throughout the tissues of the body. In a study of CBD oral dosing in mice, 120 mg/kg resulted in a range of maximum brain tissue concentrations of 4–21  $\mu\text{M}$ .<sup>89</sup> Another study looked at the concentration of CBD in the brain of mice after subcutaneous administration at 10 mg/kg and reported a  $C_{\max}$  of 1–2  $\mu\text{M}$ .<sup>68</sup> Not surprisingly, the concentration of CBD in brain tissue is always measured as

being lower than the correlating plasma concentration. Therefore, CBD levels in human brain tissue are likely to be lower than the reported plasma concentrations in humans (see Table 3, <50 nM); however there appears to be no significant barrier to brain penetration of CBD.

**Metabolism.** In general, CBD shows similar metabolism to that of THC, which aligns with their structural similarity (Figure 1A). CBD is subject to a high first-pass effect, similar to THC.<sup>90</sup> CBD is affected by extensive oxidative metabolism, with the most prominent metabolites being allylic hydroxylation products at the 6- and 7-positions, followed by alkyl hydroxylation products at all positions along the alkyl chain (Figure 8).<sup>91,92</sup> Several of these metabolites have been identified in human plasma,<sup>93</sup> and at least one report of the analysis of human urine identifies these and the glucuronides of the phenolic oxygen species.<sup>94</sup> Several *in vitro* studies have investigated which cytochrome P450 enzymes are primarily responsible for these transformations. The allylic hydroxylations are primarily performed by CYP2C19 and CYP3A4, while the alkyl hydroxylations can be produced by a wider variety of enzymes: CYP3A4, CYP3A5, CYP1A1, CYP1A2, CYP2C9, and CYP2D6. Recent *in vitro* evidence showed the formation of decarbonylated metabolites via CYP3A4 activity in human liver microsomes.<sup>95</sup> To date, no literature suggests significant receptor activity for any of these identified CBD metabolites.

Of great interest is the question of whether CBD can be converted to THC after dosing. While there is some contested evidence that highly acidic environments can facilitate this transformation (*vide supra*), no evidence in the current literature suggests that CBD is metabolized into THC *in vivo*.<sup>96–98</sup>

**Excretion.** The half-life of elimination ( $t_{1/2}$ ) of CBD is variable and depends especially on its route of administration. Generally, oral administration via oil, oromucosal spray, or nebulizer/aerosol leads to a  $t_{1/2}$  of about 2 h.<sup>99,100</sup> Administration via iv, smoking, or chronic oral administration leads to a significantly longer  $t_{1/2}$  of 24 h, 31 h,<sup>86</sup> or 2–5 days,<sup>101</sup> respectively.

While CBD and THC are both subject to a strong first-pass effect, a significant portion of both cannabinoids are excreted unchanged in the feces.<sup>102</sup> This suggests that a large portion of a CBD dose is not absorbed, which matches the reports of low bioavailability.<sup>14</sup> The families of oxidized and glucuronidated metabolites are largely excreted by the kidneys and can be identified in the urine.

The overall plasma clearance of CBD varies depending on the fed vs fasted state. Oromucosal spray administration of doses ranging from 5 to 20 mg yields apparent plasma clearance ( $CL'$ ) ranging from 2500 to 4700 L/h.<sup>88,103,104</sup> This decreases to 533 L/h for the same concentration range in a fed state.<sup>103</sup> In contrast, the mean elimination rate ( $K_{el}$ ) does not change significantly between the fed and fasted states. There is some variation in elimination rate depending on the route of administration. Oromucosal spray administration results in  $K_{el}$  (1/h) values ranging from 0.12 to 0.17. Nebulizer or aerosol administration, however, results in  $K_{el}$  values of 0.98 and 0.43, respectively.<sup>99</sup>

**Toxicology.** CBD appears to generally be safe upon administration via several routes at low doses (<100 mg). However, studies of CBD use in combination with other drugs, and animal toxicological studies, raise concerns of DDIs and other potential adverse effects.

As the metabolism of CBD has been well-studied (*vide supra*), the administration of CBD when taking drugs that are known to

inhibit or activate relevant cytochrome P450s will alter the overall plasma concentration and/or half-life of CBD in the plasma. In addition, CBD has been shown to inhibit some cytochrome P450 enzymes at physiologically achievable levels (Table 4).<sup>105</sup> Importantly, CBD interferes with the metabolism

Table 4. *In Vitro* Inhibition of CYP Activity by CBD<sup>105</sup>

	CBD $K_i$ ( $\mu$ M)
CYP1A1	0.16
CYP1A2	2.69
CYP1B1	3.63
CYP2A6	55.0
CYP2B6	0.69
CYP2C9	5.60
CYP2C11	20.7
CYP2C19	0.79
CYP2D6	2.42
CYP3A4	1.00
CYP3A5	0.19
CYP3A7	12.3
CYP17	124

of both hexobarbital<sup>106</sup> and, as presented earlier, clobazam<sup>79</sup> if given concomitantly, raising concerns for drug–drug interactions (DDIs).

More recently, several studies have been published warning about potential adverse effects of CBD administration, as determined through cellular or animal studies. In 2017, the hypothesis that CBD can be neuroprotective in neonatal hypoxic–ischemia was tested in pigs. High-dose (25 or 50 mg/kg) CBD resulted in significant hypotension (mean arterial blood pressure drop below 70% of baseline), including death by fatal cardiac arrest in at least one animal. In addition, no neuroprotective effect was observed in this model as measured by neuropathology, astrocytic markers, and other plasma markers.<sup>107</sup> In 2018, the pattern of DNA methylation in the sperm of cannabis users was found to be significantly altered, and overall sperm concentration was significantly lower as compared to nonusers.<sup>108</sup> These changes were similar to the shift in epigenetic patterns seen in THC-exposed rats, which raises the concern for possible inheritable epigenetic changes related to cannabis use.<sup>109</sup> It is not known whether chronic use of CBD alone can lead to epigenetic changes.

Research into the reproductive toxicity of chronic CBD exposure in male mice corroborates the potential reproductive toxicity.<sup>110</sup> The authors report that 34 days of 15 or 30 mg/kg daily dosing resulted in significant changes in several measures of reproductive health, including testosterone levels, spermatogenesis, daily sperm production, and increased abnormal sperm morphology. A 2019 study aimed at determining the potential hepatotoxicity of CBD evaluated gene expression arrays in mice after oral dosing of a single high dose (246–2460 mg/kg) or a chronic lower dose (61.5–615 mg/kg for 10 days) of CBD.<sup>111</sup> In this study, gene expression arrays showed alteration of >50 genes following CBD dosing, relating to oxidative stress responses, lipid metabolism pathways, and drug metabolizing enzymes. Finally, a study of CBD exposure in two human-derived cell lines showed nuclear aberrations and DNA damage consistent with single and double strand breaks and apurinic sites.<sup>112</sup> This cellular damage was observed at CBD concentrations (0.22  $\mu$ M) that are relevant to reported CBD exposure in humans.



**Clinical Trials.** From a thorough analysis of the literature, it appears that CBD has not shown efficacy as a single substance in any phase II or III clinical trials. In phase I trials, CBD has been shown to be generally well-tolerated at single doses up to 6000 mg and multiple doses up to 1500 mg twice daily.<sup>93</sup> The most common side-effects were gastrointestinal disorders, headaches, and somnolence. CBD has advanced to phase III clinical trials in certain rare forms of epilepsy. In the pivotal phase III clinical trials (multicenter, randomized, double-blind, placebo-controlled) that led to the approval of Epidiolex, all patients were typically taking at least three other seizure medicines along with CBD: clobazam (47–51%), valproate (all forms, 37–39%), levetiracetam (30–32%), lamotrigine (26–33%), or rufinamide (26–34%) (name of the medication, percent of patients taking the drug across all arms of the trial).<sup>113</sup> In this trial, the median percent reduction from baseline in drop-seizure frequency was 42% in the 20 mg kg<sup>-1</sup> day<sup>-1</sup> group (the average age of study participant was 15 years, ~1000 mg/day) and 17% in the placebo group.

Although this result was in part responsible for the approval of Epidiolex in these hard-to-manage forms of epilepsy, the significance of this result with respect to the pharmacological action of CBD has been called into question. This is because of known DDIs between CBD and other antiepileptic drugs,<sup>114</sup> which is especially relevant in the case of clobazam and its active metabolite, *N*-desmethyloclobazam. CBD doses of 20 mg kg<sup>-1</sup> day<sup>-1</sup> (as were used in the Epidiolex trial) are known to increase the exposure of *N*-desmethyloclobazam 2- to 6-fold in children with refractory epilepsy despite clobazam dose reductions.<sup>79</sup> This, and other evidence, led Groeneweld to propose that the effect of CBD on drop-seizure frequency may be explained solely on this DDI, without the need to invoke any special epilepsy-treating pharmacology to CBD.<sup>80,115</sup> The American Epilepsy Society had the following to say about these clinical trials (quoted here for clarity):

*“Recently, there have been several scientifically rigorous, double-blind, placebo-controlled randomized clinical trials of one specific pharmaceutical-grade, purified, highly concentrated CBD for patients with refractory epilepsy that have been published. Studies evaluating the pharmacokinetics and potential drug–drug interactions with this formulation have also been published or presented at epilepsy congresses. These trials demonstrated that this one pharmaceutical-grade CBD is moderately effective in the treatment of patients with seizures in both Lennox–Gastaut syndrome (LGS) and Dravet syndrome. However, these studies also showed that CBD has more side effects than placebo and revealed previously unrecognized drug–drug interactions.”*<sup>116</sup>

We found several examples of CBD being touted as a remedy for addiction,<sup>117</sup> aging,<sup>118</sup> anxiety, arthritis,<sup>119</sup> concussion,<sup>120</sup> depression, nausea, obesity,<sup>121</sup> pain, Parkinson's disease,<sup>122</sup> post-traumatic stress disorder, and psychiatric disorders (among others).<sup>117</sup> However, no evidence of double-blinded, placebo-controlled clinical trials that supported these claims could be located. One double-blinded trial, albeit not placebo-controlled, in patients with schizophrenia reported a clinically significant reduction in PANSS scores (positive and negative symptoms scale) of patients treated with 800 mg/day. In this case, the quality of the CBD used in the trial was not reported.<sup>123</sup>

Anecdotal claims of CBD therapeutic utility often arise from what are actually inconclusive studies. For example, some claims of the therapeutic utility of CBD are based on studies where the

substance being tested was actually cannabis (extract) rather than CBD; in other studies the size of the trial was too small to make any conclusive judgements; and in still others the patients were taking other medications that may be subject to CBD DDIs. Therefore, it remains blurred whether any clinical trials have shown CBD alone to be effective for therapeutic use. Claims to the contrary must ensure the relevance of the referenced clinical trial by qualifying the following points:

- (1) What was the exact identity and purity of the CBD used? Note that APIs are distinct from crude preparations (such as plant extracts) and that residual complexity (including significant content in, for example, THC; *vide supra*) is relevant and will confound the study results.
- (2) Was the trial placebo-controlled?
- (3) Was the trial double-blinded?
- (4) Was the statistical analysis plan published before the trial?<sup>124</sup>
- (5) Did the authors claim significance of the results?
- (6) If CBD was used in combination, was the possibility of DDIs considered? Is the coadministered agent metabolized by CYPs?

It is also important to note that the effective CBD doses used in most reported clinical trials are typically 800–1000 mg/day. Putting this into the perspective, commercial “tinctures” or “oils” commonly found in the marketplace consist of less than 20 mg of CBD per serving. A typical consumer-sized bottle of CBD oil (30 mL) might contain 1000 mg total CBD and cost on the order of \$50–60.<sup>125</sup>

With respect to anecdotal reports of efficacies of CBD oils and tinctures, such CBD “personal trials” may be subject to a “placebo” response based on the cachet of CBD as a well-known component of (medical) cannabis. The intricate influence of the placebo effect on the testing of cannabis and cannabinoids has been discussed; e.g., Gertsch wrote recently,<sup>13</sup> “Unlike with other medicinal plants that have rather questionable efficacies and unknown mechanisms of action, nobody seems to doubt *a priori* the therapeutic effectiveness of cannabis. Accordingly, patients who use medical cannabis products have high expectations of beneficial effects (i.e., the plant is meaningful to them).” and “Rather than being either a placebo or drug, cannabis might be a drug both conveying and inducing a meaning response.” The anthropologist, David Moerman, referred to this effect of the conveyed meaning embodied in the placebo as the “meaning response”.<sup>126</sup> Therefore, because CBD has been so conflated with cannabis, even if CBD has no direct pharmacological effect, its associated “meaning effect” may activate a secondary pharmacological effect. Ironically, this meaning effect in CBD trials may occur via the endocannabinoid CB<sub>1</sub> and CB<sub>2</sub> pathways, receptors for which CBD has no intrinsic activity, though they are the primary mediators of THC's effects.<sup>13,127</sup> Clinical trials of botanical preparations fail to reject the placebo-based null hypothesis<sup>128</sup> and report unexpectedly pronounced placebo effects<sup>129,130</sup> more commonly than API-based trials, which further supports the relevance of “meaning responses” and “meaning effects”.

## SUMMARY

*Cannabis* is a useful therapeutic and source of lead compounds. At the same time, the reductionist tendencies of Western medicine have seen certain *Cannabis* preparations reduced to the pure compound, CBD. While this study could not find evidence supporting the numerous and broad health claims associated with CBD, evidence suggests that CBD can affect



biological systems in the following ways: (a) through a strong, physiologically relevant interaction with metabolizing enzymes, thereby modulating the activity of other substances; (b) via a strong “meaning effect”; (c) by means of a weak, promiscuous, and low-level modulation of membrane-bound proteins.

The recent FDA approval of CBD as a drug excludes it from being used as a dietary supplement in the U.S. If used at low doses, e.g., as one (minor) constituent of supplements, which often carry the potentially misleading “CBD” label, CBD most likely cannot produce any therapeutic effect. When used at high doses, any therapeutic effect is likely due to either the strong interaction of CBD with metabolic enzymes, its likely “meaning effect”, or a result of other components contained in products labeled as “CBD”. Additionally, at the highest doses, negative side-effects are likely to become more pronounced, thereby limiting the utility of this substance.

Unless the purity of CBD is assessed rigorously, or whenever a chemically complex (crude) material is the component of a product bearing the “CBD” label, residual complexity can become a major disruptor in the logical chain that connects CBD as an API and pharmacological agent with its role as the key active component of the preparation: residually complex materials have a much increased chance of containing other, especially minor and/or more potent, bioactives.

While many claims have been made about a large variety of potential health benefits of CBD, the present work uncovers a lack of scientific foundation to most of these claims. While CBD can enter systemic circulation at potentially physiologically relevant levels, there is no clear understanding of the receptor activity of CBD and an even greater deficiency in terms of potentially harmful adverse effects. Whereas an FDA-approved therapeutic regimen containing CBD does exist, the efficacy of the treatment appears to be related to its DDI mechanisms. Importantly, unless new biological targets for antiviral and/or health resilience can be discovered and validated, product claims that CBD has health effects for treatment or alleviation of SARS-CoV-2 and analogous viral pathogens should be considered unsubstantiated and misguided.<sup>131</sup>

Widely available products with chemically complex ingredients containing various amounts of CBD are a major confounding factor in distinguishing sound experimental evidence, including clinical trials and other *in vivo* outcomes, from unsubstantiated or anecdotal health claims. This observation reflects a concerning global trend of obscuring the lack of quality control parameters and objective health outcomes of freely available products by associating them with the word “natural” and similarly implicative terms. More rigorous work needs to be done to determine what, if any, specific efficacy CBD may have as a therapeutic agent.

## ■ ASSOCIATED CONTENT

### SI Supporting Information

The Supporting Information is available free of charge at <https://pubs.acs.org/doi/10.1021/acs.jmedchem.0c00724>.

Quantum-mechanical <sup>1</sup>H NMR characterization of CBD using HiFSA, psychoactive drug screening program activity of CBD, and pharmacological methods for evaluation of CBD (PDF)

## ■ AUTHOR INFORMATION

### Corresponding Author

**Guido F. Pauli** – Center for Natural Product Technologies, Program for Collaborative Research in the Pharmaceutical Sciences (PCRPS), and Department of Pharmaceutical Sciences, College of Pharmacy and Institute for Tuberculosis Research, College of Pharmacy, University of Illinois at Chicago, Chicago, Illinois 60612, United States; [orcid.org/0000-0003-1022-4326](https://orcid.org/0000-0003-1022-4326); Phone: (312) 355-1949; Email: [gfp@uic.edu](mailto:gfp@uic.edu)

### Authors

**Kathryn M. Nelson** – Department of Medicinal Chemistry, Institute for Therapeutics Discovery and Development, University of Minnesota, Minneapolis, Minnesota 55414, United States; [orcid.org/0000-0001-8274-2064](https://orcid.org/0000-0001-8274-2064)

**Jonathan Bisson** – Center for Natural Product Technologies, Program for Collaborative Research in the Pharmaceutical Sciences (PCRPS), and Department of Pharmaceutical Sciences, College of Pharmacy and Institute for Tuberculosis Research, College of Pharmacy, University of Illinois at Chicago, Chicago, Illinois 60612, United States; [orcid.org/0000-0003-1640-9989](https://orcid.org/0000-0003-1640-9989)

**Gurpreet Singh** – Department of Medicinal Chemistry, Institute for Therapeutics Discovery and Development, University of Minnesota, Minneapolis, Minnesota 55414, United States; [orcid.org/0000-0002-5878-3154](https://orcid.org/0000-0002-5878-3154)

**James G. Graham** – Center for Natural Product Technologies, Program for Collaborative Research in the Pharmaceutical Sciences (PCRPS), and Department of Pharmaceutical Sciences, College of Pharmacy and Institute for Tuberculosis Research, College of Pharmacy, University of Illinois at Chicago, Chicago, Illinois 60612, United States; [orcid.org/0000-0002-7114-8921](https://orcid.org/0000-0002-7114-8921)

**Shao-Nong Chen** – Center for Natural Product Technologies, Program for Collaborative Research in the Pharmaceutical Sciences (PCRPS), and Department of Pharmaceutical Sciences, College of Pharmacy and Institute for Tuberculosis Research, College of Pharmacy, University of Illinois at Chicago, Chicago, Illinois 60612, United States; [orcid.org/0000-0003-0748-0863](https://orcid.org/0000-0003-0748-0863)

**J. Brent Friesen** – Center for Natural Product Technologies, Program for Collaborative Research in the Pharmaceutical Sciences (PCRPS), and Department of Pharmaceutical Sciences, College of Pharmacy, University of Illinois at Chicago, Chicago, Illinois 60612, United States; [orcid.org/0000-0002-0739-9224](https://orcid.org/0000-0002-0739-9224)

**Jayne L. Dahlin** – Department of Pathology, Brigham and Women's Hospital, Boston, Massachusetts 02115, United States; Harvard Medical School, Boston, Massachusetts 02115, United States; [orcid.org/0000-0003-4151-9944](https://orcid.org/0000-0003-4151-9944)

**Matthias Niemitz** – NMR Solutions Ltd., 70110 Kuopio, Finland; [orcid.org/0000-0002-5452-5203](https://orcid.org/0000-0002-5452-5203)

**Michael A. Walters** – Department of Medicinal Chemistry, Institute for Therapeutics Discovery and Development, University of Minnesota, Minneapolis, Minnesota 55414, United States; [orcid.org/0000-0001-5650-9277](https://orcid.org/0000-0001-5650-9277)

Complete contact information is available at: <https://pubs.acs.org/doi/10.1021/acs.jmedchem.0c00724>

### Author Contributions

K.M.N., J.L.D., M.A.W., and G.F.P. designed the experiments. G.F.P., M.N., and J.L.D. performed the experiments. G.F.P., M.N., J.L.D., M.A.W., and K.M.N. provided key reagents,

supplies, or instrumentation. G.F.P., M.N., J.L.D., and M.A.W. analyzed the data. All authors contributed to the writing and revisions to the manuscript.

## Notes

The authors declare no competing financial interest.

## Biographies

**Kathryn M. Nelson** is a Research Assistant Professor in the Department of Medicinal Chemistry and Institute for Therapeutics Discovery & Development (ITDD) at the University of Minnesota, Minneapolis, MN. After obtaining a Ph.D. in Medicinal Chemistry from the University of Minnesota, she was a postdoctoral associate before becoming a Research Assistant Professor in Medicinal Chemistry at the ITDD. Her work has focused on target discovery, validation, and lead molecule development for new targets in neurodegenerative diseases. She has also expanded her expertise to the development of biomarker assays for new targets in anticipation of preclinical evaluation.

**Jonathan Bisson** obtained an M.S. degree in Structural Biochemistry and started his phytochemistry journey under the mentorship of Dr. Vincent Dumontet at the Institut de Chimie des Substances Naturelles, Gif-sur-Yvette, France. He then obtained a Ph.D. in Science, Technology and Health from the University of Bordeaux, France, under the mentorship of Dr. Pierre Waffo-Tégou, specializing in methodology at the chemistry–biology interface and practicing liquid–liquid chromatography, NMR spectroscopy, and hyphenated techniques. In 2013, he joined the University of Illinois at Chicago, where he is currently a Visiting Research Assistant Professor, developing software tools, ontologies, and preparative and analytical methods for natural products research in interdisciplinary programs.

**Gurpreet Singh** is a Senior Scientist at the Institute for Therapeutics Discovery and Development (ITDD) at the University of Minnesota (UMN), U.S. He received his Master's degree in Chemistry from Guru Nanak Dev University (GNDU) at Amritsar (India) and joined Dr. Reddy's Laboratories Limited at Hyderabad (India) as a medicinal chemist where he contributed to the anti-infective program. In 2015, he obtained his Ph.D. in Medicinal Chemistry from the University of Kansas (KU) at Lawrence, Kansas (U.S.). During his doctoral research, he developed alkaloid natural-product-inspired libraries for the discovery of biological probes, and synthetic routes for the synthesis of enantioenriched cyclic-1,3-diols. Currently his research is focused on the discovery of new chemical probes and drugs for neurodegenerative diseases.

**James G. Graham** is a Research Assistant Professor in the Department of Pharmaceutical Sciences at the University of Illinois at Chicago College of Pharmacy. After obtaining a Ph.D. in Pharmacognosy in Chicago, he received an NIH postdoctoral fellowship in Miami and worked as Technical Officer at the World Health Organization in Geneva. In 2007 he returned to Chicago to work as a protégé of Norman R. Farnsworth on his NAPRALERT (NATural PRoduct ALERT) database, of which he is currently editor, as well as serving as Assistant Program Director, Program for Collaborative Research in the Pharmaceutical Sciences.

**Shao-Nong Chen** obtained his Ph.D. in Organic Chemistry from Lanzhou University, then undertook two years of post-Ph.D. training at the Shanghai Institute of Materia Medica (SIMM) before joining Dr. Sydney Hecht's group at the University of Virginia in 1999 as a research fellow. He moved to UIC in 2000, where he currently is an Associate Research Professor, working on botanical standardization and integrity in the UIC/NIH Botanical Center, as well as on method development for the analysis of bioactive natural products in interdisciplinary programs. He developed “chemical subtraction”, NMR-based natural product mining methods, and “dynamic residual complexity” concepts. He coauthored 140+ peer-reviewed articles and two book chapters.

**J. Brent Friesen** is a professor of chemistry in the Rosary College of Arts and Sciences at Dominican University. He earned his Ph.D. in Natural Products Chemistry at the University of Minnesota with Eddie Leete. He is the author or coauthor of nearly 50 scientific publications. His role in the development of countercurrent separation methodologies and technologies has helped to revolutionize the practice of countercurrent separation. These methodologies include pioneering work in elution–extrusion countercurrent chromatography, reciprocal symmetry plots, the Generally Useful Estimation of Solvent Systems (GUESS), optimization of countercurrent separation parameters, and the development of the phase metering apparatus. Currently, he is involved with biomedical research that will advance the application of countercurrent separation technologies to improve the isolation and characterization of bioactive compounds.

**Jayme L. Dahlin** is currently a Clinical Fellow at Brigham and Women's Hospital and Harvard Medical School. He earned his B.A. (chemistry) from Carleton College (MN), his Ph.D. in Molecular Pharmacology and Experimental Therapeutics from Mayo Graduate School, and his M.D. from Mayo Medical School. He recently completed a clinical residency in clinical pathology at Brigham and Women's Hospital, where he also served as Chief Resident. He is now board-certified in clinical pathology and is currently performing chemical biology research in the laboratories of Stuart L. Schreiber and Bridget K. Wagner at the Broad Institute. His current research interests include high-throughput screening and assay development.

**Matthias Niemitz** is a serial entrepreneur with more than 25 years of experience in quantum mechanical NMR spectral analysis and received his chemistry degree at the Free University Berlin. He joined the NMR group at the University of Kuopio, Finland, and established the PERCH NMR Software project. In 2001 he incorporated PERCH Solutions, a company that was bought by Bruker BioSpin in 2009. After Bruker closed PERCH Solutions, the former management and employees of PERCH incorporated a new company, NMR Solutions.

**Michael A. Walters** is a Research Associate Professor of Medicinal Chemistry at the University of Minnesota (UMN). He began his academic career in the Department of Chemistry at Dartmouth College and then worked at Parke-Davis and Pfizer. He is currently the Director of the Lead and Probe Discovery Group in the Institute for Therapeutics Discovery and Development at the UMN. This institute serves as a minibiotech for the development of the ideas of biomedical researchers at the UMN and Mayo Clinic. His research interests currently focus on the investigation of compound reactivity as it applies to assay interference mechanisms, the development of Alzheimer's disease therapeutics, and cheminformatics and computer assisted drug design.

**Guido F. Pauli** is a pharmacist with a doctoral degree in natural products chemistry and pharmacognosy. As Norman R. Farnsworth Professor of Pharmacognosy and Distinguished Professor at UIC, Chicago (IL), he directs and collaborates in various interdisciplinary natural-product-driven research projects. He develops bioanalytical methodology for active principles from complex natural products from plant and microbial metabolomes, with applications in anti-TB drug discovery, dental health, dietary supplements, and pharmaceutical quality control. Scholarly activities involve the education of the next generation of pharma(cogno)sists; service on pharmacopoeial expert, federal agency, and NGO panels; journal board functions; international collaborations and exchange; and active dissemination with currently 230+ peer-reviewed journal articles.

## ■ ACKNOWLEDGMENTS

The  $K_i$  determinations, receptor binding profiles, agonist and/or antagonist functional data, HERG data, MDR1 data, etc. as appropriate were generously provided by the National Institute of Mental Health's Psychoactive Drug Screening Program, Contract HHSN-271-2018-00023-C (NIMH PDSP), directed by Dr. Bryan L. Roth at the University of North Carolina at Chapel Hill and Project Officer Jamie Driscoll at NIMH, Bethesda, MD, U.S. The authors acknowledge the following financial support: J.L.D. through Grant T32 HL007627 from NHLBI/NIH; J.B., J.G.G., S.-N.C., and G.F.P. through Grants U41 AT008706 and P50 AT000155 jointly from ODS/NIH and NCCIH/NIH. Furthermore, the authors acknowledge the collegial spirit of Drs. Young-Hae Choi and Rob Verpoorte, University of Leiden, for kindly sharing their historic raw NMR data. J.L.D. gratefully acknowledges Drs. Parnian Lak and Brian Shoichet for performing DLS experiments. We kindly acknowledge the Research Open Access Publishing (ROAAP) Fund of the University of Illinois at Chicago for financial support towards the open access publishing fee for this article. Finally, the authors thank M. Backmann for help in creating the figure for the graphical abstract. The funders had no role in study design, data collection and analysis, decision to publish, or preparation of the manuscript. The opinions or assertions contained herein belong to the authors and are not necessarily the official views of the funders.

## ■ ABBREVIATIONS USED

CBD, cannabidiol; DDI, drug–drug interaction; DHI, drug–herbal interaction; FDA, Food and Drug Administration; HiFSA,  $^1\text{H}$  iterative full spin analysis; IMP, invalid metabolic panacea; OTC, over-the-counter; THC,  $\Delta^9$ -tetrahydrocannabinol

## ■ REFERENCES

- (1) Cannabidiol Market Size Analysis. CBD Industry Growth Report, 2025. <https://www.grandviewresearch.com/industry-analysis/cannabidiol-cbd-market> (accessed Apr 22, 2020).
- (2) Dorbian, I. CBD Market Could Reach \$20 Billion By 2024, Says New Study. *Forbes* May 20, 2019.
- (3) Nelson, K. M.; Dahlin, J. L.; Bisson, J.; Graham, J.; Pauli, G. F.; Walters, M. A. The Essential Medicinal Chemistry of Curcumin. *J. Med. Chem.* **2017**, 60 (5), 1620–1637.
- (4) Dietz, B. M.; Chen, S.-N.; Alvarenga, R. F. R.; Dong, H.; Nikolić, D.; Biendl, M.; van Breemen, R. B.; Bolton, J. L.; Pauli, G. F. DESIGNER Extracts as Tools to Balance Estrogenic and Chemopreventive Activities of Botanicals for Women's Health. *J. Nat. Prod.* **2017**, 80, 2284–2294.
- (5) Yang, Y.; Zhang, Z.; Li, S.; Ye, X.; Li, X.; He, K. Synergy Effects of Herb Extracts: Pharmacokinetics and Pharmacodynamic Basis. *Fitoterapia* **2014**, 92, 133–147.
- (6) Caesar, L. K.; Cech, N. B. Synergy and Antagonism in Natural Product Extracts: When 1 + 1 Does Not Equal 2. *Nat. Prod. Rep.* **2019**, 36, 869–888.
- (7) Friesen, J. B.; Liu, Y.; Chen, S.-N.; McAlpine, J. B.; Pauli, G. F. Selective Depletion and Enrichment of Constituents in "Curcumin" and Other *Curcuma longa* Preparations. *J. Nat. Prod.* **2019**, 82, 621–630.
- (8) Zuardi, A. W.; Crippa, J. A. S.; Hallak, J. E. C.; Moreira, F. A.; Guimarães, F. S. Cannabidiol, a *Cannabis sativa* Constituent, as an Antipsychotic Drug. *Braz. J. Med. Biol. Res.* **2006**, 39, 421–429.
- (9) Mogil, J. S. Laboratory Environmental Factors and Pain Behavior: The Relevance of Unknown Unknowns to Reproducibility and Translation. *Lab Anim.* **2017**, 46, 136–141.
- (10) Morrison, G.; Crockett, J.; Blakey, G.; Sommerville, K. A Phase 1, Open-Label, Pharmacokinetic Trial to Investigate Possible Drug-Drug Interactions Between Clobazam, Stiripentol, or Valproate and Cannabidiol in Healthy Subjects. *Clin. Pharmacol. Drug Dev.* **2019**, 8, 1009–1031.
- (11) Ghovanloo, M.-R.; Stuart, N. G.; Mezeyova, J.; Dean, R. A.; Ruben, P. C.; Goodchild, S. J. Inhibitory Effects of Cannabidiol on Voltage-Dependent Sodium Currents. *J. Biol. Chem.* **2018**, 293, 16546–16558.
- (12) Watkins, A. R. Cannabinoid Interactions with Ion Channels and Receptors. *Channels* **2019**, 13, 162–167.
- (13) Gertsch, J. The Intricate Influence of the Placebo Effect on Medical Cannabis and Cannabinoids. *Med. Cannabis Cannabinoids* **2018**, 1, 60–64.
- (14) WHO CBD Report May 2018. Cannabidiol (CBD). Critical Review Report. <https://www.who.int/medicines/access/controlled-substances/WHOCBDReportMay2018-2.pdf?ua=1> (accessed Oct 25, 2019).
- (15) Millar, S. A.; Stone, N. L.; Yates, A. S.; O'Sullivan, S. E. A Systematic Review on the Pharmacokinetics of Cannabidiol in Humans. *Front. Pharmacol.* **2018**, 9, 1365.
- (16) Office of the Commissioner. What to Know About Products Containing Cannabis and CBD. <https://www.fda.gov/consumers/consumer-updates/what-you-need-know-and-what-were-working-find-out-about-products-containing-cannabis-or-cannabis> (accessed Apr 23, 2020).
- (17) Gaoni, Y.; Mechoulam, R. Hashish—VII: The Isomerization of Cannabidiol to Tetrahydrocannabinols. *Tetrahedron* **1966**, 22, 1481–1488.
- (18) Gutman, A. L.; Etinger, M.; Fedotov, I.; Khanolkar, R. Methods for Purifying Trans-(–)- $\Delta^9$ -Tetrahydrocannabinol and Trans-(+)- $\Delta^9$ -Tetrahydrocannabinol. U.S. Patent 8383842, 2006.
- (19) Aizpurua-Olaizola, O.; Soydaner, U.; Öztürk, E.; Schibano, D.; Simsir, Y.; Navarro, P.; Etxebarria, N.; Usobiaga, A. Evolution of the Cannabinoid and Terpene Content during the Growth of *Cannabis sativa* Plants from Different Chemotypes. *J. Nat. Prod.* **2016**, 79, 324–331.
- (20) Basas-Jaumandreu, J.; de Las Heras, F. X. C. GC-MS Metabolite Profile and Identification of Unusual Homologous Cannabinoids in High Potency *Cannabis sativa*. *Planta Med.* **2020**, 86, 338–347.
- (21) Luo, X.; Reiter, M. A.; d'Espaux, L.; Wong, J.; Denby, C. M.; Lechner, A.; Zhang, Y.; Grzybowski, A. T.; Harth, S.; Lin, W.; Lee, H.; Yu, C.; Shin, J.; Deng, K.; Benites, V. T.; Wang, G.; Baidoo, E. E. K.; Chen, Y.; Dev, I.; Petzold, C. J.; Keasling, J. D. Complete Biosynthesis of Cannabinoids and Their Unnatural Analogues in Yeast. *Nature* **2019**, 567, 123–126.
- (22) Kumari, S.; Pundhir, S.; Priya, P.; Jeena, G.; Punetha, A.; Chawla, K.; Firdos Jafaree, Z.; Mondal, S.; Yadav, G. EssOilDB: A Database of Essential Oils Reflecting Terpene Composition and Variability in the Plant Kingdom. *Database* **2014**, 2014, No. bau120.
- (23) Degenhardt, F.; Stehle, F.; Kayser, O. The Biosynthesis of Cannabinoids. In *Handbook of Cannabis and Related Pathologies. Biology, Pharmacology, Diagnosis, and Treatment*; Preedy, V. R., Ed.; Elsevier: London, 2017; pp 13–23.
- (24) Pauli, G. F.; Chen, S.-N.; Simmler, C.; Lankin, D. C.; Gödecke, T.; Jaki, B. U.; Friesen, J. B.; McAlpine, J. B.; Napolitano, J. G. Importance of Purity Evaluation and the Potential of Quantitative  $^1\text{H}$  NMR as a Purity Assay. *J. Med. Chem.* **2014**, 57, 9220–9231.
- (25) Martin Emanuele, R.; Shattock-Gordon, T.; Williford, T.; Andres, M.; Andres, P. New Solid Forms of Cannabidiol and Uses Thereof. World Intellectual Property Organization. WO 2019118360 A1, 2019.
- (26) Mechoulam, R.; Hanuš, L. Cannabidiol: An Overview of Some Chemical and Pharmacological Aspects. Part I: Chemical Aspects. *Chem. Phys. Lipids* **2002**, 121, 35–43.
- (27) Popovic, A.; Morelato, M.; Roux, C.; Beavis, A. Review of the Most Common Chemometric Techniques in Illicit Drug Profiling. *Forensic Sci. Int.* **2019**, 302, 109911.



- (28) O'Neil, M. J. *The Merck Index: An Encyclopedia of Chemicals, Drugs, and Biologicals*; Royal Society of Chemistry: Cambridge, U.K., 2013; 2707.
- (29) Pauli, G. F.; Gödecke, T.; Jaki, B. U.; Lankin, D. C. Quantitative  $^1\text{H}$  NMR. Development and Potential of an Analytical Method: An Update. *J. Nat. Prod.* **2012**, *75*, 834–851.
- (30) Hazekamp, A.; Choi, Y. H.; Verpoorte, R. Quantitative Analysis of Cannabinoids from *Cannabis sativa* Using  $^1\text{H}$ -NMR. *Chem. Pharm. Bull.* **2004**, *52*, 718–721.
- (31) Siciliano, C.; Bartella, L.; Mazzotti, F.; Aiello, D.; Napoli, A.; De Luca, P.; Temperini, A.  $^1\text{H}$  NMR Quantification of Cannabidiol (CBD) in Industrial Products Derived from *Cannabis sativa* L. (hemp) Seeds - IOPscience. *IOP Conf. Ser.: Mater. Sci. Eng.* **2019**, *572*, 012010.
- (32) Choules, M. P.; Bisson, J.; Simmler, C.; McAlpine, J. B.; Giancaspro, G.; Bzhelyansky, A.; Niemitz, M.; Pauli, G. F. NMR Reveals an Undeclared Constituent in Custom Synthetic Peptides. *J. Pharm. Biomed. Anal.* **2020**, *178*, 112915.
- (33) Bisson, J.; Simmler, C.; Chen, S.-N.; Friesen, J. B.; Lankin, D. C.; McAlpine, J. B.; Pauli, G. F. Dissemination of Original NMR Data Enhances Reproducibility and Integrity in Chemical Research. *Nat. Prod. Rep.* **2016**, *33*, 1028–1033.
- (34) McAlpine, J. B.; Chen, S.-N.; Kutateladze, A.; MacMillan, J. B.; Appendino, G.; Barison, A.; Benidder, M. A.; Biavatti, M. W.; Blüml, S.; Bouffridi, A.; Butler, M. S.; Capon, R. J.; Choi, Y. H.; Coppage, D.; Crews, P.; Crimmins, M. T.; Csete, M.; Dewapriya, P.; Egan, J. M.; Garson, M. J.; Genta-Jouve, G.; Gerwick, W. H.; Gross, H.; Harper, M. K.; Hermanto, P.; Hook, J. M.; Hunter, L.; Jeannerat, D.; Ji, N.-Y.; Johnson, T. A.; Kingston, D. G. I.; Koshino, H.; Lee, H.-W.; Lewin, G.; Li, J.; Linington, R. G.; Liu, M.; McPhail, K. L.; Molinski, T. F.; Moore, B. S.; Nam, J.-W.; Neupane, R. P.; Niemitz, M.; Nuzillard, J.-M.; Oberlies, N. H.; Ocampos, F. M. M.; Pan, G.; Quinn, R. J.; Reddy, D. S.; Renault, J.-H.; Rivera-Chávez, J.; Robien, W.; Saunders, C. M.; Schmidt, T. J.; Seger, C.; Shen, B.; Steinbeck, C.; Stuppner, H.; Sturm, S.; Tagliatalata-Scafati, O.; Tantillo, D. J.; Verpoorte, R.; Wang, B.-G.; Williams, C. M.; Williams, P. G.; Wist, J.; Yue, J.-M.; Zhang, C.; Xu, Z.; Simmler, C.; Lankin, D. C.; Bisson, J.; Pauli, G. F. The Value of Universally Available Raw NMR Data for Transparency, Reproducibility, and Integrity in Natural Product Research. *Nat. Prod. Rep.* **2019**, *36*, 35–107.
- (35) Choules, M. P.; Klein, L. L.; Lankin, D. C.; McAlpine, J. B.; Cho, S.-H.; Cheng, J.; Lee, H.; Suh, J.-W.; Jaki, B. U.; Franzblau, S. G.; Pauli, G. F. Residual Complexity Does Impact Organic Chemistry and Drug Discovery: The Case of Rufomyazine and Rufomycin. *J. Org. Chem.* **2018**, *83*, 6664–6672.
- (36) Pauli, G. F.; Chen, S.-N.; Friesen, J. B.; McAlpine, J. B.; Jaki, B. U. Analysis and Purification of Bioactive Natural Products: The AnaPurNa Study. *J. Nat. Prod.* **2012**, *75*, 1243–1255.
- (37) Citti, C.; Linciano, P.; Forni, F.; Vandelli, M. A.; Gigli, G.; Laganà, A.; Cannazza, G. Analysis of Impurities of Cannabidiol from Hemp. Isolation, Characterization and Synthesis of Cannabidibutol, the Novel Cannabidiol Butyl Analog. *J. Pharm. Biomed. Anal.* **2019**, *175*, 112752.
- (38) Freeman, T. P.; Hindocha, C.; Green, S. F.; Bloomfield, M. A. P. Medicinal Use of Cannabis Based Products and Cannabinoids. *BMJ.* **2019**, *365*, No. 11141.
- (39) Office of the Commissioner. FDA Regulation of Cannabis and Cannabis-Derived Products: Q&A. <https://www.fda.gov/news-events/public-health-focus/fda-regulation-cannabis-and-cannabis-derived-products-including-cannabidiol-cbd> (accessed Apr 22, 2020).
- (40) Office of the Commissioner. FDA and Cannabis: Research and Drug Approval Process. <https://www.fda.gov/news-events/public-health-focus/fda-and-cannabis-research-and-drug-approval-process> (accessed Apr 22, 2020).
- (41) Biosciences, G. EPIDIOLEX (cannabidiol) oral solution, CV prescribing information; revised 12/2018. [https://www.accessdata.fda.gov/drugsatfda\\_docs/label/2018/210365lbl.pdf](https://www.accessdata.fda.gov/drugsatfda_docs/label/2018/210365lbl.pdf) (accessed Dec 19, 2019).
- (42) Office of the Commissioner. Warning Letters and Test Results for Cannabidiol-Related Products. <https://www.fda.gov/news-events/public-health-focus/warning-letters-and-test-results-cannabidiol-related-products> (accessed Apr 27, 2020).
- (43) Jacob, A.; Todd, A. R. 119. Cannabis Indica. Part II. Isolation of Cannabidiol from Egyptian Hashish. Observations on the Structure of Cannabinol. *J. Chem. Soc.* **1940**, 649–653.
- (44) Adams, R.; Baker, B. R.; Wearn, R. B. Structure of Cannabinol. III. Synthesis of Cannabinol, 1-Hydroxy-3-N-Amyl-6,6,9-Trimethyl-6-dibenzopyran. *J. Am. Chem. Soc.* **1940**, *62*, 2204–2207.
- (45) Jones, P. G.; Falvello, L.; Kennard, O.; Sheldrick, G. M.; Mechoulam, R. Cannabidiol. *Acta Crystallogr., Sect. B: Struct. Crystallogr. Cryst. Chem.* **1977**, *33*, 3211–3214.
- (46) Pacifici, R.; Marchei, E.; Salvatore, F.; Guandalini, L.; Busardò, F. P.; Pichini, S. Evaluation of Cannabinoids Concentration and Stability in Standardized Preparations of Cannabis Tea and Cannabis Oil by Ultra-High Performance Liquid Chromatography Tandem Mass Spectrometry. *Clin. Chem. Lab. Med.* **2017**, *55*, 1555–1563.
- (47) Watanabe, K.; Usami, N.; Yamamoto, I.; Yoshimura, H. Inhibitory Effect of Cannabidiol Hydroxy-Quinone, an Oxidative Product of Cannabidiol, on the Hepatic Microsomal Drug-Metabolizing Enzymes of Mice. *J. Pharmacobio-Dyn.* **1991**, *14*, 421–427.
- (48) Webster, G. R. B.; Sarna, L. P.; Mechoulam, R. Conversion of CBD to Delta8-THC and Delta9-THC. United States Patent 2004/0143126 A1, 2004.
- (49) Merrick, J.; Lane, B.; Seabee, T.; Yaksh, T.; O'Neill, C.; Banks, S. L. Identification of Psychoactive Degradants of Cannabidiol in Simulated Gastric and Physiological Fluid. *Cannabis Cannabinoid Res.* **2016**, *1*, 102–112.
- (50) Nahler, G.; Grotenhermen, F.; Zuardi, A. W.; Crippa, J. A. S. A Conversion of Oral Cannabidiol to Delta9-Tetrahydrocannabinol Seems Not to Occur in Humans. *Cannabis Cannabinoid Res.* **2017**, *2*, 81–86.
- (51) Watanabe, K.; Itokawa, Y.; Yamaori, S.; Funahashi, T.; Kimura, T.; Kaji, T.; Usami, N.; Yamamoto, I. Conversion of Cannabidiol to  $\Delta^9$ -Tetrahydrocannabinol and Related Cannabinoids in Artificial Gastric Juice, and Their Pharmacological Effects in Mice. *Forensic Toxicol.* **2007**, *25*, 16–21.
- (52) Grotenhermen, F.; Russo, E.; Zuardi, A. W. Even High Doses of Oral Cannabidiol Do Not Cause THC-Like Effects in Humans: Comment on Merrick et al. Cannabis and Cannabinoid Research 2016; 1(1): 102–112; DOI: 10.1089/can.2015.0004. *Cannabis Cannabinoid Res.* **2017**, *2*, 1–4.
- (53) Lachenmeier, D. W.; Habel, S.; Fischer, B.; Herbi, F.; Zerbe, Y.; Bock, V.; Rajcic de Rezende, T.; Walch, S. G.; Sproll, C. Are Side Effects of Cannabidiol (CBD) Products Caused by Tetrahydrocannabinol (THC) Contamination? *F1000Research* **2019**, *8*, 1394.
- (54) Mascal, M.; Hafezi, N.; Wang, D.; Hu, Y.; Serra, G.; Dallas, M. L.; Spencer, J. P. E. Synthetic, Non-Intoxicating 8,9-Dihydrocannabidiol for the Mitigation of Seizures. *Sci. Rep.* **2019**, *9*, 7778.
- (55) Ben-Shabat, S.; Hanus, L. O.; Katzavian, G.; Gallily, R. New Cannabidiol Derivatives: Synthesis, Binding to Cannabinoid Receptor, and Evaluation of Their Antiinflammatory Activity. *J. Med. Chem.* **2006**, *49*, 1113–1117.
- (56) Bisogno, T.; Hanus, L.; De Petrocellis, L.; Tchilibon, S.; Ponde, D. E.; Brandi, I.; Moriello, A. S.; Davis, J. B.; Mechoulam, R.; Di Marzo, V. Molecular Targets for Cannabidiol and Its Synthetic Analogues: Effect on Vanilloid VR1 Receptors and on the Cellular Uptake and Enzymatic Hydrolysis of Anandamide. *Br. J. Pharmacol.* **2001**, *134*, 845–852.
- (57) Hanus, L. O.; Tchilibon, S.; Ponde, D. E.; Breuer, A.; Frider, E.; Mechoulam, R. Enantiomeric Cannabidiol Derivatives: Synthesis and Binding to Cannabinoid Receptors. *Org. Biomol. Chem.* **2005**, *3* (6), 1116–1123.
- (58) Little, P. J.; Compton, D. R.; Johnson, M. R.; Melvin, L. S.; Martin, B. R. Pharmacology and Stereoselectivity of Structurally Novel Cannabinoids in Mice. *J. Pharmacol. Exp. Ther.* **1988**, *247*, 1046–1051.
- (59) Kinney, W. A.; McDonnell, M. E.; Zhong, H. M.; Liu, C.; Yang, L.; Ling, W.; Qian, T.; Chen, Y.; Cai, Z.; Petkanas, D.; Brennehan, D. E. Discovery of KLS-13019, a Cannabidiol-Derived Neuroprotective



Agent, with Improved Potency, Safety, and Permeability. *ACS Med. Chem. Lett.* **2016**, *7*, 424–428.

(60) BioSpace. Kannalife, Inc. Further Elucidates Mechanism of Action Behind KLS-13019, the Company's Leading Drug Candidate for the Potential Treatment of Neuropathic Pain. BioSpace. <https://www.biospace.com/article/kannalife-inc-further-elucidates-mechanism-of-action-behind-cls-13019-the-company-s-leading-drug-candidate-for-the-potential-treatment-of-neuropathic-pain/> (accessed Apr 27, 2020).

(61) Johns, D. G.; Behm, D. J.; Walker, D. J.; Ao, Z.; Shapland, E. M.; Daniels, D. A.; Riddick, M.; Dowell, S.; Staton, P. C.; Green, P.; Shabon, U.; Bao, W.; Aiyar, N.; Yue, T.-L.; Brown, A. J.; Morrison, A. D.; Douglas, S. A. The Novel Endocannabinoid Receptor GPR55 Is Activated by Atypical Cannabinoids but Does Not Mediate Their Vasodilator Effects. *Br. J. Pharmacol.* **2007**, *152*, 825–831.

(62) Ryberg, E.; Larsson, N.; Sjögren, S.; Hjorth, S.; Hermansson, N.-O.; Leonova, J.; Elebring, T.; Nilsson, K.; Drmota, T.; Greasley, P. J. The Orphan Receptor GPR55 Is a Novel Cannabinoid Receptor. *Br. J. Pharmacol.* **2007**, *152*, 1092–1101.

(63) Romero-Zerbo, S. Y.; Rafacho, A.; Díaz-Arteaga, A.; Suárez, J.; Quesada, I.; Imbernon, M.; Ross, R. A.; Dieguez, C.; Rodríguez de Fonseca, F.; Nogueiras, R.; Nadal, A.; Bermúdez-Silva, F. J. A Role for the Putative Cannabinoid Receptor GPR55 in the Islets of Langerhans. *J. Endocrinol.* **2011**, *211*, 177–185.

(64) Console-Bram, L.; Brailoiu, E.; Brailoiu, G. C.; Sharir, H.; Abood, M. E. Activation of GPR18 by Cannabinoid Compounds: A Tale of Biased Agonism. *Br. J. Pharmacol.* **2014**, *171*, 3908–3917.

(65) Morales, P.; Reggio, P. H. CBD: A New Hope? *ACS Med. Chem. Lett.* **2019**, *10*, 694–695.

(66) Pertwee, R. G. Pharmacological and Therapeutic Targets for  $\Delta^9$  Tetrahydrocannabinol and Cannabidiol. *Euphytica* **2004**, *140*, 73–82.

(67) Morales, P.; Hurst, D. P.; Reggio, P. H. Molecular Targets of the Phytocannabinoids: A Complex Picture. *Prog. Chem. Org. Nat. Prod.* **2017**, *103*, 103–131.

(68) Brzozowska, N.; Li, K. M.; Wang, X. S.; Booth, J.; Stuart, J.; McGregor, I. S.; Arnold, J. C. ABC Transporters P-Gp and Bcrp Do Not Limit the Brain Uptake of the Novel Antipsychotic and Anticonvulsant Drug Cannabidiol in Mice. *PeerJ* **2016**, *4*, No. e2081.

(69) Kathmann, M.; Flau, K.; Redmer, A.; Tränkle, C.; Schlicker, E. Cannabidiol Is an Allosteric Modulator at Mu- and Delta-Opioid Receptors. *Naunyn-Schmiedeberg's Arch. Pharmacol.* **2006**, *372*, 354–361.

(70) Russo, E. B.; Burnett, A.; Hall, B.; Parker, K. K. Agonistic Properties of Cannabidiol at 5-HT<sub>1A</sub> Receptors. *Neurochem. Res.* **2005**, *30*, 1037–1043.

(71) Chen, G.; Chen, Y.; Yang, N.; Zhu, X.; Sun, L.; Li, G. Interaction between Curcumin and Mimetic Biomembrane. *Sci. China: Life Sci.* **2012**, *55*, 527–532.

(72) Ingólfsson, H. I.; Thakur, P.; Herold, K. F.; Hobart, E. A.; Ramsey, N. B.; Periole, X.; de Jong, D. H.; Zwama, M.; Yilmaz, D.; Hall, K.; Maretzky, T.; Hemmings, H. C., Jr.; Blobel, C.; Marrink, S. J.; Koçer, A.; Sack, J. T.; Andersen, O. S. Phytochemicals Perturb Membranes and Promiscuously Alter Protein Function. *ACS Chem. Biol.* **2014**, *9*, 1788–1798.

(73) Showalter, V. M.; Compton, D. R.; Martin, B. R.; Abood, M. E. Evaluation of Binding in a Transfected Cell Line Expressing a Peripheral Cannabinoid Receptor (CB<sub>2</sub>): Identification of Cannabinoid Receptor Subtype Selective Ligands. *J. Pharmacol. Exp. Ther.* **1996**, *278*, 989–999.

(74) Watkinson, A.; Chapman, S. C. E.; Horne, R. Beliefs About Pharmaceutical Medicines and Natural Remedies Explain Individual Variation in Placebo Analgesia. *J. Pain* **2017**, *18* (8), 908–922.

(75) Trainor, G. L. Plasma Protein Binding and the Free Drug Principle: Recent Developments and Applications. In *Annual Reports in Medicinal Chemistry*; Macor, J. E., Ed.; Academic Press: San Diego, CA, 2007; Vol. 42, Chapter 31, pp 489–502.

(76) Tayo, B.; Taylor, L.; Sahebkar, F.; Morrison, G. A Phase I, Open-Label, Parallel-Group, Single-Dose Trial of the Pharmacokinetics, Safety, and Tolerability of Cannabidiol in Subjects with Mild to Severe Renal Impairment. *Clin. Pharmacokinet.* **2020**, *59*, 747–755.

(77) Liu, X.; Wright, M.; Hop, C. E. C. A. Rational Use of Plasma Protein and Tissue Binding Data in Drug Design. *J. Med. Chem.* **2014**, *57*, 8238–8248.

(78) Wheless, J. W.; Dlugos, D.; Miller, I.; Oh, D. A.; Parikh, N.; Phillips, S.; Renfro, J. B.; Roberts, C. M.; Saeed, I.; Sparagana, S. P.; Yu, J.; Cilio, M. R. INS011-14-029 Study Investigators. Pharmacokinetics and Tolerability of Multiple Doses of Pharmaceutical-Grade Synthetic Cannabidiol in Pediatric Patients with Treatment-Resistant Epilepsy. *CNS Drugs* **2019**, *33*, 593–604.

(79) Geffrey, A. L.; Pollack, S. F.; Bruno, P. L.; Thiele, E. A. Drug-Drug Interaction between Clobazam and Cannabidiol in Children with Refractory Epilepsy. *Epilepsia* **2015**, *56*, 1246–1251.

(80) Bergmann, K. R.; Broekhuizen, K.; Groeneveld, G. J. Clinical Trial Simulations of the Interaction between Cannabidiol and Clobazam and Effect on Drop-Seizure Frequency. *Br. J. Clin. Pharmacol.* **2020**, *86*, 380–385.

(81) Huddart, R.; Leeder, J. S.; Altman, R. B.; Klein, T. E. PharmGKB Summary: Clobazam Pathway, Pharmacokinetics. *Pharmacogenet. Genomics* **2018**, *28*, 110–115.

(82) Calculation of Molecular Properties and Bioactivity Core. <https://www.molinspiration.com/cgi-bin/properties> (accessed Jul 4, 2020).

(83) Thorne, N.; Auld, D. S.; Inglese, J. Apparent Activity in High-Throughput Screening: Origins of Compound-Dependent Assay Interference. *Curr. Opin. Chem. Biol.* **2010**, *14*, 315–324.

(84) Elbaz, M.; Nasser, M. W.; Ravi, J.; Wani, N. A.; Ahirwar, D. K.; Zhao, H.; Oghumu, S.; Satoskar, A. R.; Shilo, K.; Carson, W. E., 3rd; Ganju, R. K. Modulation of the Tumor Microenvironment and Inhibition of EGF/EGFR Pathway: Novel Anti-Tumor Mechanisms of Cannabidiol in Breast Cancer. *Mol. Oncol.* **2015**, *9*, 906–919.

(85) Solinas, M.; Massi, P.; Cantelmo, A. R.; Cattaneo, M. G.; Cammarota, R.; Bartolini, D.; Cinquina, V.; Valenti, M.; Vicentini, L. M.; Noonan, D. M.; Albini, A.; Parolaro, D. Cannabidiol Inhibits Angiogenesis by Multiple Mechanisms. *Br. J. Pharmacol.* **2012**, *167*, 1218–1231.

(86) Ohlsson, A.; Lindgren, J. E.; Andersson, S.; Agurell, S.; Gillespie, H.; Hollister, L. E. Single-Dose Kinetics of Deuterium-Labelled Cannabidiol in Man after Smoking and Intravenous Administration. *Biol. Mass Spectrom.* **1986**, *13*, 77–83.

(87) Samara, E.; Bialer, M.; Mechoulam, R. Pharmacokinetics of Cannabidiol in Dogs. *Drug Metab. Dispos.* **1988**, *16*, 469–472.

(88) Stott, C. G.; White, L.; Wright, S.; Wilbraham, D.; Guy, G. W. A Phase I Study to Assess the Single and Multiple Dose Pharmacokinetics of THC/CBD Oromucosal Spray. *Eur. J. Clin. Pharmacol.* **2013**, *69*, 1135–1147.

(89) Deiana, S.; Watanabe, A.; Yamasaki, Y.; Amada, N.; Arthur, M.; Fleming, S.; Woodcock, H.; Dorward, P.; Pigliacampo, B.; Close, S.; Platt, B.; Riedel, G. Plasma and Brain Pharmacokinetic Profile of Cannabidiol (CBD), Cannabidiol (CBDV),  $\Delta^9$ -Tetrahydrocannabinol (THCV) and Cannabigerol (CBG) in Rats and Mice Following Oral and Intraperitoneal Administration and CBD Action on Obsessive-Compulsive Behaviour. *Psychopharmacology* **2012**, *219*, 859–873.

(90) Huestis, M. A. Pharmacokinetics and Metabolism of the Plant Cannabinoids,  $\Delta^9$ -Tetrahydrocannabinol, Cannabidiol and Cannabinol. In *Cannabinoids*; Pertwee, R. G., Ed.; Springer: Berlin, 2005; pp 657–690.

(91) Jiang, R.; Yamaori, S.; Takeda, S.; Yamamoto, I.; Watanabe, K. Identification of Cytochrome P450 Enzymes Responsible for Metabolism of Cannabidiol by Human Liver Microsomes. *Life Sci.* **2011**, *89*, 165–170.

(92) Ujváry, I.; Hanuš, L. Human Metabolites of Cannabidiol: A Review on Their Formation, Biological Activity, and Relevance in Therapy. *Cannabis Cannabinoid Res.* **2016**, *1*, 90–101.

(93) Taylor, L.; Gidal, B.; Blakey, G.; Tayo, B.; Morrison, G. A Phase I, Randomized, Double-Blind, Placebo-Controlled, Single Ascending Dose, Multiple Dose, and Food Effect Trial of the Safety, Tolerability and Pharmacokinetics of Highly Purified Cannabidiol in Healthy Subjects. *CNS Drugs* **2018**, *32*, 1053–1067.

- (94) Harvey, D. J.; Mechoulam, R. Metabolites of Cannabidiol Identified in Human Urine. *Xenobiotica* **1990**, *20*, 303–320.
- (95) Watanabe, K.; Usami, N.; Osada, S.; Narimatsu, S.; Yamamoto, I.; Yoshimura, H. Cannabidiol Metabolism Revisited: Tentative Identification of Novel Decarboxylated Metabolites of Cannabidiol Formed by Human Liver Microsomes and Recombinant Cytochrome P450 3A4. *Forensic Toxicol.* **2019**, *37*, 449–455.
- (96) Harvey, D. J.; Samara, E.; Mechoulam, R. Urinary Metabolites of Cannabidiol in Dog, Rat and Man and Their Identification by Gas Chromatography-Mass Spectrometry. *J. Chromatogr., Biomed. Appl.* **1991**, *562*, 299–322.
- (97) Wray, L.; Stott, C.; Jones, N.; Wright, S. Cannabidiol Does Not Convert to  $\Delta^9$ -Tetrahydrocannabinol in an In Vivo Animal Model. *Cannabis Cannabinoid Res.* **2017**, *2*, 282–287.
- (98) Palazzoli, F.; Citti, C.; Licata, M.; Vilella, A.; Manca, L.; Zoli, M.; Vandelli, M. A.; Forni, F.; Cannazza, G. Development of a Simple and Sensitive Liquid Chromatography Triple Quadrupole Mass Spectrometry (LC-MS/MS) Method for the Determination of Cannabidiol (CBD),  $\Delta^9$ -Tetrahydrocannabinol (THC) and Its Metabolites in Rat Whole Blood after Oral Administration of a Single High Dose of CBD. *J. Pharm. Biomed. Anal.* **2018**, *150*, 25–32.
- (99) Guy, G. W.; Flint, M. E. A Single Centre, Placebo-Controlled, Four Period, Crossover, Tolerability Study Assessing, Pharmacodynamic Effects, Pharmacokinetic Characteristics and Cognitive Profiles of a Single Dose of Three Formulations of Cannabis Based Medicine Extracts (CBMEs) (GWPD9901), Plus a Two Period Tolerability Study Comparing Pharmacodynamic Effects and Pharmacokinetic Characteristics of a Single Dose of a Cannabis Based Medicine Extract Given via Two Administration Routes (GWPD9901 EXT). *J. Cannabis Ther.* **2004**, *3*, 35–77.
- (100) Atsmon, J.; Cherniakov, I.; Izgelov, D.; Hoffman, A.; Domb, A. J.; Deutsch, L.; Deutsch, F.; Heffetz, D.; Sacks, H. PTL401, a New Formulation Based on Pro-Nano Dispersion Technology, Improves Oral Cannabinoids Bioavailability in Healthy Volunteers. *J. Pharm. Sci.* **2018**, *107*, 1423–1429.
- (101) Consroe, P.; Kennedy, K.; Schram, K. Assay of Plasma Cannabidiol by Capillary Gas Chromatography/ion Trap Mass Spectroscopy Following High-Dose Repeated Daily Oral Administration in Humans. *Pharmacol., Biochem. Behav.* **1991**, *40*, 517–522.
- (102) Wall, M. E.; Brine, D. R.; Perez-Reyes, M. Metabolism of Cannabinoids in Man. In *The Pharmacology of Marihuana*; Braude, M. C., Szara, S., Eds.; Raven Press: New York, 1976; pp 93–113.
- (103) Stott, C. G.; White, L.; Wright, S.; Wilbraham, D.; Guy, G. W. A Phase I Study to Assess the Effect of Food on the Single Dose Bioavailability of the THC/CBD Oromucosal Spray. *Eur. J. Clin. Pharmacol.* **2013**, *69*, 825–834.
- (104) Stout, S. M.; Cimino, N. M. Exogenous Cannabinoids as Substrates, Inhibitors, and Inducers of Human Drug Metabolizing Enzymes: A Systematic Review. *Drug Metab. Rev.* **2014**, *46* (1), 86–95.
- (105) Zendulka, O.; Dovrtělová, G.; Nosková, K.; Turjap, M.; Šulcová, A.; Hanuš, L.; Juřica, J. Cannabinoids and Cytochrome P450 Interactions. *Curr. Drug Metab.* **2016**, *17*, 206–226.
- (106) Benowitz, N. L.; Nguyen, T. L.; Jones, R. T.; Herning, R. I.; Bachman, J. Metabolic and Psychophysiological Studies of Cannabidiol-Hexobarbital Interaction. *Clin. Pharmacol. Ther.* **1980**, *28*, 115–120.
- (107) Garberg, H. T.; Solberg, R.; Barlinn, J.; Martinez-Orgado, J.; Löberg, E.-M.; Saugstad, O. D. High-Dose Cannabidiol Induced Hypotension after Global Hypoxia-Ischemia in Piglets. *Neonatology* **2017**, *112*, 143–149.
- (108) Murphy, S. K.; Itchon-Ramos, N.; Visco, Z.; Huang, Z.; Grenier, C.; Schrott, R.; Acharya, K.; Boudreau, M.-H.; Price, T. M.; Raburn, D. J.; Corcoran, D. L.; Lucas, J. E.; Mitchell, J. T.; McClernon, F. J.; Cauley, M.; Hall, B. J.; Levin, E. D.; Kollins, S. H. Cannabinoid Exposure and Altered DNA Methylation in Rat and Human Sperm. *Epigenetics* **2018**, *13*, 1208–1221.
- (109) Reece, A. S.; Hulse, G. K. Impacts of Cannabinoid Epigenetics on Human Development: Reflections on Murphy et al. 'Cannabinoid Exposure and Altered DNA Methylation in Rat and Human Sperm Epigenetics 2018; 13: 1208-1221'. *Epigenetics* **2019**, *14*, 1041–1056.
- (110) Carvalho, R. K.; Santos, M. L.; Souza, M. R.; Rocha, T. L.; Guimarães, F. S.; Anselmo-Franci, J. A.; Mazaro-Costa, R. Chronic Exposure to Cannabidiol Induces Reproductive Toxicity in Male Swiss Mice. *J. Appl. Toxicol.* **2018**, *38*, 1215–1223.
- (111) Ewing, L. E.; Skinner, C. M.; Quick, C. M.; Kennon-McGill, S.; McGill, M. R.; Walker, L. A.; ElSohly, M. A.; Gurley, B. J.; Koturbash, I. Hepatotoxicity of a Cannabidiol-Rich Cannabis Extract in the Mouse Model. *Molecules* **2019**, *24*, 1694.
- (112) Russo, C.; Ferk, F.; Mišák, M.; Ropek, N.; Nersesyan, A.; Mejri, D.; Holzmann, K.; Lavorgna, M.; Isidori, M.; Knasmüller, S. Low Doses of Widely Consumed Cannabinoids (Cannabidiol and Cannabidiolvarin) Cause DNA Damage and Chromosomal Aberrations in Human-Derived Cells. *Arch. Toxicol.* **2019**, *93*, 179–188.
- (113) Devinsky, O.; Patel, A. D.; Cross, J. H.; Villanueva, V.; Wirrell, E. C.; Privitera, M.; Greenwood, S. M.; Roberts, C.; Checketts, D.; VanLandingham, K. E.; Zuberi, S. M. GWPCARE3 Study Group. Effect of Cannabidiol on Drop Seizures in the Lennox-Gastaut Syndrome. *N. Engl. J. Med.* **2018**, *378*, 1888–1897.
- (114) Gaston, T. E.; Bebin, E. M.; Cutter, G. R.; Liu, Y.; Szaflarski, J. P. UAB CBD Program. Interactions between Cannabidiol and Commonly Used Antiepileptic Drugs. *Epilepsia* **2017**, *58*, 1586–1592.
- (115) Groeneweld, G. J.; Martin, J. H. Parasitic Pharmacology: A Plausible Mechanism of Action for Cannabidiol. *Br. J. Clin. Pharmacol.* **2020**, *86*, 189–191.
- (116) American Epilepsy Foundation. AES Position Statement on Cannabis as a Treatment for Patients with Epileptic Seizures; American Epilepsy Foundation, 2019. [https://www.aesnet.org/sites/default/files/file\\_attach/42981132\\_cannabis\\_position\\_statement\\_updated\\_2.19.19.pdf](https://www.aesnet.org/sites/default/files/file_attach/42981132_cannabis_position_statement_updated_2.19.19.pdf) (accessed Dec 19, 2019).
- (117) MacKeen, D. What Are the Benefits of CBD? *N. Y. Times* **2019** (October 16).
- (118) Popejoy, S. Is CBD for Aging a Potential Fountain of Youth? *CBGenius*. <https://www.cbgenius.net/2019/06/18/is-cbd-for-aging-a-potential-fountain-of-youth/> (accessed Jul 4, 2020).
- (119) Freeman, J. Does CBD Oil Really Help Treat Arthritis Pain? *Rheumatoid Arthritis*. <https://www.rheumatoidarthritis.org/cbd-oil/> (accessed Jul. 4, 2020).
- (120) Skrobin, N., The Fresh Toast. Cannabis: Optimal Treatment Method for Post-Concussion Syndrome Symptoms. *Chicago Tribune* **2019** (August 30).
- (121) Johnson, J. CBD for Weight Loss: Does It Work? <https://www.medicalnewstoday.com/articles/324733> (accessed Jul 4, 2020).
- (122) Kubala, J.. 7 Benefits and Uses of CBD Oil (Plus Side Effects). <https://www.healthline.com/nutrition/cbd-oil-benefits> (accessed Jul 4, 2020).
- (123) Bonaccorso, S.; Ricciardi, A.; Zangani, C.; Chiappini, S.; Schifano, F. Cannabidiol (CBD) Use in Psychiatric Disorders: A Systematic Review. *NeuroToxicology* **2019**, *74*, 282–298.
- (124) Hiemstra, B.; Keus, F.; Wetterslev, J.; Glud, C.; van der Horst, I. C. C. DEBATE-Statistical Analysis Plans for Observational Studies. *BMC Med. Res. Methodol.* **2019**, *19* (1), 233.
- (125) The Skyline Agency. CBD Oil & Cannabinol Tincture Products from Medterra CBD. <https://medterracbd.com/product-cbd-oil-tincture> (accessed Jul 7, 2020).
- (126) Moerman, D. E.; Jonas, W. B. Deconstructing the Placebo Effect and Finding the Meaning Response. *Ann. Intern. Med.* **2002**, *136*, 471–476.
- (127) Benedetti, F. Placebo Effects: From the Neurobiological Paradigm to Translational Implications. *Neuron* **2014**, *84*, 623–637.
- (128) Hopp, C. Past and Future Research at National Center for Complementary and Integrative Health with Respect to Botanicals. *HerbalGram* **2015**, *107*, 44–51.
- (129) Geller, S. E.; Shulman, L. P.; van Breemen, R. B.; Banuvar, S.; Zhou, Y.; Epstein, G.; Hedayat, S.; Nikolic, D.; Krause, E. C.; Piersen, C. E.; Bolton, J. L.; Pauli, G. F.; Farnsworth, N. R. Safety and Efficacy of Black Cohosh and Red Clover for the Management of Vasomotor Symptoms: A Randomized Controlled Trial. *Menopause* **2009**, *16*, 1156–1166.

(130) Sorkin, B. C.; Kuszak, A. J.; Bloss, G.; Fukagawa, N. K.; Hoffman, F. A.; Jafari, M.; Barrett, B.; Brown, P. N.; Bushman, F. D.; Casper, S. J.; Chilton, F. H.; Coffey, C. S.; Ferruzzi, M. G.; Hopp, D. C.; Kiely, M.; Lakens, D.; MacMillan, J. B.; Meltzer, D. O.; Pahor, M.; Paul, J.; Pritchett-Corning, K.; Quinney, S. K.; Rehermann, B.; Setchell, K. D. R.; Sipes, N. S.; Stephens, J. M.; Taylor, D. L.; Tiriack, H.; Walters, M. A.; Xi, D.; Zappala, G.; Pauli, G. F. Improving Natural Product Research Translation: From Source to Clinical Trial. *FASEB J.* **2020**, *34*, 41–65.

(131) Brown, J. D. Cannabidiol as Prophylaxis for SARS-CoV-2 and COVID-19? Unfounded Claims versus Potential Risks of Medications during the Pandemic. *Res. Social Adm. Pharm.* **2020**, DOI: [10.1016/j.sapharm.2020.03.020](https://doi.org/10.1016/j.sapharm.2020.03.020).